

FY 2024  
Jomon Prehistoric Sites in Northern Japan  
Annual Monitoring Report

March 2026  
Headquarters for World Heritage Jomon Prehistoric Sites

## Introduction

Monitoring the condition of the property based on specific key indicators is important for measuring and assessing the state of conservation of the property. In case that monitoring results have identified ascertained or potential negative impact on the property and/or buffer zone, it is necessary to develop and implement measures to remove their causes in the early stage and/or reduce the negative impact.

Hokkaido, Aomori, Iwate, and Akita Prefectures, as well as the local governments of the specific places where the individual component parts are located, work together to monitor the 17 component parts of the property to make sure that the Outstanding Universal Value of the Jomon Prehistoric Sites in Northern Japan is protected and passed on to future generations in accordance with the Comprehensive Preservation and Management Plan for Jomon Prehistoric Sites in Northern Japan (hereinafter referred to as “Comprehensive Preservation and Management Plan” ), which was adopted on 20 December 2019, and revised on May 2022.

Based on the indicators set out in the Comprehensive Preservation and Management Plan, the 17 component parts of the Jomon Prehistoric Sites in Northern Japan are being observed under a unified approach.

This annual report consolidates the results of monitoring the individual component parts from 1 April 2024 to 31 March 2025 and summarizes the state of protection and conservation of the property and its surroundings, the state of transmission of the Outstanding Universal Value of the property, based on the monitoring results based on the key indicators.

## Contents

- 1 Basic Information of Jomon Prehistoric Sites in Northern Japan
- 2 Policies and Structure of Monitoring
  - 2.1 Policies
  - 2.2 Monitoring structure
- 3 Results of Monitoring
  - 3.1 Monitoring indicators concerning the property’s OUV, integrity, and authenticity
  - 3.2 Monitoring indicators concerning the protection and management of the component parts
  - 3.3 Monitoring indicators concerning the factors that affect the property
  - 3.4 Monitoring indicators concerning the transmission of the OUV
- 4 Special note in FY2024
- 5 Summary

## 1 Basic Information of Jomon Prehistoric Sites in Northern Japan

The Jomon Prehistoric Sites in Northern Japan (hereinafter referred to as “the property”) consist of 17 component parts, which are located in the southwestern part of Hokkaido Island and, across the Tsugaru Strait, in the northern part of Honshu Island of the Japanese archipelago. The geographical coordinates of the individual component parts are given in Table 1-1 and Figure 1-1.

Property: 141.9ha  
 Buffer Zone: 984.8ha  
 Total: 1,126.7ha

Table 1-1 Names, regions, and coordinates of component parts

ID No.	Name of component part	Location	Category under the World Heritage Convention	Category under the Law for the Protection of Cultural Properties	Coordinates of central point	Area of property (ha)	Area of buffer zone (ha)
001	Odai Yamamoto Site	Sotogahama Town, Aomori Prefecture	Site	Historic Site	N41°03'56" E140°33'08"	0.7	49.1
002	Kakinoshima Site	Hakodate City, Hokkaido Prefecture	Site	Historic Site	N41°55'45" E140°56'54"	7.6	53.5
003	Kitakogane Site	Date City, Hokkaido Prefecture	Site	Historic Site	N42°24'08" E140°54'42"	14.4	32
004	Tagoyano Site	Tsugaru City, Aomori Prefecture	Site	Historic Site	N40°53'16" E140°20'16"	6.3	261.5*1
005	Futatsumori Site	Shichinohe Town, Aomori Prefecture	Site	Historic Site	N40°44'55" E141°13'45"	4.3	41.9
006	Sannai Maruyama Site	Aomori City, Aomori Prefecture	Site	Special Historic Site	N40°48'37" E140°41'56"	23.5	69.7
007	Ofune Site	Hakodate City, Hokkaido Prefecture	Site	Historic Site	N41°57'27" E140°55'30"	3.5	18.3
008	Goshono Site	Ichinohe Town, Iwate Prefecture	Site	Historic Site	N40°11'53" E141°18'21"	5.5	65.5
009	Irie Site	Toyako Town, Hokkaido Prefecture	Site	Historic Site	N42°32'34" E140°46'31"	2.4	34.0*2
010	Komakino Stone Circle	Aomori City, Aomori Prefecture	Site	Historic Site	N40°44'15" E140°43'40"	8.8	26.9
011	Isedotai Stone Circles	Kitaakita City, Akita Prefecture	Site	Historic Site	N40°12'11" E140°20'48"	15.6	108.8
012	Oyu Stone Circles	Kazuno City, Akita Prefecture	Site	Special Historic Site	N40°16'17" E140°48'16"	15.7	37
013	Kiusu Earthwork Burial Circles	Chitose City, Hokkaido Prefecture	Site	Historic Site	N42°53'12" E141°43'00"	10.9	22.9
014	Omori Katsuyama Stone Circle	Hirosaki City, Aomori Prefecture	Site	Historic Site	N40°41'56" E140°21'30"	8.5	115.3
015	Takasago Burial Site	Toyako Town, Hokkaido Prefecture	Site	Historic Site	N42°32'48" E140°46'11"	2.8	34.0*2
016	Kamegaoka Burial Site	Tsugaru City, Aomori Prefecture	Site	Historic Site	N40°53'02" E140°20'12"	10.1	261.5*1
017	Korekawa Site	Hachinohe City, Aomori Prefecture	Site	Historic Site	N40°28'25" E141°29'27"	1.3	48.4

Note 1: 004 Tagoyano Site and 016 Kamegaoka Burial Site are surrounded by an integral buffer zone.

Note 2: 009 Irie Site and 015 Takasago Burial Site are surrounded by an integral buffer zone.

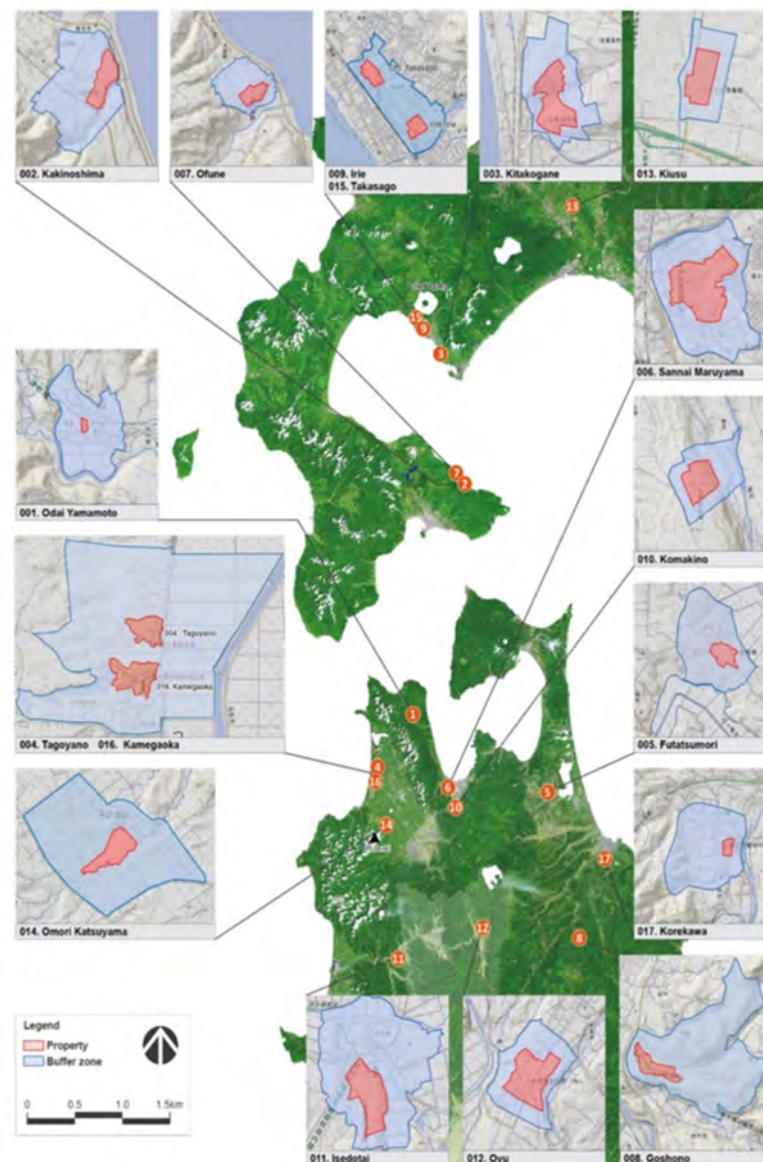


Figure 1-1 Map indicating the extent of the nominated serial property and buffer zone

## 2 Policies and Structure of Monitoring

### 2.1 Policies

For protecting and conserving the Outstanding Universal Value of the property, the appropriate monitoring indicators have been identified based on the following three perspectives for various conditions affecting the property and buffer zone. Based on these indicators, monitoring is to be carried out periodically in a systematic manner.

- (1) If the Outstanding Universal Value of the property is maintained together with integrity and authenticity;
- (2) What impact factors that can affect the state of conservation of the property (development, environmental change, natural disaster, and tourism) have or had on the property, buffer zone and wider setting; and
- (3) If the property, buffer zone, and wider setting surrounding them are mutually linked to be able to function as the appropriate place to transmit the knowledge about the Outstanding Universal Value as a World Heritage property.

### 2.2 Monitoring Structure

Under the guidance of the Agency for Cultural Affairs, the local governments in charge of the individual component parts carry out the monitoring activities in cooperation with Hokkaido, Aomori, Iwate, and Akita Prefectures, depending on which prefecture the local governments are located in (Figure 2-1, Table 2-1).

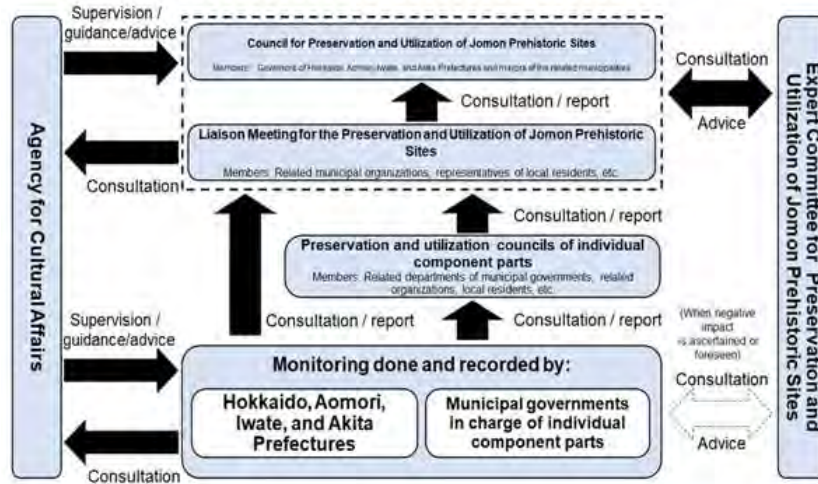


Figure 2-1 Monitoring Structure in fiscal year 2023

Table 2-1 Monitoring system

Responsibilities	Area	Organizations in charge
Organizations and departments in charge	Property and buffer zone	Organizations and representatives
		Hakodate City Mayor
		Chitose City Mayor
		Date City Mayor
		Toyako Town Mayor
		Aomori Prefecture Governor
		Aomori City Mayor
		Hirosaki City Mayor
		Hachinohe City Mayor
		Tsugaru City Mayor
		Sotogahama Town Mayor
		Shichinohe Town Mayor
		Ichinohe Town Mayor
Kazuno City Mayor		
Kitaakita City Mayor		
Organizations and departments in charge	Property and buffer zone	Departments in charge and officers in charge
		Hakodate City Director Manager, Cultural Property Division, Lifelong Learning Department, Board of Education
		Chitose City Director, Archaeological Center, Chitose City, Board of Education
		Date City Director, Date City Institute of Funkawan Culture, Board of Education
		Toyako Town Director Manager, Social Education Division, Board of Education
		Aomori Prefecture Director, Sannai Maruyama Jomon Culture Center
		Aomori City Director Manager, Cultural Heritage Division, Board of Education
		Hirosaki City Director Manager, Cultural Property Division, Board of Education
		Hachinohe City Deputy Director, Korekawa Archaeological Institution Korekawa Jomon Kan
		Tsugaru City Director Manager, Social Educational Cultural Division, Board of Education
		Sotogahama, Town Director Manager, Social Educational Division, Board of Education
		Shichinohe Town Director, World Heritage Office, Board of Education
		Ichinohe Town Director, Goshono Jomon Museum, Board of Education
Kazuno City Director Manager, Oya Stone Circle Museum		
Kitaakita City Director Manager, Lifelong Learning Division, Board of Education		
Supervising organization	Property and buffer zone	Organization and representative Commissioner, Agency for Cultural Affairs
		Department in charge and responsible person Director Manager, Cultural Resource Utilization Division
Advisory organization	Property and buffer zone	Organizations and representatives
		Hokkaido Prefecture Governor
		Aomori Prefecture Governor
		Iwate Prefecture Governor
		Akita Prefecture Governor
		Departments in charge and officers in charge
		Hokkaido Prefecture Manager, Jomon World Heritage Promotion Office, Culture Promotion Division, Bureau of Culture, Department of Environment and Lifestyle
		Hokkaido Prefecture Manager, Cultural Asset/Museum Department, Lifelong Learning Promotion Office, Hokkaido Board of Education
		Aomori Prefecture Manager, World Cultural Heritage Registration Promotion Office in Aomori Prefecture
		Aomori Prefecture Manager, Cultural Property Protection Division, Agency of Education of Aomori Prefecture
		Iwate Prefecture Director Manager, Cultural Promotion Division, Culture and Sports Department, Iwate Prefecture
		Iwate Prefecture Director Manager, Cultural Asset Division/World Heritage Registration Promotion Office, Lifelong Learning Department, Iwate Education Board
		Akita Prefecture Director, Cultural Assets Preservation Office, Lifelong Learning Division, Agency of Education of Akita Prefecture

### 3 Results of Monitoring

#### 3.1 Monitoring indicators concerning the property's OUV, integrity, and authenticity

Item	Indicator	Content and method of measurement	Note
I. Protection and management of the attributes that convey the OUV	I-1. Attribute (a) Demonstrating a lifestyle characterized by managed use of natural resources.	To check and record the state of conservation of archaeological remains and artifacts (from II-2 to II-8, II-10 to 13, IV-1, V-2).	There is no negative effect on attribute (a).
		To check the condition of the vegetation in the component parts and surrounding area and its state of management (II-9, IV-2).	
		To check the views from the component parts to the surrounding area (II-15, from III-1 to 5, IV-2).	
	I-2. Attribute (b) Demonstrating complex spirituality, as evident in rituals and ceremonies.	To check and record the state of conservation of archaeological remains and artifacts (from II-2 to II-8, II-10 to 13, II-12, IV-1, V-2).	There is no negative effect on attribute (b).
		To check the views from the component parts to the surrounding area (II-15, from III-1 to III-5, IV-2).	
	I-3. Attribute (c) Demonstrating diverse relations between the settlement locations and livelihood.	To check the views from the component parts to the surrounding area and the views of the component parts from the surrounding area (II-15, from III-1 to III-5, IV-2).	There is no negative effect on attribute (c).
		To check and record collapse or deformation of the land form of the component parts' locations (II-10, V-2, VI-1, VI-2).	
		To check the condition of the vegetation in the component parts and surrounding area and its state of management (II-9, IV-2).	
		To check visually disturbing factors in the surrounding area of the component parts and the state improvement or change in landscape (II-15, from III-1 to III-5).	
	I-4. Attribute (d) Demonstrating the transition of the form of settlements.	To check and record the state of conservation of archaeological remains and artifacts (from II-2 to II-8, from II-10 to 13, IV-1, V-2).	There is no negative effect on attribute (d).
		To check the views from the component parts to the surrounding area (II-15, from III-1 to III-5, IV-2).	
		To check the basic information for countermeasures to address damage etc. (II-1-4, 11, 14, III-4, IV-1, V-1, VI-1 and 2).	

3.2 Monitoring indicators concerning the protection and management of the component parts

Item	Indicator	Result in FY 2019		Result in FY 2020		Result in FY 2021		Result in FY 2022		Result in FY 2023		Result in FY 2024		Note in FY2024	
II. State of conservation of the property and the protection and management of the property	II-1. Number of meetings of the Jomon Sites World Heritage Preservation and Utilization Council etc.	To count the number of meetings of the Council for Preservation and Utilization, Liaison Meeting, and Expert Committee, at which information is shared and views are exchanged.		1	1	1	4	4	5						Liaison Meeting for the Preservation and Utilization of the World Heritage Jomon Prehistoric Sites (5 August 2024, 18 October 2024, 26 February 2025), Jomon Prehistoric sites World Heritage Expert Committee (7 November 2024, 13 March 2025).
	II-2. Number of cases of alteration of the existing state in the component parts	To record the number and content of applications and notifications for alteration of the existing state of Historic Sites under the Law for the Protection of Cultural Properties.		29	28	39	45	34	41						Refer to Table 1.
	II-3. Number of cases of damage in the component parts	To record the number and details of reports of damage to Historic Sites under the Law for the Protection of Cultural Properties.		1	2	2	5	2	3						Refer to Table 2.
	II-4. Number of cases of Heritage Impact Assessment	To keep track of the number of heritage impact assessments carried out for Historic Site maintenance and repair when damaged.		0	4	9	32	40	44						Refer to Table 3. *The Heritage Impact Assessment became fully operational from April 2022.
	II-5. Ratio of public land in component parts	To check the progress in purchasing the ownership of private land.		—	—	—	—	—	—						Refer to Table 4.
	II-6. Status of archaeological remains	To record the condition of archaeological remains by observation and photography.		—	—	—	—	—	—						See annual report for each component part. No major changes have occurred.
	II-7. Change in air temperature, humidity, and precipitation over time	To make a continual observation of the air and check change in air temperature, humidity, and precipitation.	Annual average temperature	— °C	Annual average temperature	— °C	Annual average temperature	— °C	Annual average temperature	— °C	Annual average temperature	— °C	Annual average temperature	— °C	See annual report for each component part. No major changes have occurred.
			Humidity	— %	Humidity	— %	Humidity	— %	Humidity	— %	Humidity	— %	Humidity	— %	
			Annual precipitation	— mm	Annual precipitation	— mm	Annual precipitation	— mm	Annual precipitation	— mm	Annual precipitation	— mm	Annual precipitation	— mm	
	II-8. Groundwater level	To monitor the quality and quantity of water in low wetland.		—	—	—	—	—	—						See annual report for each component part. No major changes have occurred.
	II-9. Status of the vegetation	To check the condition of the vegetation by observation and photography.		—	—	—	—	—	—						See annual report for each component part. No major changes have occurred.
	II-10. Post-disaster damage	To check damage to the component parts in case a disaster occurs, such as storm, flood, landslide, and earthquake.		No damage	No damage	No damage	1 component part with damage / 16 component parts without damage	1 component part with 2 damages / 16 component parts without damage	No damage						See annual report for each component part. No major changes have occurred.
	II-11. Number of meetings of the Preservation and Utilization Council for each component part	To count the number of meetings of the Historic Site improvement committees or preservation and utilization councils centering on municipalities in charge of component parts.		39	35	32	43	44	44						Refer to Table 5.
	II-12. Study and research of the property	To check the status and details of study and research of the property as well as the number of published reports containing the research outcomes		10	19	17	17	22	26						Refer to Table 6.
	II-13. Study and research of associated cultural properties	To check the status and details of study and research that have been made about cultural properties associated with the property as well as the number of published reports containing the research outcomes.		7	6	5	4	8	2						Refer to Table 7.
II-14. Strengthening of capacities for study and research	To count the number of professionals conducting study and research of the component parts.		60	63	64	64	66	66						Refer to Table 8.	
II-15. Status of removal etc. of non-compliant structures	To identify the status of removal etc. of non-compliant structures existing in component parts.		—	—	—	11 yes/6 no	11 yes/6 no	11 yes/6 no						See annual report for each component part.	

3.3 Monitoring indicators concerning the factors that affect the property

Item	Indicator	Result in FY 2019		Result in FY 2020		Result in FY 2021		Result in FY 2022		Result in FY 2023		Result in FY 2024		Note		
III. Development pressure	III-1. Number of contracts of public works	To count the number of contracts that have been made for public works in the buffer zone, such as road, flood prevention works at the river, and erosion control in the mountain.		14		10		12		7		8		12	Refer to Table 9.	
	III-2. Number of development projects in the private sector	To count the number of development permission application submissions and building confirmation requests in the buffer zone.		Number of development permission applications: 20 Number of building confirmation requests: 0		Number of development permission applications: 14 Number of building confirmation requests: 1		Number of development permission applications: 24 Number of building confirmation requests: 2		Number of development permission applications: 60 Number of building confirmation requests: 3		Number of development permission applications: 21 Number of building confirmation requests: 4		Number of development permission applications: 40 Number of building confirmation requests: 1		Refer to Tables 10 and 11.
	III-3. Number of prior notification submission under the Landscape Ordinance	To count the number of prior notifications that are submitted in accordance with the Landscape Ordinance.		Number of prior notifications: 1 Number of prior consultations: 1		Number of prior notifications: 6 Number of prior consultations: 6		Number of prior notifications: 5 Number of prior consultations: 3		Number of prior notifications: 7 Number of prior consultations: 3		Number of prior notifications: 16 Number of prior consultations: 8		Number of prior notifications: 4 Number of prior consultations: 2		Refer to Tables 12 and 13.
	III-4. Number of conducted cases of heritage impact assessments	To identify the number of heritage impact assessments conducted for development activities, etc.		0		12		27		40		55		46		Refer to Table 14. *A trial operation of the heritage impact assessment started on 1 April 2020.
	III-5. Observation of views to and from the component parts	To identify visually disturbing elements in the views from the fixed observation points.		-		-		-		-		-		-		Refer to the annual report of each component part. No major changes have occurred.
IV. Environmental change	IV-1. Achievement of environmental standards related to air pollution (sulfur dioxide and nitrogen dioxide)	Sulfur dioxide		Sulfur dioxide		Sulfur dioxide		Sulfur dioxide		Sulfur dioxide		Sulfur dioxide		There are no places that environmental standards have been exceeded.  N.B., Environmental standard for sulfur dioxide: must not exceed 0.04 ppm Environmental standard for nitrogen dioxide: must not exceed 0.06 ppm		
		Annual average	0.000~0.002ppm	Annual average	0.000~0.001 ppm	Annual average	0.000~0.002 ppm	Annual average	0.000~0.002 ppm	Annual average	0.000~0.001 ppm	Annual average	0.000~0.001 ppm			
		Annual 98th percentile (exclusive) of daily average	0.001~0.009ppm	Annual 98th percentile (exclusive) of daily average	0.001~0.009 ppm	Annual 98th percentile (exclusive) of daily average	0.001~0.006 ppm	Annual 98th percentile (exclusive) of daily average	0.001~0.006 ppm	Annual 98th percentile (exclusive) of daily average	0.001~0.003 ppm	Annual 98th percentile (exclusive) of daily average	0.001~0.003 ppm			
		Compliance with environmental standards	Yes	Compliance with environmental standards	Yes	Compliance with environmental standards	Yes	Compliance with environmental standards	Yes	Compliance with environmental standards	Yes	Compliance with environmental standards	Yes			
	Nitrogen dioxide		Nitrogen dioxide		Nitrogen dioxide		Nitrogen dioxide		Nitrogen dioxide		Nitrogen dioxide		Nitrogen dioxide			
	Annual average	0.002~0.008ppm	Annual average	0.002~0.010 ppm	Annual average	0.002~0.010 ppm	Annual average	0.002~0.010 ppm	Annual average	0.002~0.010 ppm	Annual average	0.001~0.007 ppm	Annual average		0.001~0.007 ppm	
Annual 98th percentile (exclusive) of daily average	0.0016~0.023ppm	Annual 98th percentile (exclusive) of daily average	0.008~0.028 ppm	Annual 98th percentile (exclusive) of daily average	0.008~0.027 ppm	Annual 98th percentile (exclusive) of daily average	0.008~0.027 ppm	Annual 98th percentile (exclusive) of daily average	0.008~0.027 ppm	Annual 98th percentile (exclusive) of daily average	0.006~0.027 ppm	Annual 98th percentile (exclusive) of daily average	0.006~0.027 ppm			
Compliance with environmental standard	Yes	Compliance with environmental standard	Yes	Compliance with environmental standard	Yes	Compliance with environmental standard	Yes	Compliance with environmental standard	Yes	Compliance with environmental standard	Yes	Compliance with environmental standard	Yes			
IV-2. Vegetation status	To check the state of excessive growth of plants in the surrounding area of the property by observation and photography.		-		-		-		-		-		-		Refer to the annual report of each component part. No major changes have occurred.	
V. Natural disasters	V-1. Observation of disaster related information	To check the occurrence of disasters due to weather, earthquake, tsunami, and volcanic activity.		0		3		8		19		0		1	Refer to the annual report of each component part.	
	V-2. State of the archaeological remains at the time of a disaster	To check the damage caused by storm and flood damage, landslide disaster, earthquake, etc., in and around the component parts.		No damage		No damage		No damage		3 component parts with damage / 14 component parts without damage		1 component part with damage / 16 component parts without damage		No damage		See annual report for each component part.
VI. Tourism pressure	VI-1. Number of visitors	To count the number of visitors to the component parts.		Number of visitors to component parts: 289,532		Number of visitors to component parts: 145,676		Number of visitors to component parts: 275,528		Number of visitors to component parts: 424,527		Number of visitors to component parts: 431,305		Number of visitors to component parts: 410,689		Refer to Tables 15 and 16.
		Number of visitors to interpretation facilities: 329,223		Number of visitors to interpretation facilities: 167,467		Number of visitors to interpretation facilities: 268,960		Number of visitors to interpretation facilities: 404,598		Number of visitors to interpretation facilities: 434,893		Number of visitors to interpretation facilities: 419,985				
	VI-2. Number of motor vehicles	To count the situation of motor vehicles that have used the parking lots in the surrounding area of the component parts.		No impact		No impact		No impact		No impact		No impact		No impact		Refer to Tables 17 and 18.
	VI-3. State of installation of convenience facilities	To check the state of facilities etc. that have been installed at the component parts for the convenience of visitors.		-		-		-		-		-		-		Refer to Tables 19 and 20.

3.4 Monitoring indicators concerning the transmission of the Outstanding Universal Value

Item	Indicator		Result in FY 2019	Result in FY 2020	Result in FY 2021	Result in FY 2022	Result in FY 2023	Result in FY 2024	Note	
VII. Transmission of the Outstanding Universal Value	VII-1. Number of participants in workshops etc. about the property	To count the number of participants in workshops, seminars, etc. which are organized about the property.	53,789	193,279	119,321	191,926	202,311	332,159	Refer to Table 21.	
	VII-2. Establishment of interpretation facilities	To identify situations of establishment of interpretation facilities	—	—	—	—	—	—	Refer to Table 22.	
	VII-3. Information provision through pamphlets and websites	To count the number of times and the state of information provision through published pamphlets and websites of the local governments.	Number of publications of pamphlets etc. (times)	26	31	50	50	45	57	Refer to Tables 23 and 24.
			Number of pamphlets and other publications	491,246	262,871	972,241	795,991	758,125	454,120	
			Number of website updates (times)	26	31	756	3,980	4,356	4,150	
			Number of accesses to the website	1,006,120	Over 873,732	1,883,249	2,802,586	3,549,575	2,690,375	
VIII. Activities of local people and civic groups	VIII-1. Number of activities related to the property by local people and civic groups	To count the number of activities at the component parts in which local people, civic group, etc. have participated and the number of participants.	124,958	89,035	67,184	95,326	101,582	99,853	Refer to Table 26.	

Table 1 Number of alterations to the existing state at each component part (related with Indicator II-2)

	Name of the component part	FY 2019	FY 2020	FY 2021	FY 2022	FY 2023	FY 2024	FY 2024 Note
001	Odai Yamamoto Site	1	1	1	1	0	0	
002	Kakinoshima Site	2	1	4	1	2	0	
003	Kitakogane Site	2	1	0	0	0	0	
004	Tagoyano Site	5	2	5	7	3	5	Installation of pedestrian mats, installation of prefabricated toilets for archaeological excavation, topographic surveying, tree location surveying, and installation of informational signs
005	Futatsumori Site	0	0	0	1	0	2	Demolition of two houses as part of the Historic Site Acquisition Program
006	Sannai Maruyama Site	7	6	10	9	11	10	Two projects for the removal of trees; maintenance of Historic Site (two pedestrian paths renovations, installation of a shelter over a child's grave, renovation of a large pit-dwelling, installation of water supply and drainage systems, and repair of drainage pipes at the archaeological remains of a large pillar-supported structure); installation of outdoor exhibits; dismantling and reassembly of Reconstructed Pit-Dwelling No. 345; environmental survey of the area surrounding the child's grave
007	Ofune Site	4	6	1	1	0	0	
008	Goshono Site	1	0	0	1	2	4	Installation of four temporary structures (tents, platforms, etc.) in connection with the event
009	Irie Site	1	1	1	1	0	0	
010	Komakino Stone Circle	0	0	1	0	0	2	Two removals of trees
011	Isedotai Stone Circles	1	1	0	0	2	2	Maintenance of pedestrian paths; replacement of pedestrian path sleepers
012	Oyu Stone Circles	1	1	2	2	3	2	Restoration of a slope damaged in a traffic accident on a prefectural road; installation of an electric fence for the management of a Historic Site
013	Kiusu Earthwork Burial Circles	0	0	3	3	0	1	Kiusu Earthwork Burial Circles Historic Site Preservation Project (Construction of Pedestrian Paths, Service Roads, etc.)
014	Omori Katsuyama Stone Circle	3	4	3	4	2	2	Installation of temporary restrooms for visitors and prefabricated structures for guides to wait in, as well as temporary observation decks, tents, and other facilities for public events
015	Takasago Burial Site	0	0	0	0	0	0	
016	Kamegaoka Burial Site	0	2	6	5	8	9	Installation of pedestrian mats, installation of prefabricated toilets for archaeological excavation, surveying of tree locations, installation of informational signs, demolition of a community center, demolition of residential buildings (3 houses), topographic surveying
017	Korekawa Site	1	2	2	3	1	2	Historic Site Restoration Project (landscaping, etc.), Relocation of utility poles
Total		29	28	39	39	34	41	

Table 2 Number of damage-causing incidents within the each component part (related with Indicator II-3)

	Name of the component part	FY 2019	FY 2020	FY 2021	FY 2022	FY 2023	FY 2024	FY 2024 Note
001	Odai Yamamoto Site	0	0	0	0	0	0	
002	Kakinoshima Site	0	0	0	0	0	0	
003	Kitakogane Site	0	0	0	0	0	0	
004	Tagoyano Site	0	0	0	0	0	0	
005	Futatsumori Site	0	0	0	0	0	0	
006	Sannai Maruyama Site	0	1	0	1	0	0	
007	Ofune Site	0	0	0	0	0	0	
008	Goshono Site	0	0	0	0	0	0	
009	Irie Site	0	0	0	0	0	0	
010	Komakino Stone Circle	1	0	0	0	0	0	
011	Isedotai Stone Circles	0	0	0	1	2	0	
012	Oyu Stone Circles	0	1	2	3	0	2	Damage to one of the columns indicated for reconstruction; damage to one of the five columns in the reconstructed building
013	Kiusu Earthwork Burial Circles	0	0	0	0	0	1	Damage to the existing terrain caused by the fall of a single tree
014	Omori Katsuyama Stone Circle	0	0	0	0	0	0	
015	Takasago Burial Site	0	0	0	0	0	0	
016	Kamegaoka Burial Site	0	0	0	0	0	0	
017	Korekawa Site	0	0	0	0	0	0	
	Total	1	2	2	5	2	3	

Table 3 The state of implementation of heritage impact assessments within the property (related with Indicator II-4)

【Results of the deliberation to decide on whether detailed analysis of the act is required or not】

Name of component part	Location	Outline of the act	Impact	Detailed analysis	Reason for the decision taken	Record-keeping body
Tagoyano Site	Within the property area	Installation of temporary toilets and pre-fabss for use during excavation	Level0	Not necessary	Installation will not involve digging and pre-fab structures are relatively light, thus any influence on underground remains or ground layers with artifacts will be incredibly minimal. The installation is temporary and its influence on the landscape will be limited.	Tsugaru City Board of Education
Tagoyano Site	Within the property area	Topographical survey	Level0	Not necessary	Piles dug into the ground will be only 15cm in length and will not reach ground layers in which artifacts have been confirmed, thus there will be no influence on the site and its components. It will take place along visitor paths, but will be small-scale and have very limited influence on the site's landscape.	Tsugaru City Board of Education
Tagoyano Site	Within the property area	Installation of Information Signs	Level0	Not necessary	Provisional installation as part of the site's development. The installation of signs will have no impact on the components of the site that constitute the site's value. Visitor accessibility will be improved through this installation.	Tsugaru City Board of Education
Tagoyano Site	Within the property area	Tree position survey	Level0	Not necessary	Piles dug into the ground will be only 15cm in length and will not reach ground layers in which artifacts have been confirmed, thus there will be no influence on the site and its components. It will take place along visitor paths, but will be small-scale and have very limited influence on the site's landscape.	Tsugaru City Board of Education
Sannai Maruyama Site	Within the property area	Removal of trees	Level0	Not necessary	Only the above-ground portions of trees at risk of falling will be cut, thus any underground remains or the topography that constitutes the site's OUV will not be physically impacted. Additionally, places where trees will be cut are not visible from vista points, so there will be no negative influence on the site's landscape or appearance.	Sannai Maruyama Jomon Culture Center
Sannai Maruyama Site	Within the property area	Sannai-Maruyama Jomon Spring Festival	Level0	Not necessary	No digging will take place, thus any underground remains or the topography that constitutes the site's OUV will not be physically impacted. Additionally, any change to the site's landscape or appearance will only be temporary.	Sannai Maruyama Jomon Culture Center
Sannai Maruyama Site	Within the property area	Repairs of pedestrian paths	Level0	Not necessary	Repairs of pre-existing pedestrian paths will only involve digging within the boundaries of the paths themselves, and any new paths will be made within the preservation embankment layer, thus any underground remains or the topography that constitutes the site's OUV will not be physically impacted. Though visible from vista points, the materials and colors will be chosen to match the site's appearance and landscape to avoid any negative visual impact. Visitor comfort and safety will be improved through these repairs.	Sannai Maruyama Jomon Culture Center
Sannai Maruyama Site	Within the property area	The 49th archaeological excavation	Level1	Not necessary	There will be very little impact on any underground remains or the topography that constitute the site's OUV, and there will no negative influence on the site's appearance or landscape	Sannai Maruyama Jomon Culture Center
Sannai Maruyama Site	Within the property area	Dismantling and reconstruction of the No. 345 reconstructed pit dwelling	Level0	Not necessary	The dismantling and reconstruction of a damaged pit dwelling. Digging of at most 30cm will take place, but this will be within the site's preservation embankment, thus any underground remains or the topography that constitutes the site's OUV will not be physically impacted. Though visible from site vista points, the reconstructed dwelling will be located in the same spot and be the same size as the previous structure, thus there will be no change in the site's landscape.	Sannai Maruyama Jomon Culture Center
Sannai Maruyama Site	Within the property area	Construction of a New Covered Structure for a Child's Grave		Necessary	This will involve the construction of a new (modern) building within the site, in which remains will be displayed in an open-air environment. It is therefore necessary to conduct detailed surveys to determine the effects this might have on the underground remains and topography that constitute the site's OUV, on the site's appearance and landscapes as seen from vista points, and on visitor peace of mind, safety and comfort.	Sannai Maruyama Jomon Culture Center

Table 3 The state of implementation of heritage impact assessments within the property (related with Indicator II-4)

【Results of the deliberation to decide on whether detailed analysis of the act is required or not】

Name of component part	Location	Outline of the act	Impact	Detailed analysis	Reason for the decision taken	Record-keeping body
Sannai Maruyama Site	Within the property area	Sannai-Maruyama Jomon Summer Festival	Level0	Not necessary	No digging will take place, thus any underground remains or the topography that constitutes the site's OUV will not be physically impacted. Any changes to the site's landscape or appearance will be only temporary.	Sannai Maruyama Jomon Culture Center
Sannai Maruyama Site	Within the property area	Repairs of water pipes around the archaeological remains of a large pillar-supported structure	Level0	Not necessary	Digging will take place within the preservation embankment layer, thus any underground remains or the topography that constitutes the site's OUV will not be physically impacted. The replacement of drainage pipes will stabilize the underground water levels, improving the preservation of the site. The area planned to undergo construction is indoors and will not be visible from vista points, thus it will not affect the site's appearance or landscape.	Sannai Maruyama Jomon Culture Center
Sannai Maruyama Site	Within the property area	Installation of water supply and drainage equipment	Level0	Not necessary	Digging will take place within the preservation embankment layer, thus any underground remains or the topography that constitutes the site's OUV will not be physically impacted. A freeze-proof water spigot will be installed above ground, but it will not be visible from vista points and is designed to blend with the surrounding landscape, thus it will have no negative impact on the site.	Sannai Maruyama Jomon Culture Center
Sannai Maruyama Site	Within the property area	Sanmaru JOMON Day	Level0	Not necessary	No digging will take place, thus any underground remains or the topography that constitutes the site's OUV will not be physically impacted. Any changes to the site's landscape or appearance will be only temporary.	Sannai Maruyama Jomon Culture Center
Sannai Maruyama Site	Within the property area	Jomon Satoyama Planting Experience	Level0	Not necessary	No digging will take place, thus any underground remains or the topography that constitutes the site's OUV will not be physically impacted. Pruning and the felling of exogenous species of trees will take place, but nothing that has a negative influence on the site's appearance or landscape will take place.	Sannai Maruyama Jomon Culture Center
Sannai Maruyama Site	Within the property area	Installation of lighting equipment for Shiki-Shima tourism	Level0	Not necessary	No digging will take place, thus any underground remains or the topography that constitutes the site's OUV will not be physically impacted. Any lighting equipment installed will only be temporary, and will have no influence on the site's long-term appearance or landscape.	Sannai Maruyama Jomon Culture Center
Sannai Maruyama Site	Within the property area	Removal of trees	Level1	Not necessary	Only the above-ground portions of trees will be cut, thus any underground remains or the topography that constitutes the site's OUV will not be physically impacted. Additionally, places where trees will be cut are not visible from vista points, so there will be no negative influence on the site's landscape or appearance.	Sannai Maruyama Jomon Culture Center
Sannai Maruyama Site	Within the property area	Renovation Work on the Large Pit-House (3D Model)		Necessary	This will involve the large-scale reconstruction of a large (structural) pit dwelling within the site. It is therefore necessary to conduct detailed surveys to determine the effects this might have on the underground remains and topography that constitute the site's OUV, on the site's appearance and landscapes as seen from vista points, and on visitor peace of mind, safety and comfort.	Sannai Maruyama Jomon Culture Center
Sannai Maruyama Site	Within the property area	The 50th archaeological excavation	Level1	Not necessary	There will be very little effect on any underground remains or the topography that constitutes the site's OUV, and there will be no negative influence on the site's appearance or landscape.	Sannai Maruyama Jomon Culture Center
Sannai Maruyama Site	Within the property area	Repairs of pedestrian paths	Level0	Not necessary	Repairs of pre-existing pedestrian paths will only involve digging within the boundaries of the paths themselves, and any new paths will be made within the preservation embankment layer, thus any underground remains or the topography that constitutes the site's OUV will not be physically impacted. Though visible from vista points, the materials and colors will be chosen to match the site's appearance and landscape to avoid any negative visual impact. Visitor comfort and safety will be improved through these repairs.	Sannai Maruyama Jomon Culture Center

Table 3 The state of implementation of heritage impact assessments within the property (related with Indicator II-4)

【Results of the deliberation to decide on whether detailed analysis of the act is required or not】

Name of component part	Location	Outline of the act	Impact	Detailed analysis	Reason for the decision taken	Record-keeping body
Goshono Site	Within the property area	Restoration of restored pit building	Level0	Not necessary	Work will be done in order to restore the original state of the site, and site elements will not be impacted. The site's appearance as seen from vista points will also not be influenced.	Ichinohe Town Board of Education
Goshono Site	Within the property area	Installation of temporary structures for Golden Week event	Level0	Not necessary	Structures will be installed in a way that they do not impact the site. The site's appearance will change, but this will be temporary and not have a big impact.	Ichinohe Town Board of Education
Goshono Site	Within the property area	Installation of temporary structures for 3 year anniversary event	Level0	Not necessary	Structures will be installed in a way that they do not impact the site. The site's appearance will change, but this will be temporary and not have a big impact.	Ichinohe Town Board of Education
Goshono Site	Within the property area	Installation of temporary structures for autumn event	Level0	Not necessary	Structures will be installed in a way that they do not impact the site. The site's appearance will change, but this will be temporary and not have a big impact.	Ichinohe Town Board of Education
Goshono Site	Within the property area	Installation of temporary structures for relay marathon	Level0	Not necessary	Structures will be installed in a way that they do not impact the site. The site's appearance will change, but this will be temporary and not have a big impact.	Ichinohe Town Board of Education
Irie Site	Within the property area	14th Toyako Jomon Festival	Level0	Not necessary	The simple tents that will be set up for the event will not affect any underground remains. Thus, it was determined that there will be no influence on the site's OUV.	Toyako Town Board of Education
Komakino Site	Within the property area	Removal of trees	Level1	Not necessary	There will be close to no impact on the site's appearance and landscape.	Aomori City
Komakino Site	Within the property area	Removal of trees	Level1	Not necessary	There will be close to no impact on the site's appearance and landscape.	Aomori City
Isedotai Stone Circles	Within the property area	Isedotai Stone Circles pedestrian path construction	Level1	Necessary	Construction of pedestrian paths within the site. There is a risk that the materials used will influence the site's landscape or that digging will impact the site's remains, thus it was determined that a detailed analysis is necessary.	Kitaakita City
Isedotai Stone Circles	Within the property area	Isedotai Stone Circles preservation survey	Level1	Not necessary	Survey to understand the present state of the stone circles. Data loggers will be placed within the stone circles and earth samples will be taken, thus there will be a slight temporary visual impact on the site. However this will only occur within the data-collection period and there will be no impact on the site, thus this was rated level 1.	Kitaakita City
Oyu Stone Circles	Within the property area	Stone Circle Summer Solstice Festival 2024	Level0	Not necessary	The event is expected to bring 200~300 visitors to the site at once, but the main purpose of the event is to watch the sunset, thus it was determined that there will be no negative impact on the site's OUV.	Kazuno City Board of Education
Oyu Stone Circles	Within the property area	Oyu Stone Circles Jomon Festival	Level0	Not necessary	There will be a temporary visual impact on the site and it is expected that an increased number of visitors will enter the site and its buffer zone, but it was determined this will not have a negative impact on elements that comprise the site's OUV.	Kazuno City Board of Education
Oyu Stone Circles	Within the property area	Removal of electric fencing following t	Level1	Not necessary	Electric fences will be removed, which was determined to have no negative influence on elements constituting the site's OUV.	Kazuno City Board of Education
Oyu Stone Circles	Within the property area	Installation of an electric fence in conj	Level1	Not necessary	Facilities such as electric fences will temporarily influence the site's appearance, but there will be no negative influence on elements constituting the site's OUV.	Kazuno City Board of Education

Table 3 The state of implementation of heritage impact assessments within the property (related with Indicator II-4)

【Results of the deliberation to decide on whether detailed analysis of the act is required or not】

Name of component part	Location	Outline of the act	Impact	Detailed analysis	Reason for the decision taken	Record-keeping body
Omori Katsuyama Site	Within the property area	Installation of temporary toilets, pre-fabss, etc.	Level0	Not necessary	This construction will involve the installation of pre-fabricated buildings as a temporary toilet facility for visitors and as a temporary break room for guides. Pre-fabricated buildings do not have foundations, so there will be no influence on underground remains. They are temporary and will not influence the landscape.	Hirosaki City Board of Education
Omori Katsuyama Site	Within the property area	Installation of temporary observatory and tents for the Omori Katsuyama Jomon Festival	Level0	Not necessary	This construction will involve the installation of provisional equipment for an event. The equipment will not have foundations and there will be no influence on underground remains. Equipment will be placed in locations visible from vista points, but this will only temporarily influence the site's appearance or landscape.	Hirosaki City Board of Education
Kamegaoka Burial Site	Within the property area	Installation of temporary toilets and pre-fabss for use during excavation	Level0	Not necessary	Installation will not involve digging and pre-fab structures are relatively light, thus any influence on underground remains or ground layers with artifacts will be incredibly minimal. The installation is temporary and its influence on the landscape will be limited.	Tsugaru City Board of Education
Kamegaoka Burial Site	Within the property area	Installation of Information Signs	Level0	Not necessary	Provisional installation as part of the site's development. The installation of signs will have no impact on the components of the site that constitute the site's value. Visitor accessibility will be improved through this installation.	Tsugaru City Board of Education
Kamegaoka Burial Site	Within the property area	Tree position survey	Level0	Not necessary	Piles dug into the ground will be only 15cm in length and will not reach ground layers in which artifacts have been confirmed, thus there will be no influence on the site and its components. It will take place along visitor paths, but will be small-scale and have very limited influence on the site's landscape.	Tsugaru City Board of Education
Kamegaoka Burial Site	Within the property area	Installation of event stage	Level0	Not necessary	The stage and other facilities will not be anchored using tools that dig into the ground, so there will be no influence on underground remains or artifacts. The event will provide an opportunity for visitors to learn about the site's OUV.	Tsugaru City Board of Education
Kamegaoka Burial Site	Within the property area	Demolition of residential structures and other buildings in connection with the Historic Site acquisition project	Level0	Not necessary	Removal will only take place within previously excavated areas and will not influence the preservation of remains or artifacts. Additionally, the landscape visible from vista points will be improved due to the removal, allowing visitors to better understand the site's value.	Tsugaru City Board of Education
Kamegaoka Burial Site	Within the property area	Removal of community center	Level0	Not necessary	Removal will only take place within previously excavated areas and will not influence the preservation of remains or artifacts. Additionally, the landscape visible from vista points will be improved due to the removal, allowing visitors to better understand the site's value.	Tsugaru City Board of Education
Kamegaoka Burial Site	Within the property area	Phone line installation Raiden-gu Shrine in connection with the Historic Site acquisition project	Level1	Not necessary	The removal of the community center made it necessary to install new utility poles to connect electricity to Raiden-gu Shrine. This will involve the permanent installation of structures, but no new digging will take place and there will be very little influence on the site's landscape.	Tsugaru City Board of Education
Korekawa Site	Within the property area	Surveys and utility pole removal for the installation of new poles	Level1	Not necessary	This survey will make it possible for future utility pole installations to not damage artifacts or influence underground components.	Korekawa Archaeological Institution

【Case with detailed analysis carried out】

Name of the component part	Location	Outline of the act	Analysis Method	Result of analysis	Reasons for the evaluation	Record-keeping body
Sannai Maruyama Site	Within the property area	Construction of a new covered structure for a Child's Grave	Analysis of impact on land and topography, impact on water sources, water veins, etc., impact on landscape and appearance, and impact on visitors	No negative impact	Any digging will take place within the site's preservation embankment. There will be no influence on the site's land, topography, underground remains or artifacts, nor on water sources, water veins, etc. that contribute to the preservation of underground remains. There will be a change to the site's appearance/landscape, but designs and colors have been chosen to match the Jomon aesthetic. This project will help improve visitor understanding of the site's OUV and the need to preserve it.	Sannai Maruyama Jomon Culture Center
Sannai Maruyama Site	Within the property area	Renovation Work on the Large Pit-House (3D Model)	Analysis of impact on land and topography, impact on water sources, water veins, etc., impact on landscape and appearance, and impact on visitors	No negative impact	The replacement of a thatched-roof that has become damaged throughout the years. There will be no physical impact on any underground remains, the site's topography, water sources, water veins, etc, and there will be no change to the site's appearance or landscape. This project will improve the site's structures, and will help improve visitor understanding of the site's OUV and the need to preserve it.	Sannai Maruyama Jomon Culture Center
Isedotai Stone Circles	Within the property area	Isedotai Stone Circles pedestrian path construction	Discussion between specialists, the Agency for Cultural Affairs, and Akita prefecture	Impact on the site is extremely minimal	This construction will take place on both an elevated area that was raised by Akita Prefecture during excavation surveys, and on an area that is the original ground level. However, it has been confirmed that construction on original ground level areas will have very limited influence on the site's underground remains. Influence on the site's topography, landscape, or appearance as seen from vista points will be kept to a minimum.	Kitaakita City
Kiusu Earthwork Burial Circles	Within the property area	Kiusu Earthwork Burial Circles Site development project (design plan)	Analysis of impact on site components, topography and landscape as based on project's design plan	There is no likelihood that there will be a negative impact on the site's OUV	There will be no negative influence to the site's remains, and influence to the topography and landscape will be small-scale and minimal. Effort will be made to limit site influence and preserve the site's remains.	Chitose City Board of Education

Table 4 Ratio of public land in each component part (related with Indicator II-5)

	Name of the component part	FY 2019	FY 2020	FY 2021	FY 2022	FY 2023	FY 2024	FY 2024 Note
001	Odai Yamamoto Site	71.41%	71.41%	71.41%	71.41%	71.41%	71.41%	
002	Kakinoshima Site	100.00%	100.00%	100.00%	100.00%	100.00%	100.00%	
003	Kitakogane Site	100.00%	100.00%	100.00%	100.00%	100.00%	100.00%	
004	Tagoyano Site	45.00%	67.00%	84.00%	86.00%	86.00%	86.00%	
005	Futatsumori Site	100.00%	100.00%	100.00%	100.00%	100.00%	100.00%	
006	Sannai Maruyama Site	100.00%	100.00%	100.00%	100.00%	100.00%	100.00%	
007	Ofune Site	100.00%	100.00%	100.00%	100.00%	100.00%	100.00%	
008	Goshono Site	100.00%	100.00%	100.00%	100.00%	100.00%	100.00%	
009	Irie Site	100.00%	100.00%	100.00%	100.00%	100.00%	100.00%	
010	Komakino Stone Circle	83.18%	83.18%	83.18%	83.18%	100.00%	100.00%	
011	Isedotai Stone Circles	100.00%	100.00%	100.00%	100.00%	100.00%	100.00%	
012	Oyu Stone Circles	100.00%	100.00%	100.00%	100.00%	100.00%	100.00%	
013	Kiusu Earthwork Burial Circles	50.60%	50.60%	50.60%	50.60%	50.60%	50.60%	
014	Omori Katsuyama Stone Circle	99.80%	99.80%	99.80%	99.80%	99.80%	99.80%	
015	Takasago Burial Site	100.00%	100.00%	100.00%	100.00%	100.00%	100.00%	
016	Kamegaoka Burial Site	42.00%	42.00%	42.00%	43.70%	46.80%	52.10%	
017	Korekawa Site	100.00%	100.00%	100.00%	100.00%	100.00%	100.00%	

Table 5 Number of meetings of the Preservation and Utilization Council for each component part (related with Indicator II-11)

	Name of the component part	FY 2019	FY 2020	FY 2021	FY 2022	FY 2023	FY 2024	FY 2024 Note
001	Odai Yamamoto Site	1	1	1	2	2	1	Council for the World Heritage Site Odai Yamamoto Site (1 April 2024)
002	Kakinoshima Site	4	1	1	2	2	2	Hakodate City Jomon Prehistoric Sites Preservation and Utilisation Council(26 November 2024, 20 February 2025)
003	Kitakogane Site	0	1	0	0	1	0	-
004	Tagoyano Site	0	2	2	4	3	5	Tsugaru City Jomon Site Preservation and Utilization Council (7 October 2024, 3 February 2025),Historic Site Kamegaoka Sekkijidai iseki and Tagoyano Kaizuka Maintenance Advisory Committee(11 September 2024, 17 December 2024, 27 February 2025)
005	Futatsumori Site	9	6	0	0	1	0	-
006	Sannai Maruyama Site	1	7	6	7	6	6	Sannai Maruyama Site Preservation and Utilization Promotion Council (25 March 2025) Sannai Maruyama Site Excavation Advisory Committee(20 August 2024, 8 October 2024, 13 February 2025) Sannai Maruyama Site Historic Site Maintenance Council(11 June 2024, 22 November 2024)
007	Ofune Site	2	1	1	2	2	2	Hakodate City Jomon Prehistoric Sites Preservation and Utilization Council (26 November 2024, 20 February 2025)
008	Goshono Site	1	1	1	5	3	3	Iwate Prefecture Council for the Preservation and Utilization of World Heritage (27 March 2025), Iwate Prefecture Council for the Preservation and Utilization of World Heritage – Jomon Preservation and Utilization Working Group (12 February 2025), Iwate Prefecture Meeting on Coordination between the Three World Heritage Sites (10 February 2025)
009	Irie Site	1	1	1	0	0	1	Irie and Takasago Shell Mound Preservation and Utilisation Council (6 August 2024)
010	Komakino Stone Circle	1	1	1	1	1	1	Aomori City Jomon World Heritage Preservation and Utilization Liaison Council(26 March 2025)
011	Isedotai Stone Circles	1	1	1	1	3	3	Isedotai Iseki Preservation and Utilisation Liaison Council (11 March 2025), Maintenance Advisory Committee for the Isedotai Iseki
012	Oyu Stone Circles	0	0	0	2	3	3	Second Maintenance Advisory Committee for the Special Historic Site of the Oyu Stone Circles (30 July 2024, 23 October 2024, 19 February 2025)
013	Kiusu Earthwork Burial Circles	4	2	5	5	4	2	Kiusu Earthwork Burial Circles Preservation and Utilisation Liaison Council (21 March 2025), Committee for the Improvement and Utilisation of the Kiusu Earthwork Burial Circles Historic Site (27 March 2025)
014	Omori Katsuyama Stone Circle	9	4	7	6	7	6	Omori Katsuyama Historic Site Preservation and Utilisation Council (2 June 2024, 21 July 2024, 29 November 2024, 22 March 2025), Historic Site Omori Katsuyama Iseki Maintenance Advisory Committee (24 December 2024, 18 March 2025)
015	Takasago Burial Site	1	1	1	0	0	1	Irie and Takasago Shell Mound Preservation and Utilisation Council (6 August 2024)
016	Kamegaoka Burial Site	0	2	2	4	3	5	Tsugaru City Jomon Site Preservation and Utilization Council (7 October 2024, 3 February 2025),Historic Site Kamegaoka Sekkijidai iseki and Tagoyano Kaizuka Maintenance Advisory Committee(11 September 2024, 17 December 2024, 27 February 2025)
017	Korekawa Site	4	3	2	2	3	3	Hachinohe City Korekawa Sekkijidai Iseki Preservation and Utilisation Liaison Committee (21 March 2025); Hachinohe City Korekawa Sekkijidai Iseki Maintenance Advisory Committee (11 October 2024, 26 December 2024)
	Total	39	35	32	43	44	44	

Table 6 Study and research of the property (related with Indicator II-12)  
 [Status of implementation of study and research]

Content of study and research	Responsible organization	Duration of activity	Summary	Availability of Attached Documents	Funding etc.
2024 Survey of Visitor Trends at Jomon Prehistoric Sites in Northern Japan	Headquarters for World Heritage Jomon Prehistoric Sites	September 2024 – October 2024	A survey about visitor movement and visitor satisfaction held at the 17 component sites of the Jomon Prehistoric Sites in Northern Japan.	No	No
"Study of the Spread of Polished Greenstone Axe-Making Technology in the Southern Hokkaido and Northern Tohoku Regions"	Hakodate Jomon Culture Center (Akita Prefecture Buried Cultural Properties Center)	September 2024 – March 2025	Analyzing and bringing to light the characteristics, use and spread of polished greenstone axes in the Jomon period, with a focus on artifacts from the Hakodate City area.	Yes	No
Site Excavation	Tsugaru City Board of Education	April 2024 – June 2024	A survey to check the site's contemporary embankment thickness in preparation for site development plans.	No	Subsidy for Preservation and Utilization of National Treasures and Important Cultural Properties
Special Historic Site Sannai Maruyama Site, 49th Archaeological Excavation	Sannai Maruyama Jomon Culture Center	3 June 2024 – 31 October 2024	An excavation to confirm the distribution of pit tombs and artifacts along the northern end of the Sannai Maruyama Prehistoric Site No.2 Road Remains. 340m <sup>2</sup> excavated in total.	No	Archaeological excavation projects in the prefecture
Sannai Maruyama Site Special Research Promotion Project (Joint Research)	Sannai Maruyama Jomon Culture Center	11 March 2025	A meeting regarding the collaborative research project "Understanding Settlement Characteristics Through Cylindrical Earthenware Culture," which considers Northern Japan's upper layer style cylindrical earthenware artifacts and the periods they were produced.	No	No
Sannai Maruyama Site Special Research Promotion Project (Open Call for Proposals)	Sannai Maruyama Jomon Culture Center	April 2024 – March 2025	Public recruitment for research projects in order to promote wider understanding of the Sannai Maruyama Prehistoric Site, and further research regarding cylindrical earthenware culture and Jomon culture. (2 projects accepted) ・"Study of the Distribution of Stone Tombs in the Aomori Prefecture Region in the Late-Middle to Early-End of the Jomon Period —Focusing on Stone Circle Tombs in the Sannai Maruyama Site—" ・"Deciphering the Influence of Human Utilization of Sambucus on The Genus' Morphology"	No	No
Site Environment Surveys	Sannai Maruyama Jomon Culture Center	1 April 2024 – 31 March 2025	Data on temperature, humidity, etc. underneath shade covers was collected to develop long-term conservation methods and display of exposed remains, and groundwater level and water quality surveys were conducted in the northern valley to monitor the conservation status of organic remains.	No	No
Related Site Surveys	Sannai Maruyama Jomon Culture Center	1 March 2025	A survey held with Hokuto City, Yamanashi Prefecture as a case study to collect information about site development, preservation and utilization projects, and organizational and management bodies, etc.	No	No
Oyu Stone Circles Inspection	Kazuno City Board of Education	8–25 October 2024	A survey to understand the connection between the Oyu Stone Circles and a slope located to their north, outside of the historic site registered area. The survey covered 31.0m <sup>2</sup> .	No	Subsidy for Preservation and Utilization of National Treasures and Important Cultural Properties
Site Excavation	Tsugaru City Board of Education	May–June 2024	A survey to check the site's contemporary embankment thickness in preparation for site development plans.	No	Subsidy for Preservation and Utilization of National Treasures and Important Cultural Properties
Jomon Period Technical Knowledge as Understood Through Weaving Methods	Korekawa Archaeological Institution, Special Associate Professor Yuka Sasaki, at Institute for the Study of Ancient Civilizations and Cultural Resources Kanazawa University	April 2024 – March 2025	Analysis to decipher the materials and methods used in the rantai lacquerware, textiles and woven artifacts excavated in the Nakai Site.	No	Yes

【Reports and other documents containing research findings, etc.】

Title	Author	Format/volume	Printed copies	Language	Summary	Funding etc.
Results of the 2024 Survey of Visitor Trends at Jomon Prehistoric Sites in Northern Japan	Headquarters for World Heritage Jomon Prehistoric Sites	Electronic data, A4, 114 pages	-	Japanese	This report summarizes the results of a visitor trend survey conducted in FY2024.	No
Odai Yamamoto Site Development Report	Sotogahama Town Board of Education	A4, 182	100 copies	Japanese	This report summarizes the development projects conducted in the Odai Yamamoto Site.	No
Odai Yamamoto Site Facility Mumon-kan Museum Annual Report 1	Sotogahama Town Board of Education	A4, 50	200 copies	Japanese	This report summarizes the activities and surveys held by the Odai Yamamoto Site Facility Mumon-kan Museum in FY2024.	No
Tagoyano Site Excavation Report	Tsugaru City Board of Education	A4 format, 160 pages	300 copies	Japanese	This publication officially reported the results of the surveys taken place at the site in FY2024.	Subsidy for Preservation and Utilization of National Treasures and Important Cultural Properties
Aomori Prefecture Buried Cultural Properties Investigation Report No. 651, Sannai Maruyama Site 49	Sannai Maruyama Jomon Culture Center	A4, 116 pages	300 copies	Japanese	This report summarizes excavation results of Prehistoric to post-Middle Age site surveys held from 1992 to 1994 in preparation for park expansion upon the shift to prefectural management.	Archaeological excavation projects in the prefecture
Special Historic Site Sannai Maruyama Site Research Bulletin 6	Sannai Maruyama Jomon Culture Center	A4, 86 pages	500 copies	Japanese	1 About 2023 Archaeological Excavations 2 Research Notes 3 Summary Report on the Results of the Special Research Promotion Project 4 Conservation and Restoration Project of Artifacts Excavated from the Sannai Maruyama Site 5 Summary of Additionally Inscribed Important Cultural Properties	No
Presentation Material for the Report Meeting of Special Historic Site Sannai Maruyama Site in 2024	Sannai Maruyama Jomon Culture Center	A4, 26 pages	100 copies	Japanese	Part 1: Archaeological Excavation Results Report Part 2: Special Research Report	No
Special Historic Site Sannai Maruyama Site 49th Archaeological Excavation Field Briefing	Sannai Maruyama Jomon Culture Center	A3, 2 pages	150 copies	Japanese	Field presentation on the results of the 49th archaeological excavation.	No
Special Exhibition "The Bountiful Sea and Jomon — Mutsu Bay and Sannai Maruyama—"	Sannai Maruyama Jomon Culture Center	A5, 58 pages	900 copies	Japanese	Guidebook for the special exhibition, "The Bountiful Sea and Jomon —Mutsu Bay and Sannai Maruyama—."	No
Special Exhibition "Jomon Tied by the Sea — Tsugaru Strait and Sannai Maruyama—"	Sannai Maruyama Jomon Culture Center	A5, 58 pages	1,000 copies	Japanese	Guidebook for the special exhibition, "Jomon Tied by the Sea —Tsugaru Strait and Sannai Maruyama—."	No
"Kazuno City Site Distribution Survey Report"	Kazuno City Board of Education	A4, 42 pages	100 copies	Japanese	Test excavations held at sites within the city, Oyu Stone Circles Inspection, Oyu Stone Circles related site excavation survey.	Subsidy for Preservation and Utilization of National Treasures and Important Cultural Properties
Kamegaoka Burial Site Excavation Survey Report	Tsugaru City Board of Education	A4 format, 164 pages	300 copies	Japanese	This publication officially reported the results of the surveys taken place at the site in FY2023.	Subsidy for Preservation and Utilization of National Treasures and Important Cultural Properties
Special Exhibition "Research on Weaving/Combining"	Korekawa Archaeological Institution	A4, 100 pages	1,000 copies	Japanese	Special exhibition catalogue.	No
Exhibition "When the Dogu with Palms Pressed Together Was Made"	Korekawa Archaeological Institution	A4, 50 pages	1,000 copies	Japanese	Fall seasonal exhibition catalogue.	No
Research Bulletin, No. 14	Korekawa Archaeological Institution	A4, 45 pages	500 copies	Japanese		No
Korekawa Site Artifact List "Izumiyama Collection 1・2"	Korekawa Archaeological Institution	A4, 200 pages	300 copies (2-volume set)	Japanese		No

Table 7 Research on related cultural properties (related with Indicator II-13)

Name	Author	Format/volume	Printed copies	Language	Summary	Funding etc.
Funkawan Culture, Vol. 19	Date City Institute of Funkawan Culture	A4, 16 pages	5,000	Japanese	Outline of cultural properties in the city	No
Ichinohe Town Annual Report on Cultural Properties 2024	Ichinohe Town Board of Education	A4, 54 pages	150	Japanese	Contains information on the status of implementation of World Heritage-related projects, cultural property-related projects, etc.	No

Table 8 Number of technical staff of local governments in charge of study and research about each component part (related with Indicator II-14)

No.	Name of component part	Name of municipal government	FY 2019	FY 2020	FY 2021	FY 2022	FY 2023	FY 2024	Year-on-year change	Note
001	Odai Yamamoto Site	Sotogahama Town	1	1	1	1	1	2	1	Sotogahama Town Board of Education Social Education Division
002	Kakinoshima Site	Hakodate City	3	3	3	2	2	2	0	Hakodate City Board of Education Lifelong Learning Department Cultural Property Division
007	Ofune Site									
003	Kitakogane Site	Date City	1	1	1	1	1	1	0	Date City Board of Education, Lifelong Learning Division
004	Tagoyano Site	Tsugaru City	4	4	4	4	4	4	0	Tsugaru City Board of Education Social Education and Culture Division
016	Kamegaoka Burial Site									
005	Futatsumori Site	Shichinohe Town	1	1	1	1	1	1	0	Shichinohe Town Board of Education Lifelong Learning Division
006	Sannai Maruyama Site	Aomori Prefecture	9	9	9	10	10	10	0	Sannai Maruyama Jomon Culture Center
008	Goshono Site	Ichinohe Town	3	3	3	3	3	3	0	Ichinohe Town Board of Education World Heritage Section
009	Irie Site	Toyako Town	2	2	2	2	2	2	0	Toyako Town Board of Education Social Education Division
015	Takasago Burial Site									
010	Komakino Stone Circle	Aomori City	3	3	3	3	3	3	0	Aomori City Board of Education Cultural Property Division
011	Isedotai Stone Circles	Kitaakita City	1	1	1	2	2	2	0	Kitaakita City Tourism, Culture, and Sports Department Culture and Sports Division
012	Oyu Stone Circles	Kazuno City	2	2	2	2	2	2	0	Kazuno City Board of Education Oyu Stone Circles Museum
013	Kiusu Earthwork Burial Circles	Chitose City	3	5	5	5	5	6	1	Chitose City Board of Education, Education Department Chief (in charge of national designated Historic Sites), Buried Cultural Properties Centre.
014	Omori Katsuyama Stone Circle	Hirosaki City	2	3	2	2	2	2	0	Hirosaki City Board of Education Cultural Property Division
017	Korekawa Site	Hachinohe City	5	5	5	5	6	6	0	Hachinohe City Buried Cultural Property Center Korekawa Archaeological Institution
—	Component parts in Hokkaido Prefecture	Hokkaido Prefecture	3	3	4	4	4	3	-1	Hokkaido Department of Environment and Community Life Cultural Promotion Division, Cultural Affairs Bureau Jomon World Heritage Promotion Office : 2 person Hokkaido Board of Education Lifelong Learning Promotion Bureau, Cultural Heritage and Museum Division : 2 persons
—	Component parts in Aomori Prefecture	Aomori Prefecture	9	9	8	7	7	6	-1	Aomori Prefectural Board of Education, Cultural Properties Protection Division: 5 persons Sannai Maruyama Jomon Culture Center World Cultural Heritage Division :1 person
—	Component parts in Iwate Prefecture	Iwate Prefecture	3	3	3	3	4	4	0	Iwate Prefecture Department of Culture and Sports Culture Promotion Division: 3 persons Iwate Prefectural Board of Education Secretariat Lifelong Learning and Cultural Properties Division: 1 person
—	Component parts in Akita Prefecture	Akita Prefecture	5	5	7	7	7	7	0	Akita Prefecture Board of Education Cultural Property Protection Section of Lifelong Learning Division
Total			60	63	64	64	66	66	0	

Table 9 Number of public works contracts (related with Indicator III-1)

	Name of component part	FY 2019	FY 2020	FY 2021	FY 2022	FY 2023	FY 2024	Note FY 2024
001	Odai Yamamoto Site	0	0	0	0	0	0	
002	Kakinoshima Site	1	1	0	3	2	3	Construction of the Usujiri Fishing Port Bridge and other works, Construction of the Usujiri Fishing Port Access Road and other works, Relocation of drainage pipes in conjunction with the construction of the Usujiri Fishing Port Access Road
003	Kitakogane Site	0	0	2	1	0	0	
004	Tagoyano Site	3	0	1	1	1	3	Repairs to the water supply control panel at Shako-chan Plaza; construction work at the Tatenoka Community Fire Center (2 projects)
005	Futatsumori Site	0	0	2	0	0	0	
006	Sannai Maruyama Site	1	3	0	0	2	1	Slope protection works
007	Ofune Site	1	2	3	1	1	1	Improvement Work on National Route 278 in Ofuna, Hakodate City
008	Goshono Site	0	1	1	1	1	0	
009	Irie Site	1	0	0	0	0	0	
010	Komakino Stone Circle	0	0	0	0	0	0	
011	Isedotai Stone Circles	4	0	0	0	0	0	
012	Oyu Stone Circles	0	0	0	0	0	0	
013	Kiusu Earthwork Burial Circles	0	1	0	0	0	1	Kiusu Earthwork Burial Circles Improvement and Utilization Project (Construction of Pedestrian Paths, Interpretation Facilities, and Other Facilities)
014	Omori Katsuyama Stone Circle	0	0	1	0	0	0	
015	Takasago Burial Site	1	2	1	0	0	0	
016	Kamegaoka Burial Site	2	0	1	0	1	3	Repairs to the water supply control panel at Shako-chan Plaza; construction work at the Tatenoka Community Fire Center (2 projects)
017	Korekawa Site	0	0	0	0	0	0	
Total		14	10	12	7	8	12	

Table 10 Number of development projects in the private sector (related with Indicator III-2)

[Number of development permission application submissions]

Laws etc.	Provisions	FY 2019	FY 2020	FY 2021	FY 2022	FY 2023	FY 2024	FY 2024 Note
Law for the Protection of Cultural Properties	Article 93	4	1	1	3	1	2	Sannai Maruyama Site: 1 case, Kamegaoka Burial Site: 1 case
	Article 125 (outside of the property)	3	4	5	3	3	4	Korekawa Sites: 4 cases
City Planning Act	Article 29	0	0	0	0	0	0	
Act Concerning the Prevention of Disasters due to Collapse of	Article 7	0	0	0	0	0	0	
Act Concerning the Sediment-related Disaster Prevention Measures in Sediment-related Disaster Prone Areas	Article 10	0	0	0	0	0	0	
City Park Act (Aomori Prefecture City Park Ordinance)	Article 6	0	0	5	5	5	6	Sannai Maruyama Site: 6 cases
Gravel Gathering Act	Article 16	1	1	1	1	2	1	Kamegaoka Burial Site: 1 case
Forest Act	Article 10-2	2	0	0	30	0	0	
	Article 10-8							
	Article 34, paragraph (1)							
	Article 34, paragraph (2)							
	Article 34-2							
Article 34-3								
Article 34-4								
River Act	Article 20	0	0	0	0	0	0	
	Article 24							
	Article 25							
	Article 26, paragraph (1)							
	Article 27, paragraph (1)							
Article 55, paragraph (1)								
Chitose City Ordinance on Ordinary Rivers	Article 5	0	0	0	0	0	0	
Tovako Town Ordinance on Ordinary River Management	Article 5	0	0	0	0	0	0	
Hirosaki City Non-statutory Public Property Management	Article 4	0	0	0	0	0	0	
Hakodate Ordinance on Ordinary River Management	Article 10	0	0	0	0	0	0	
Erosion Control Act (Erosion Control Law Enforcement Ordinance: Akita Prefectural Ordinance.)	Article 4	0	0	0	0	0	0	
Act Concerning the Establishment of Agriculture Promotion Areas	Article 15-2	2	3	2	0	0	2	Tagoyano Site: 1 case, Kamegaoka Burial Site: 1 case
	Article 15-4							
Agricultural Land Act	Article 4, paragraph (1)	1	2	0	2	1	2	Tagoyano Site: 1 case, Kamegaoka Burial Site: 1 case
	Article 5, paragraph (1)							
Road Act	Article 24	3	0	1	6	6	15	Kakinoshima Site: 4 cases, Tagoyano Site: 1 case, Sannai Maruyama Site: 2 cases, Ofune Site: 4 cases, Kiusu Earthwork Burial Circles: 1 case, Kamegaoka Burial Site: 1 case, Korekawa Site: 2 cases
	Article 32							
Act Concerning Graveyards, Burials, etc.	Article 10	0	0	0	0	0	0	
Hakodate Municipal Cemetery Ordinance	Article 8	4	3	9	10	3	8	Kakinoshima Site: 4 cases, Ofune Site: : 4 cases
Detailed Regulations for Enforcement of the Law on Cemetery Burial etc. of Hachinohe City	Article 3	0	0	0	0	0	0	
Fishing Ports and Fishing Grounds Act	Article 39	0	0	0	0	0	0	
Hokkaido Ordinance on the Conservation of the Natural Environment etc.	Article 30	0	0	0	0	0	0	
Total		20	14	24	60	21	40	

Table 11 Number of development projects in the private sector (related with Indicator III-2)

[Number of building confirmation requests]

Laws etc.	Provisions	FY 2019	FY 2020	FY 2021	FY 2022	FY 2023	FY 2024	FY 2023 Note
Number of building confirmation requests		0	1	2	3	4	1	Sannai Maruyama Site: 1 case

Table 12 Number of-notification submission under the Landscape Ordinance (related with Indicator III-3)  
 【Number of notification submission】

	Name of component part	FY 2019	FY 2020	FY 2021	FY 2022	FY 2023	FY 2024	FY 2024 Note
001	Odai Yamamoto Site	0	3	2	1	7	2	Demolition of two sheds
002	Kakinoshima Site	0	0	0	0	1	0	
003	Kitakogane Site	0	0	0	0	0	0	
004	Tagoyano Site	0	0	0	0	0	1	Relocation and New Construction of the Kamegaoka Community Center
005	Futatsumori Site	0	0	0	0	0	0	
006	Sannai Maruyama Site	0	0	2	1	5	0	
007	Ofune Site	0	0	0	1	0	0	
008	Goshono Site	1	3	0	3	2	0	
009	Irie Site	0	0	1	0	0	0	
010	Komakino Stone Circle	0	0	0	0	0	0	
011	Isedotai Stone Circles	0	0	0	0	0	0	
012	Oyu Stone Circles	0	0	0	0	0	0	
013	Kiusu Earthwork Burial Circles	0	0	0	0	1	0	
014	Omori Katsuyama Stone Circle	0	0	0	0	0	0	
015	Takasago Burial Site	0	0	0	0	0	0	
016	Kamegaoka Burial Site	0	0	0	0	0	1	Relocation and New Construction of the Kamegaoka Community Center
017	Korekawa Site	0	0	0	1	0	0	
Total		1	6	5	7	16	4	

Table 13 Number of prior notification submission under the Landscape Ordinance (related with Indicator III-3)

【Number of prior notification submission】

	Name of component part	FY 2019	FY 2020	FY 2021	FY 2022	FY 2023	FY 2024	FY 2024 Note
001	Odai Yamamoto Site	0	3	2	1	6	2	Demolition of two sheds
002	Kakinoshima Site	0	0	0	0	1	0	
003	Kitakogane Site	0	0	0	0	0	0	
004	Tagoyano Site	0	0	0	0	0	0	
005	Futatsumori Site	0	0	0	0	0	0	
006	Sannai Maruyama Site	0	0	0	1	0	0	
007	Ofune Site	0	0	0	1	0	0	
008	Goshono Site	1	3	0	0	0	0	
009	Irie Site	0	0	1	0	0	0	
010	Komakino Stone Circle	0	0	0	0	0	0	
011	Isedotai Stone Circles	0	0	0	0	0	0	
012	Oyu Stone Circles	0	0	0	0	0	0	
013	Kiusu Earthwork Burial Circles	0	0	0	0	1	0	
014	Omori Katsuyama Stone Circle	0	0	0	0	0	0	
015	Takasago Burial Site	0	0	0	0	0	0	
016	Kamegaoka Burial Site	0	0	0	0	0	0	
017	Korekawa Site	0	0	0	0	0	0	
Total		1	6	3	3	8	2	

Table 14 Heritage impact assessments in and around the buffer zone (related with Indicator III-4)  
 【Results of decisions on whether or not a detailed analysis of development activities etc. is required.】

Name of component part	Location	Overview of development etc.	Impact	Detailed analysis	Reasons for the decision taken	Record-keeping body
Odai Yamamoto Site	Buffer Zone	Shed Dismantling	Level 0	Not necessary	The dismantling of an out-of-use shed which will improve the surrounding landscape, positively influencing the site's OUV and attributes. It was determined that the site will experience no negative	Sotogahama Town Board of Education
Odai Yamamoto Site	Buffer Zone	Shed Dismantling	Level 0	Not necessary	The dismantling of an out-of-use shed which will improve the surrounding landscape, positively influencing the site's OUV and attributes. It was determined that the site will experience no negative	Sotogahama Town Board of Education
Kakinoshima Site	Buffer Zone	Installation and Dismantling of Utility Poles, etc.①	Level 0	Not necessary	The digging for the installation of the new utility poles will be limited to the minimum necessary diameter of 40 cm, so there will be little influence on underground remains. Utility poles cannot be seen from vista points, so there will be no influence on the site's appearance.	Hakodate City Board of Education
Kakinoshima Site	Buffer Zone	Tree Planting (20 Japanese Chestnut Trees)	Level 1	Not necessary	The planting of indigenous trees along the road next to the site will improve the site's landscape as seen from vista points. The trees will be planted on ground that was either previously raised or reinforced with a soil substrate, so any influence on underground remains will be minimal.	Hakodate City Board of Education
Kakinoshima Site	Buffer Zone	Installation and Dismantling of Utility Poles, etc.②	Level 0	Not necessary	The digging for the installation of the new utility poles will be limited to the minimum necessary diameter of 40 cm, so there will be little influence on underground remains. Utility poles cannot be seen from vista points, so there will be no influence on the site's appearance.	Hakodate City Board of Education
Kakinoshima Site	Buffer Zone	Felling of Obstructive Trees①	Level 1	Not necessary	Conifers such as the Japanese Larch, exogenous species such as the Black Locust, and other trees not fitting the Jomon period landscape will be felled, which will improve the appearance of the site as seen from vista points. Tree roots will not be removed, so there will be no impact on underground remains.	Hakodate City Board of Education
Kakinoshima Site	Buffer Zone	Felling of Obstructive Trees②	Level 1	Not necessary	The felling will be barely visible from vista points. Conifers not fitting the Jomon period landscape will be cut down, which will improve the natural environment of the area surrounding the site. Tree roots will not be removed, so there will be no impact on underground remains.	Hakodate City Board of Education
Tagoyano Site	Buffer Zone	Installation of Guardrails Within Temporary Pedestrian Paths	Level 0	Not necessary	Though visible from between the component sites, there will be no influence on the sites themselves. Tubes inserted into the ground will be kept within the embankment layer, so there will be no influence on the site's topography. The installation of guardrails will improve visitor safety.	Tsugaru City Board of Education
Tagoyano Site	Buffer Zone	Installation of Instructional Signage Near Temporary Pedestrian Paths	Level 0	Not necessary	Though visible from between the component sites, there will be no influence on the sites themselves. Signs will be installed aboveground or on handrails, so they will have no influence on the site's topography. Their installation will improve visitor accessibility.	Tsugaru City Board of Education
Futatsumori Site	Buffer Zone	Roof Repair of Private Residence	Level 0	Not necessary	There will be no major change to the site's appearance as seen from vista points.	Shichinohe Town Board of Education
Futatsumori Site	Buffer Zone	Construction of Boiler Room	Level 0	Not necessary	There will be no major change to the site's appearance as seen from vista points.	Shichinohe Town Board of Education
Futatsumori Site	Buffer Zone	Removal of Building	Level 0	Not necessary	To be conducted as part of a project to purchase private land within historic site boundaries. There will be no major change to the site's appearance as seen from vista points.	Shichinohe Town Board of Education
Futatsumori Site	Buffer Zone	Removal of Building	Level 0	Not necessary	To be conducted as part of a project to purchase private land within historic site boundaries. There will be no major change to the site's appearance as seen from vista points.	Shichinohe Town Board of Education
Futatsumori Site	Buffer Zone	Tree Felling (Japanese Cedar)	Level 0	Not necessary	There will be no major change to the site's appearance as seen from vista points.	Shichinohe Town Board of Education
Futatsumori Site	Buffer Zone	Large-Scale Felling of Privately-Owned Forest	-	-	This involves the large-scale felling of a privately owned (Japanese Cedar) forest adjacent to the site, and is currently under discussion by related parties.	Shichinohe Town Board of Education
Sannai Maruyama Site	Buffer Zone	Tree Felling	Level 0	Not necessary	There will be no physical impact on the topography, etc. that constitute the site's OUV, and there will be no influence on the site's appearance or landscape.	Sannai Maruyama Jomon Culture Center
Sannai Maruyama Site	Buffer Zone	Replacement of High-Voltage Power Lines	Level 0	Not necessary	There will be no digging, thus any underground remains or the topography that constitutes the site's OUV will not be physically impacted. The work will be visible from vista points within the site, but the wire replacement will not change the site's present appearance or landscape.	Sannai Maruyama Jomon Culture Center

Table 14 Heritage impact assessments in and around the buffer zone (related with Indicator III-4)  
**【Results of decisions on whether or not a detailed analysis of development activities etc. is required.】**

Name of component part	Location	Overview of development etc.	Impact	Detailed analysis	Reasons for the decision taken	Record-keeping body
Sannai Maruyama Site	Buffer Zone	Installation of Outdoor Exhibition	Level 0	Not necessary	There will be no digging, thus any underground remains or the topography that constitutes the site's OUV will not be physically impacted. The work will not be visible from vista points within the site, so there will be no negative influence on the site's present appearance or landscape.	Sannai Maruyama Jomon Culture Center
Sannai Maruyama Site	Buffer Zone	Installation of Outdoor Exhibition	Level 0	Not necessary	This will be a temporary aboveground installation, thus the topography, etc. that constitute the site's OUV will not be physically impacted. The work will not be visible from vista points within the site, so there will be no negative influence on the site's present appearance or landscape.	Sannai Maruyama Jomon Culture Center
Sannai Maruyama Site	Buffer Zone	Installation of Power Supply Equipment	Level 0	Not necessary	The equipment will be extremely small-scale, and will be installed on an existing concrete wall, thus there will be no negative influence on the site's present appearance or landscape.	Sannai Maruyama Jomon Culture Center
Sannai Maruyama Site	Buffer Zone	Replacement/Installation of U-Shaped Gutters	Level 0	Not necessary	No digging will take place, and the work will only replace currently damaged gutters, thus the topography, etc. that constitute the site's OUV will not be physically impacted. The work will not be visible from vista points within the site, so there will be no negative influence on the site's present appearance or landscape.	Sannai Maruyama Jomon Culture Center
Sannai Maruyama Site	Buffer Zone	Planting of Chestnut Seedlings	Level 0	Not necessary	No digging will take place, and the work will on a small scale, thus the topography, etc. that constitute the site's OUV will not be physically impacted. The work will not be visible from vista points within the site, so there will be no negative influence on the site's present appearance or landscape.	Sannai Maruyama Jomon Culture Center
Sannai Maruyama Site	Buffer Zone	Private Residence Construction Plan	Level 0	Not necessary	The topography, etc. that constitute the site's OUV will not be physically impacted. The work will not be visible from vista points within the site, so there will be no negative influence on the site's present appearance or landscape.	Sannai Maruyama Jomon Culture Center
Sannai Maruyama Site	Outside of Buffer Zone	Update of Road Signage	Level 0	Not necessary	The work will take place outside of the site's buffer zone, thus the topography, etc. that constitute the site's OUV will not be physically impacted. The work will not be visible from vista points within the site, so there will be no negative influence on the site's present appearance or landscape.	Sannai Maruyama Jomon Culture Center
Sannai Maruyama Site	Outside of Buffer Zone	Construction of Wireless Cell Tower	Level 0	Not necessary	The work will take place outside of the site's buffer zone, thus the topography, etc. that constitute the site's OUV will not be physically impacted. The work will not be visible from vista points within the site, so there will be no negative influence on the site's present appearance or landscape.	Sannai Maruyama Jomon Culture Center
Goshono Site	Buffer Zone	Landslide Prevention Work (Installation of Landslide Prevention Facilities) 【Contractor: Iwate Prefecture Northern Regional Development Bureau】	Level 0	Not necessary	There will be no impact on the site or the landscape visible from vista points.	Ichinohe Town Board of Education
Goshono Site	Buffer Zone	Repairs of Wood Flooring on Eastern Side of Museum 【Contractor: Ichinohe Town Board of Education】	Level 0	Not necessary	There will be no impact on the site or the landscape visible from vista points.	Ichinohe Town Board of Education
Goshono Site	Buffer Zone	Kikiki-no-Tsurihashi Roof Repairs 【Contractor: Ichinohe Town Board of Education】	Level 0	Not necessary	There will be no impact on the site or the landscape visible from vista points.	Ichinohe Town Board of Education
Goshono Site	Buffer Zone	Repairs of Guardrails in Park Behind Museum 【Contractor: Ichinohe Town Board of Education】	Level 0	Not necessary	There will be no impact on the site or the landscape visible from vista points.	Ichinohe Town Board of Education
Goshono Site	Buffer Zone	Felling of Trees Damaged by Pine Wood Nematodes 【Contractor: Ichinohe Town】	Level 0	Not necessary	There will be no impact on the site or the landscape visible from vista points.	Ichinohe Town Board of Education

Table 14 Heritage impact assessments in and around the buffer zone (related with Indicator III-4)  
 【Results of decisions on whether or not a detailed analysis of development activities etc. is required.】

Name of component part	Location	Overview of development etc.	Impact	Detailed analysis	Reasons for the decision taken	Record-keeping body
Goshono Site	Buffer Zone	Felling of Obstructive Trees 【Contractor: Ichinohe Town Board of Education】	Level 0	Not necessary	This will have no influence on the site. The felling will change the view as seen from vista points, but there is a mountainous forest in the background of the site, so the impact will be minimal.	Ichinohe Town Board of Education
Oyu Stone Circles	Buffer Zone	Stone Circle Summer Solstice Festival 2024	Level 0	Not necessary	It is predicted that there will be temporary crowding in the guidance facility's parking lot, but it was determined that there will be no negative impact on the site's OUV.	Kazuno City Board of Education
Oyu Stone Circles	Buffer Zone	Oyu Stone Circles Jomon Festival	Level 0	Not necessary	There will be a temporary visual impact on the site and it is expected that an increased number of visitors will enter the site and its buffer zone, but it was determined this will not have a negative impact on elements that comprise the site's OUV.	Kazuno City Board of Education
Oyu Stone Circles	Buffer Zone	Electric Fence Removal	Level 1	Not necessary	Electric fences will be removed, which was determined to have no negative influence on elements constituting the site's OUV.	Kazuno City Board of Education
Oyu Stone Circles	Buffer Zone	Electric Fence Installation	Level 1	Not necessary	Facilities such as electric fences will temporarily influence the site's appearance, but there will be no negative influence on elements constituting the site's OUV.	Kazuno City Board of Education
Oyu Stone Circles	Buffer Zone	Oyu Stone Circles Inspection	Level 0	Not necessary	An excavation that will take place halfway up a slope, so it will have no negative influence on the site's landscape or appearance.	Kazuno City Board of Education
Kiusu Earthwork Burial Circles	Buffer Zone	Kiusu Earthwork Burial Circles Site Development Project (Design Plan)	Level 2	Necessary	This is part of the site's Historical Site Development Project, which includes work that will require submission of a Notification Under the Landscape Ordinance to the surrounding areas.	Chitose City Board of Education
Kiusu Earthwork Burial Circles	Buffer Zone	Installation of Temporary Information Center	Level 1	Not necessary	A temporary single-floor guidance facility building with a floorspace of 70 m <sup>2</sup> , that will be dismantled at the end of November. The influence it will have on the site and surrounding landscape is incredibly small and temporary. Installation does not require digging, so there will be no influence on the site's	Chitose City Board of Education
Omori Katsuyama Site	Outside of Buffer Zone	Omori Katsuyama Site Interpretation Facility Development Design	Level 0	Necessary	A guidance facility to be built outside of the buffer zone with the purpose of teaching visitors about the value of Omori Katsuyama and other Jomon sites. The guidance facility will be located 2 km away from the site itself, so it was determined that it will be necessary to analyze the impact this may have on	Hirosaki City Board of Education
Omori Katsuyama Site	Buffer Zone	Omori Katsuyama Site Rest and Convenience Facility Development	Level 0	Necessary	A facility for visitors set up within the site's buffer zone. It was determined that an analysis of the facility's influence on the ground and topography connecting the facility to the site, and of the facility's influence on the site's appearance within its surrounding environment, etc. is necessary.	Hirosaki City Board of Education
Omori Katsuyama Site	Buffer Zone	Omori Katsuyama Site Parking Lot Paving	Level 0	Necessary	The paving and installation of guardrails in the visitor parking lot. A roadbed has already been laid, and what remains is to remove 15 cm of the roadbed surface and lay the upper layer of pavement. Its impact is rated Level 0, but it will take place within the buffer zone, so it was determined that an analysis of the facility's influence on the ground and topography connecting the facility to the site, and of the facility's influence on the site's appearance within its surrounding environment, etc. is necessary.	Hirosaki City Board of Education
Kamegaoka Burial Site	Buffer Zone	Construction of New Community Center	Level 0	Not necessary	The work will not have any impact on the site, any artifacts, or the existing topography, and it will not be visible from vista points. It will be within site boundaries, but not along the site's visitor paths.	Tsugaru City Board of Education
Kamegaoka Burial Site	Buffer Zone	Installation of Utility Poles for New Community Center	Level 0	Not necessary	The work will not have any impact on the site, any artifacts, or the existing topography, and it will not be visible from vista points. It will be within site boundaries, but not along the site's visitor paths. Electrical infrastructure will help the construction needed to move the community center away from the within the	Tsugaru City Board of Education
Kamegaoka Burial Site	Buffer Zone	Installation of Temporary Restrooms at the Jomon Site Guidance Center	Level 0	Not necessary	Temporary toilets will be installed aboveground and will collect dirty water, thus they will have no impact on the site's topography or low-lying wetland environment. Their installation will improve visitor	Tsugaru City Board of Education
Kamegaoka Burial Site	Buffer Zone	Installation of Benches in the Jomon Site Guidance Center	Level 0	Not necessary	Benches will be installed aboveground, and will have no impact on the site's topography or surrounding environment. The wooden material used will be chosen in a color that does not take away from the site's value or atmosphere. The benches will not be visible from site vista points. Their installation will improve visitor accessibility.	Tsugaru City Board of Education
Korekawa Site	Buffer Zone	Roadside Gutter Replacement	Level 0	Not necessary	The gutters are located outside of the area known to have buried cultural properties, and the replacements will appear the same as the previous ones, so there will be no impact to the site's appearance.	Korekawa Archaeological Institution

Table 14 Heritage impact assessments in and around buffer zones (related with Indicator III-4)

【Projects for which detailed analysis has been carried out.】

Name of component part	Location	Overview of development etc.	Methods of analysis	Results of analysis	Reasons of assessment	Record-keeping body
Kiusu Earthwork Burial Circles	Buffer zone	Kiusu Earthwork Burial Circles Historic Site Improvement and Utilization Project (Detailed Design)	Analyse the impact on topography, landscape and views based on the detailed design for this project	There is no potential for adverse impacts on significant universal values	There will be virtually no change to the view from the vantage point; measures will be taken to minimise any adverse impact on the topography, landscape and views, and due consideration will be given to the preservation of the component parts.	Chitose City Board of Education
Omori Katsuyama Stone Circle	Outside the buffer zone	Detailed Design for the Interpretation Facility at the Omori Katsuyama Stone Circle	Review the project details regarding the impact on visitors	There are no adverse impacts	(1) As the facility will be located some distance from the component parts, mutual guidance will be provided to promote understanding. Furthermore, to ensure the value of the site is communicated during the development period, artefacts will be exhibited at a facility within the city under the guise of a travelling exhibition, serving as a temporary alternative display. (2) The development is expected to increase visitor numbers, which is likely to have a significant impact on local residents; however, thorough awareness-raising measures will be implemented. As the above mitigation measures are being considered, steps will be taken to minimise any negative impact on the component parts to the greatest extent possible.	Hirosaki City Board of Education
Omori Katsuyama Stone Circle	Buffer zone	Detailed Design for the facilities and infrastructure at the Omori Katsuyama Stone Circle	Review the design details regarding the impact of the project on land, topography, landscape, views and visitors	There are no adverse impacts	(1) Construction will be carried out without significantly altering the existing land or topography, and no water will be drawn from the river. (2) The exterior design of the buildings will be tailored to blend in with the surrounding natural landscape. (3) No other new developments resulting from this project are anticipated. As the above mitigation measures are under consideration, steps will be taken to minimise any adverse impact on the component parts.	Hirosaki City Board of Education
Omori Katsuyama Stone Circle	Buffer zone	Paving and Related Works for the Car Park at the Omori Katsuyama Stone Circle	Review the project details regarding the impact of the project on land, topography, landscape, views and visitors	There are no adverse impacts	(1) Construction will be carried out in such a way as not to significantly alter the existing land or topography. (2) Although visible from the vantage point, care will be taken to ensure that the paving materials and fall protection barriers are designed to blend in with the surrounding natural landscape. (3) No other new developments resulting from this project are anticipated. As the above mitigation measures are being considered, steps will be taken to minimise the negative effects on the constituent parts.	Hirosaki City Board of Education

Table 15 Number of visitors (related with Indicator VI-1)  
 【Component part】

Name of component part	April	May	June	July	August	September	October	November	December	January	February	March	Total	Average per month
001 Odai Yamamoto Site	1,053	1,918	1,048	919	1,233	1,165	1,070	441	89	114	95	237	9,382	782
002 Kakinoshima Site	2,517	4,031	3,500	3,452	4,620	3,826	4,228	1,609	455	424	428	937	30,027	2,502
003 Kitakogane Site	1,043	1,819	3,723	4,165	2,372	2,415	2,225	864	Winter closure	Winter closure	Winter closure	Winter closure	18,626	1,552
004 Tagoyano Site	25	219	143	87	132	205	263	60	0	0	0	0	1,134	95
005 Futatsumori Site	283	700	459	509	563	531	441	362	Winter closure	Winter closure	Winter closure	Winter closure	3,848	321
006 Sannai Maruyama Site	18,743	24,898	21,850	27,974	47,874	28,413	23,458	14,408	3,782	2,798	7,600	11,889	233,687	19,474
007 Ofune Site	1,656	2,612	2,541	2,507	2,871	2,661	2,389	1,151	170	153	124	494	19,329	1,611
008 Goshono Site	1,863	4,330	2,681	2,912	3,206	3,542	4,450	2,898	775	786	862	1,369	29,674	2,473
009 Irie Site	548	906	920	1,414	1,301	1,123	788	381	Winter closure	Winter closure	Winter closure	Winter closure	7,381	615
010 Komakino Stone Circle	192	1,060	905	871	877	1,119	1,044	287	0	0	0	12	6,367	531
011 Isedotai Stone Circles	689	1,543	1,201	939	1,342	2,751	1,264	Winter closure	Winter closure	Winter closure	Winter closure	Winter closure	9,729	811
012 Oyu Stone Circles	1,504	3,367	2,656	1,952	4,083	3,581	3,688	1,409	Winter closure	Winter closure	Winter closure	Winter closure	22,240	1,853
013 Kiusu Earthwork Burial Circles	266	706	852	836	938	1,040	802	349	Closed for construction	Winter closure	Winter closure	Winter closure	5,789	482
014 Omori Katsuyama Stone Circle	397	1,151	676	1,112	728	533	845	148	0	Winter closure	Winter closure	Winter closure	5,590	466
015 Takasago Burial Site	Refer to 009												-	-
016 Kamegaoka Burial Site	572	1,101	1,116	797	1,475	968	1,301	556	0	0	0	0	7,886	657
017 Korekawa Site	0	0	0	0	0	0	0	0	0	0	0	0	0	0
Total	31,351	50,361	44,271	50,446	73,615	53,873	48,256	24,923	5,271	4,275	9,109	14,938	410,689	34,224

【Interpretation facility】

Name of component part	April	May	June	July	August	September	October	November	December	January	February	March	Total	Average per month
001 Odai Yamamoto Site	1,053	1,918	1,048	919	1,233	1,165	1,070	441	89	114	95	237	9,382	782
002 Kakinoshima Site	2,165	3,803	3,489	3,598	5,224	3,930	3,494	2,204	614	596	470	1,207	30,794	2,566
003 Kitakogane Site	1,043	1,819	3,723	4,165	2,372	2,415	2,225	864	Not counted	Not counted	Not counted	Not counted	18,626	1,552
004 Tagoyano Site	363	849	711	636	828	665	958	419	105	59	67	128	5,788	482
005 Futatsumori Site	283	700	459	509	563	531	441	362	107	128	349	242	4,674	390
006 Sannai Maruyama Site	18,743	24,898	21,850	27,974	47,874	28,413	23,458	14,408	3,782	2,798	7,600	11,889	233,687	19,474
007 Ofune Site	Refer to 002													
008 Goshono Site	662	1,741	1,279	1,141	1,465	1,558	1,640	1,157	151	106	196	356	11,452	954
009 Irie Site	548	906	920	1,414	1,301	1,123	788	381	189	186	216	502	8,474	706
010 Komakino Stone Circle	1,654	1,979	2,175	2,446	1,872	1,808	2,281	1,156	787	759	676	1,279	18,872	1,573
011 Isedotai Stone Circles	1,142	1,805	1,815	1,204	1,809	3,543	1,507	744	115	173	196	203	14,256	1,188
012 Oyu Stone Circles	1,504	3,367	2,656	1,952	4,083	3,581	3,688	1,481	280	222	325	461	23,600	1,967
013 Kiusu Earthwork Burial Circles	209	263	344	607	639	731	546	155	80	75	89	142	3,880	323
014 Omori Katsuyama Stone Circle	61	177	104	171	112	82	130	0	0	Closed for construction	Closed for construction	Closed for construction	837	70
015 Takasago Burial Site	Refer to 009													
016 Kamegaoka Burial Site	220	388	270	296	502	339	373	584	19	3	13	65	3,072	256
017 Korekawa Site	1,883	3,172	2,876	3,475	5,780	3,430	3,559	3,102	918	992	1,631	1,773	32,591	2,716
Total	31,533	47,785	43,719	50,507	75,657	53,314	46,158	27,458	7,236	6,211	11,923	18,484	419,985	34,999

Table 16 Number of visitors (related with Indicator VI-1)  
[Changes in the number of visitors at each component part]

Name of component part	FY 2020	FY 2021	FY 2022	FY 2023	FY 2024	Year-on-year change
001 Odai Yamamoto Site	1,294	0	3,213	3,047	9,382	6,335
002 Kakinoshima Site	260	26,871	43,478	34,063	30,027	▲ 4,036
003 Kitakogane Site	8,663	14,303	18,983	16,011	18,626	2,615
004 Tagoyano Site	1,290	2,729	1,309	1,654	1,134	▲ 520
005 Futatsumori Site	660	5,565	5,893	4,564	3,848	▲ 716
006 Sannai Maruyama Site	75,584	93,327	207,095	244,579	233,687	▲ 10,892
007 Ofune Site	10,324	25,682	29,405	23,137	19,329	▲ 3,808
008 Goshono Site	19,589	32,426	34,345	28,365	29,674	1,309
009 Irie Site	258	4,547	8,383	6,475	7,381	906
010 Komakino Stone Circle	3,896	7,104	8,631	7,494	6,367	▲ 1,127
011 Isedotai Stone Circles	2,895	13,274	11,077	9,113	9,729	616
012 Oyu Stone Circles	13,627	30,587	25,988	27,452	22,240	▲ 5,212
013 Kiusu Earthwork Burial Circles	2,675	6,173	10,631	6,659	5,789	▲ 870
014 Omori Katsuyama Stone Circle	4,542	12,940	12,337	11,435	5,590	▲ 5,845
015 Takasago Burial Site						Refer to 009
016 Kamegaoka Burial Site		Refer to 004	3,759	7,257	7,886	629
017 Korekawa Site	119	0	0	0	0	0
Total	145,676	275,528	424,527	431,305	410,689	▲ 20,616

Table 17 Number of motor vehicles (related with Indicator VI-2)  
[Number of motor vehicles at each component part]

Name of component part	FY 2020	FY 2021	FY 2022	FY 2023	FY 2024	Year-on-year change
001 Odai Yamamoto Site	0	10	10	10	20	10
002 Kakinoshima Site	41	41	41	40	40	0
003 Kitakogane Site	50	50	50	92	92	0
004 Tagoyano Site	6	11	17	17	17	0
005 Futatsumori Site	11	10	10	10	10	0
006 Sannai Maruyama Site	513	513	513	513	513	0
007 Ofune Site	15	15	15	27	27	0
008 Goshono Site	165	165	165	165	165	0
009 Irie Site	0	0	0	0	5	5
010 Komakino Stone Circle	44	10	10	10	10	0
011 Isedotai Stone Circles	0	0	0	0	0	0
012 Oyu Stone Circles	10	10	10	10	10	0
013 Kiusu Earthwork Burial Circles	32	37	37	37	37	0
014 Omori Katsuyama Stone Circle	30	30	30	30	30	0
015 Takasago Burial Site	0	0	9	0	9	9
016 Kamegaoka Burial Site	11	11	17	17	17	0
017 Korekawa Site	30	30	30	30	30	0
Total	958	943	964	1,008	1,032	24

\*Figures are the combined number of regular vehicles and buses.

[Changes in the number of visitors at each interpretation facility]

Name of interpretation facility	FY 2020	FY 2021	FY 2022	FY 2023	FY 2024	Year-on-year change
Odai Yamamoto Jomon Museum*	1,294	3,284	3,213	3,047	9,382	6,335
Hakodate Jomon Culture Center	18,307	29,838	36,936	31,551	30,794	▲ 757
Kitakogane Site Information Center	8,663	14,303	18,983	16,011	18,626	2,615
Tsugaru City Jomon Dwelling Museum	1,384	3,667	2,856	8,219	5,788	▲ 2,431
Futatsumori Shell Midden Museum	—	5,957	6,573	5,209	4,674	▲ 535
Sannai Maruyama Jomon Culture Center	75,584	93,327	207,095	244,579	233,687	▲ 10,892
Hakodate Jomon Culture Center	—	—	—	—	—	—
Goshono Jomon Museum	6,085	16,565	16,624	13,505	11,452	▲ 2,053
Irie Takasago Museum	176	4,547	8,383	7,383	8,474	1,091
Aomori City Komakino Stone Circle Preservation Museum	9,438	14,159	18,596	18,999	18,872	▲ 127
Isedotai Jomon Museum	5,133	18,346	16,871	14,923	14,256	▲ 667
Oyu Stone Circles Museum	13,627	30,587	29,775	29,144	23,600	▲ 5,544
Chitose City Buried Cultural Properties Center	1,236	1,974	2,748	3,248	3,880	632
Susono District Physical Culture Exchange Center	9,511	6,163	1,384	1,800	837	▲ 963
Irie Takasago Museum	—	—	—	—	—	—
Tsugaru City Kizukuri Kamegaoka Archaeological Museum	1,290	2,729	4,203	3,679	3,072	▲ 607
Korekawa Archaeological Institution	15,739	23,514	30,358	33,596	32,591	▲ 1,005
Total	167,467	268,960	404,598	434,893	419,985	▲ 14,908

\*Until the 2023 financial year: Sotogahama Oyama Furusato Shiryokan

[Number of parking spaces at each interpretation facility]

Name of interpretation facility	FY 2020	FY 2021	FY 2022	FY 2023	FY 2024	Year-on-year change
Odai Yamamoto Jomon Museum	6	6	6	6	20	14
Hakodate Jomon Culture Center	41	41	41	40	40	0
Kitakogane Site Information Center	50	50	50	92	92	0
Tsugaru City Jomon Dwelling Museum	30	30	30	30	30	0
Futatsumori Shell Midden Museum	37	16	16	16	16	0
Sannai Maruyama Jomon Culture Center	513	513	513	513	513	0
Hakodate Jomon Culture Center	—	—	—	—	—	—
Goshono Jomon Museum	165	165	165	0	0	0
Irie Takasago Museum	40	40	40	40	40	0
Aomori City Komakino Site Preservation Museum	92	20	20	20	20	0
Isedotai Jomon Museum	124	124	124	124	124	0
Oyu Stone Circles Museum	50	50	50	50	50	0
Chitose City Buried Cultural Properties Center	38	38	38	38	38	0
Susono District Physical Culture Exchange Center	50	50	50	50	50	0
Irie Takasago Museum	—	—	—	—	—	—
Tsugaru City Kizukuri Kamegaoka Archaeological Museum	30	30	30	30	30	0
Korekawa Archaeological Institution	92	92	86	92	92	0
Total	1,358	1,265	1,259	1,141	1,155	14

\*Figures are the combined number of regular vehicles and buses.

Table 18 Number of motor vehicles (related with Indicator VI-2)

[Number of days when the parking spaces of each component part are fully used]

Unit: days

Name of component part	April	May	June	July	August	September	October	November	December	January	February	March	Total	Average per month
001 Odai Yamamoto Site	1	0	0	0	0	1	0	0	0	0	0	0	2	0
002 Kakinoshima Site	2	4	0	1	6	1	2	3	0	0	0	0	19	2
003 Kitakogane Site	0	0	0	0	0	0	0	0	0	0	0	0	0	0
004 Tagoyano Site	0	0	0	0	0	1	0	0	0	0	0	0	1	0
005 Futatsumori Site	0	0	0	0	0	0	0	0	0	0	0	0	0	0
006 Sannai Maruyama Site	0	0	0	0	0	0	0	0	0	0	0	0	0	0
007 Ofune Site	0	0	0	0	0	0	0	0	0	0	0	0	0	0
008 Goshono Site	0	0	0	0	0	0	0	0	0	0	0	0	0	0
009 Irie Site	0	0	0	0	0	0	0	0	0	0	0	0	0	0
010 Komakino Stone Circle	0	0	0	0	0	0	0	0	0	0	0	0	0	0
011 Isedotai Stone Circles	0	0	0	0	0	0	0	0	0	0	0	0	0	0
012 Oyu Stone Circles	0	0	1	0	0	1	0	0	0	0	0	0	2	0
013 Kiusu Earthwork Burial Circles	0	0	0	0	0	0	0	0	Closed for construction	Winter closure	Winter closure	Winter closure	0	0
014 Omori Katsuyama Stone Circle	Not counted	Not counted	Not counted	Not counted	1	Not counted	Not counted	Not counted	Not counted	Not counted	Not counted	Not counted	1	0
015 Takasago Burial Site	0	0	0	0	0	0	0	0	0	0	0	0	0	0
016 Kamegaoka Burial Site	0	0	0	0	0	1	0	0	0	0	0	0	1	0
017 Korekawa Site	0	0	0	0	0	0	0	0	0	0	0	0	0	0
Total	3	4	1	1	7	5	2	3	0	1	0	0	26	4

[Number of days when parking spaces of each Interpretation facility are fully occupied]

Unit: days

Name of component part	April	May	June	July	August	September	October	November	December	January	February	March	Total	Average per month
001 Odai Yamamoto Site	1	0	0	0	0	1	0	0	0	0	0	0	2	0
002 Kakinoshima Site	2	4	0	1	6	1	2	3	0	0	0	0	19	2
003 Kitakogane Site	0	0	0	0	0	0	0	0	0	0	0	0	0	0
004 Tagoyano Site	0	0	0	0	0	0	0	0	0	0	0	0	0	0
005 Futatsumori Site	0	0	0	0	0	0	0	0	0	0	1	0	1	0
006 Sannai Maruyama Site	0	0	0	0	0	0	0	0	0	0	0	0	0	0
007 Ofune Site						Refer to 002								
008 Goshono Site	0	0	0	0	0	0	0	0	0	0	0	0	0	0
009 Irie Site	0	0	0	0	0	0	0	0	0	0	0	0	0	0
010 Komakino Stone Circle	1	0	1	0	0	0	1	0	0	0	0	0	3	0
011 Isedotai Stone Circles	0	0	0	0	0	1	0	0	0	0	0	0	1	0
012 Oyu Stone Circles	0	0	1	0	0	1	0	0	0	0	0	0	2	0
013 Kiusu Earthwork Burial Circles	0	0	0	0	0	0	0	0	0	0	0	0	0	0
014 Omori Katsuyama Stone Circle	Not counted	Not counted	Not counted	Not counted	Not counted	Not counted	Not counted	Not counted	Not counted	Not counted	Not counted	Not counted	0	0
015 Takasago Burial Site						Refer to 009								
016 Kamegaoka Burial Site	0	0	0	0	0	0	0	0	0	0	0	0	0	0
017 Korekawa Site	0	0	0	0	1	0	0	1	0	0	1	0	3	0
Total	4	4	2	1	7	4	3	4	0	0	2	0	31	3

Table 19 State of installation of convenience facilities etc. (related with Indicator VI-3)

[State of installation of convenience facilities etc. at each component part] Not yet installed: - / Installed: ○

	Name of component part	Resting room	Toilet	Nursing facility	Facilities for the elderly	Communication environment	Note
001	Odai Yamamoto Site	-	-	-	○	○	Facilities for infants and young children: nursing room, accessible toilets, wheelchair hire; Other: Museum shop
002	Kakinoshima Site	○	○	○	○	○	Accessible toilet, rental wheelchairs are available.
003	Kitakogane Site	-	○	-	○	○	Parking lot restrooms will be in operation from FY2023 (Accessible restrooms)
004	Tagoyano Site	○	○	-	-	○	
005	Futatsumori Site	○	○	-	-	-	Set up an information center adjacent to the component part
006	Sannai Maruyama Site	○	○	○	○	-	
007	Ofune Site	○	○	○	○	-	Accessible toilet, rental wheelchairs are available.
008	Goshono Site	○	○	-	-	○	Accessible toilet, rental wheelchairs are available.
009	Irie Site	-	○	-	-	○	
010	Komakino Stone Circle	○	○	○	-	-	Accessible toilet is available.
011	Isedotai Stone Circles	-	-	-	-	-	
012	Oyu Stone Circles	-	-	○	○	-	Rental wheelchair and baby strollers are available
013	Kiusu Earthwork Burial Circles	-	○	-	-	-	Temporary Restrooms are available from April to November
014	Omori Katsuyama Stone Circle	-	○	-	-	-	Temporary restrooms are available, others to be developed in 2025
015	Takasago Burial Site	-	-	-	-	○	
016	Kamegaoka Burial Site	○	○	-	-	○	
017	Korekawa Site	○	○	-	○	-	Currently closed

[State of installation of convenience facilities etc. at each interpretation facility] -Not yet installed: - / Installed: ○

	Name of component part	Resting room	Toilet	Nursing facility	Facilities for the elderly	Communication environment	Note
001	Odai Yamamoto Site	○	○	○	○	○	Facilities for infants and young children: nursing room, accessible toilets, wheelchair hire; Other: Museum shop
002	Kakinoshima Site	○	○	○	○	○	Accessible toilet, rental wheelchairs, and baby strollers are available.
003	Kitakogane Site	○	○	-	○	○	Accessible toilet, rental wheelchairs are available.
004	Tagoyano Site	○	○	-	-	○	
005	Futatsumori Site	○	○	○	○	○	
006	Sannai Maruyama Site	○	○	○	○	○	Infant facilities: nursing room, baby strollers available for rent Other: Museum store, restaurant, stores
007	Ofune Site	○	○	○	○	○	Accessible toilet, rental wheelchairs and baby strollers are available.
008	Goshono Site	○	○	-	-	○	Accessible toilet, rental wheelchairs are available.
009	Irie Site	○	○	-	○	○	
010	Komakino Stone Circle	○	○	○	○	○	Accessible toilet, rental wheelchairs, and baby strollers are available. It is also equipped with wheelchair lifts.
011	Isedotai Stone Circles	-	○	-	○	○	
012	Oyu Stone Circles	-	○	○	○	○	Accessible toilet, rental wheelchairs, and baby strollers are available.
013	Kiusu Earthwork Burial Circles	-	○	-	○	○	Accessible toilet, rental wheelchairs, and free-Wi-Fi are available.
014	Omori Katsuyama Stone Circle	-	○	-	-	-	Interpretation facility has not yet been built, but a part of the Hiroaki City Susono District Physical Culture Exchange Center is being used for the exhibition; scheduled to be built in FY2024 and FY2025, and to be put into service in FY2026.
015	Takasago Burial Site	○	○	-	○	○	
016	Kamegaoka Burial Site	○	○	-	-	○	
017	Korekawa Site	○	○	○	○	○	Accessible toilet, rental wheelchairs, and baby strollers are available

Table 20 State of installation of convenience facilities etc. (related with Indicator VI-3)

**【State of installation of guidance signs in the region】**

	Name of component part	FY 2020	FY 2021	FY 2022	FY 2023	FY 2024	Year-on-year change
001	Odai Yamamoto Site	8	8	8	8	8	0
002	Kakinoshima Site	0	21	26	28	30	2
003	Kitakogane Site	4	11	11	14	14	0
004	Tagoyano Site	1	1	3	24	24	0
005	Futatsumori Site	15	30	44	43	43	0
006	Sannai Maruyama Site	67	67	98	98	98	0
007	Ofune Site	15	26	28	28	30	2
008	Goshono Site	3	3	3	3	3	0
009	Irie Site	2	2	2	2	8	6
010	Komakino Stone Circle	19	19	19	19	19	0
011	Isedotai Stone Circles	9	9	9	9	9	0
012	Oyu Stone Circles	8	8	8	8	8	0
013	Kiusu Earthwork Burial Circles	2	3	3	14	17	3
014	Omori Katsuyama Stone Circle	3	3	4	12	13	1
015	Takasago Burial Site	2	2	2	2	8	6
016	Kamegaoka Burial Site	1	1	3	24	24	0
017	Korekawa Site	29	29	38	38	38	0
	Total	188	243	309	374	394	20

Table 21 Training workshops about the property (related with Indicator VII-1)

Name	Date	Operating body	Number of participants	Summary
Jomon Prehistoric Sites in Northern Japan World Heritage Inscription Three Year Anniversary Forum in Aomori	27 July 2024	Jomon Sites World Heritage Headquarters	50	A forum held regarding the Jomon Prehistoric Sites in Northern Japan.
Jomon Prehistoric Sites in Northern Japan World Heritage Inscription Three Year Anniversary Forum in Nagoya	14 October 2024	Jomon Sites World Heritage Headquarters	500	A forum held regarding the Jomon Prehistoric Sites in Northern Japan.
Jomon Prehistoric Sites in Northern Japan World Heritage Inscription Three Year Anniversary Nagoya Forum JOMON Panel Exhibit	13–14 October 2024	Jomon Sites World Heritage Headquarters	1,000	A panel exhibition held in conjunction with a forum regarding the Jomon Prehistoric Sites in Northern Japan.
Jomon Prehistoric Sites in Northern Japan World Heritage Inscription Three Year Anniversary Forum in Tokyo	26 January 2025	Jomon Sites World Heritage Headquarters	600	A forum held regarding the Jomon Prehistoric Sites in Northern Japan.
Jomon of the North Panel Exhibition	① 9 July 2024 – 18 July 2024 ② 22 July 2024 – 26 July 2024 ③ 6 August 2024 – 14 August 2024 ④ 5 October 2024 – 27 October 2024 ⑤ 18 December 2024 – 17 January 2025	Hokkaido Iburi Regional Development Bureau	—	Panel exhibitions in public facilities, roadside service areas, etc. spreading knowledge of the Jomon Prehistoric Sites in Northern Japan and Iburi Subprefectural Jomon sites. ① Anis Noboribetsu ② Muroran Regional Government Office ③ Mitara Muroran Road Station ④ Former Etomo Elementary School ⑤ Tomakomai City Central Library ※ Visitor Numbers Not Counted
Jomon of the North Relay Exhibition 2024	① 15 June 2024 – 21 March 2025 ② 31 August 2024 – 31 January 2025	Hokkaido Department of Environment and Living, Cultural Affairs Bureau, Cultural Promotion Division	25,623	An exhibition displaying excavated artifacts with explanatory panels, with the goal of spreading awareness of the charm of Hokkaido's Jomon culture. ① Kushiro, ② Makubetsu
Iburi Jomon Stamp Rally	1 July 2024 – 30 November 2024	Hokkaido Iburi Regional Development Bureau	—	Organized with the purpose of having people visit Jomon prehistoric sites and related facilities, so that they can experience the value and charm of Jomon culture. ① Former Etomo Elementary School ② Noboribetsu Cultural Exchange Center "Kanto Rera" ③ Kitakogane Site Information Center ④ Irie Takasago Shell Midden Museum ⑤ Iburi Jomon Prehistoric Site Tour Participants ※ Visitor Numbers Not Counted
Jomon of the North Panel Exhibition	① 20–31 May 2024 ② 11–25 July 2024 ③ 20–27 September 2024 ④ 1–11 November 2024 ⑤ 15–24 January 2025 ⑥ 28 January–3 February 2025	Hokkaido Oshima Regional Development Bureau	—	Panel exhibitions in public facilities and commercial establishments introducing the characteristics of Jomon culture and prehistoric sites. ① Oshima Subprefecture Government Office ② Hakodate City Central Library ③ Goryokaku Tower ④ Tsugaru Strait Ferry Terminal ⑤ Hakodate Community Design Center ⑥ Nanairo-Nanae Road Station ※ Visitor Numbers Not Counted

Table 21 Training workshops about the property (related with Indicator VII-1)

Name	Date	Operating body	Number of participants	Summary
Jomon World Heritage Inscription Three Year Anniversary Forum Festival	15 July 2024	Hokkaido Department of Environment and Living, Cultural Affairs Bureau, Cultural Promotion Division	6,000	Talk events explaining the charm of World Heritage, Jomon-related hands-on experience programs, food and merchandise sales, etc. held in order to celebrate the three year anniversary of the Jomon Prehistoric Sites in Northern Japan's World Heritage inscription.
Iburi Jomon Sites Tour	8 August 2024	Hokkaido Iburi Regional Development Bureau	27	A bus tour for elementary school students attending after-school clubs in Tomakomai City, that included a visit to the Kitakogane and Irie Takasago shell middens and magatama making, with a goal of deepening understanding about the Jomon Prehistoric Sites.
Ishikari Jomon Relay Panel Exhibition	9 August 2024 – 19 November 2024	Ishikari Regional Development Bureau	8,900	A panel exhibition held in facilities within the Ishikari Subprefecture, with the goal of spreading awareness of Jomon culture and increasing Jomon fans.
Jomon Culture Hands-On Experience Booth	① 14 September 2024 ② 4 October 2024	Hokkaido Iburi Regional Development Bureau	45	A magatama-making experience booth set up at various events, with the goal of promoting knowledge of Jomon culture. ① Highway Show Area 2024 in Mt. Usu Service Area ② Muroan Culture Night 2024
World Heritage Children's Summit	29 November 2024	Hokkaido Board of Education	82	Presentations by child and student members of the organizations managing each site, about the studies and activities they have participated in.
Jomon Prehistoric Sites in Northern Japan Guide Training and Information Exchange Meeting	7 December 2024	Cultural Promotion Division, Cultural Affairs Bureau, Hokkaido Department of Environment and Living	36	A training session and information exchange meeting held with the purpose of improving the skills and increasing the unity of Hokkaido prefectural site volunteer guides.
Jomon Seminar in Makubetsu	18 January 2025	Cultural Promotion Division, Cultural Affairs Bureau, Hokkaido Department of Environment and Living	45	Lectures about World Heritage and Jomon culture.
Jomon Kids Seminar in Makubetsu	19 January 2025	Cultural Promotion Division, Cultural Affairs Bureau, Hokkaido Department of Environment and Living	6	Lectures about World Heritage and Jomon culture oriented for kids.
World Heritage Inscription Third Year Anniversary, Easy Smartphone Participation! Jomon Stamp Rally	April 2024 – October 2024	Aomori Prefectural Board of Education	2,880	A stamp rally within which participants used their smartphones (with GPS functions) and traveled around 8 Jomon sites and centers within Aomori Prefecture (2,880 participants groups).
Jomon World Heritage "Experience" Lecture	April 2024 – March 2025	Aomori Prefectural Board of Education	311	Lectures about World Heritage (held at 9 schools within Aomori Prefecture).
World Heritage Jomon Prehistoric Sites Guides Training Lecture	7 March 2025	Aomori Prefectural Board of Education	66	Lectures to train guides for the Jomon Prehistoric Sites in Northern Japan and Aomori Prefecture's 8 sites.
Lecture (World Heritage)	14 October 2024	Akita Prefectural Board of Education	90	Lecture on World Heritage and the Jomon Prehistoric Sites (held at Akita Arts Theatre Mille Has).

Table 21 Training workshops about the property (related with Indicator VII-1)

Name	Date	Operating body	Number of participants	Summary
Lecture (World Heritage)	4 November 2024	Akita Prefectural Board of Education	79	Lecture to boost interest in the Jomon period (held at Akita Arts Theatre Mille Has).
Akita Prefecture Buried Cultural Property Center Friday Lectures	① 7 June 2024 ② 6 December 2024	Akita Prefectural Board of Education	42	A lecture to boost interest in the prefecture's Jomon history (held at the Akita Prefecture Buried Cultural Property Center, ① 21 people, ② 21 people).
Volunteer Guide Exchange	14 November 2024	Kazuno Regional Development Bureau	21	Hands-on experiences and opinion exchanges for guides held at the Oyu Stone Circles Museum.
World Heritage Jomon Prehistoric Sites in Northern Japan PR Fair	26 August – 1 September 2024	Kazuno Regional Development Bureau	2,906	Panel exhibitions and pamphlet distribution at the Sendai Station Trip Concierge.
Shirakami-Sanchi and Beech Forest Culture Network Project	13–15 July 2024, 12–14 October 2024	Yamamoto Regional Development Bureau	130	Tourist experiences that link Shirakami-Sanchi to Jomon culture, etc. World Heritage panel exhibitions and pamphlet distribution held in partnership with roadside service stations (approximately 130 people).
World Heritage PR Panel Exhibition	◎ 26 April (Fri) – 7 May (Tue) Venue: Odate-Noshiro Airport ◎ 13 September (Fri) – 24 September (Tue) Venue: Odate-Noshiro Airport ◎ 5 October (Sat) – 14 October (Mon) Venue: Goshono Jomon Museum ◎ 7 February (Fri) – 17 February (Mon) Venue: Futatsui Roadside Station	Kazuno-Kitaakita Regional Development Bureau	Not counted	<ul style="list-style-type: none"> <li>• A panel exhibition held about the Oyu Stone Circles and Isedotai Site at nearby tourist facilities.</li> <li>• In some cases, panel exhibitions were held in cooperation with Shirakami-Sanchi (Yamamoto Regional Promotion Bureau).</li> <li>• A panel exhibition about Shirakami-Sanchi (Yamamoto Regional Promotion Bureau) and the Goshono Site (North Iwate Prefecture Regional Promotion Bureau) were also held at Odate-Noshiro Airport.</li> </ul>
Fall 2024 Chunichi Culture Center Lecture Special Lecture	November 2024 – January 2025 *13 December 2024 (Akita) 10 January 2025 (Iwate)	Joint Office for the Three Northern Tohoku Prefectures in Nagoya	63	A lecture series (4 lectures) held at a cultural center run by the Chunichi Newspaper Company with the theme "Jomon Prehistoric Sites in Northern Japan World Heritage Inscription Three Year Anniversary, The Sites' Value and Must-Know Charm." Following a request from the organizers, one of the lectures was led by a speaker from Akita Prefecture.
Tourism and Local Product PR Exhibition	2–31 March 2025	Joint Office of the Three Northern Tohoku Prefectures in Osaka	Not counted	A promotional showcase display about the three prefectures of northern Japan and pamphlet distribution in front of Kyoto Station (held at Kyo-Surugaya Building's underground area). One of the themes of the exhibit was Jomon sites.
World Heritage Traveling Panel Exhibition	June–December 2024	Iwate Prefecture	10,938	A panel exhibition promoting Iwate Prefecture's 3 World Heritage sites at 8 locations both within and outside of the prefecture.
World Heritage Festival	19–20 October 2024	Iwate Prefecture	1,000	A festival promotional event for Iwate Prefecture's 3 World Heritage sites. Festival activities included workshops, local arts performances, greetings from each site's mascot character, etc.
World Heritage Delivery Class	May–November 2024	Iwate Prefecture	1,111	Prefectural governors and/or officials going to elementary, junior high and high schools to give lessons on the 3 World Heritage Sites in Iwate Prefecture.
Guide Training Course	22 April 2024	Odai Yamamoto Site Promotion Team	8	Mumon-kan Museum guided tour, experiential learning and a Q&A session.

Table 21 Training workshops about the property (related with Indicator VII-1)

Name	Date	Operating body	Number of participants	Summary
Guide Training Course	8 July 2024	Odai Yamamoto Site Promotion Team	2	A training course taken place at the Odai Yamamoto Site (led by experienced guides), a guided tour of the Mumonkan Museum and a Q&A session.
Collection Exhibition "Hakodate's Cylindrical Earthenware Culture"	1 April 2024 – 23 June 2024	Hakodate City Museum	—	An exhibition focused on Jomon period cylindrical earthenware excavated in Hakodate City.
Hometown Study Promotion Project	1 April 2024 – 31 March 2025	Hakodate City Board of Education	1,528	"Jomon Experiential Learning" site tours held for 3rd graders from elementary schools within the city as part of the FY2024 Hometown Study Promotion Project. 39 schools from within the city participated.
Hakodate Well-Being App Hakobit (Kakinoshima Site)	1 April 2024 – 31 March 2025	'Hakodate Citizens' Health and Happiness University' Executive Committee (Secretariat: Hakodate City Department of Health and Welfare)	153	A walking course around the Kakinoshima Site using the health application Hakobit, a project of the "Hakodate Citizen Health University" which records user's steps walked and health condition.
Hakodate Well-Being App Hakobit (Ofune Site)	1 April 2024 – 31 March 2025	'Hakodate Citizens' Health and Happiness University' Executive Committee (Secretariat: Hakodate City Department of Health and Welfare)	66	A walking course around the Ofune Site using the health application Hakobit, a project of the "Hakodate Citizen Health University" which records user's steps walked and health condition.
Golden Week Limited Time "Bookmark Making"	3–5 May 2024	Hakodate Jomon Culture Center	90	Using twisted rope to make original bookmarks.
Jomon Hands-On Lecture "Jomon Dokki Making"	11 May 2024	Hakodate Jomon Culture Center	7	A class where participants baked cookies in the shape of earthenware fragments excavated in the Minami-Kayabe area, in order to boost interest in Jomon earthenware.
Delivery Lecture World Heritage Jomon Prehistoric Sites in Northern Japan	25 June 2024	Hakodate City Planning Department	36	A lecture by a cultural properties expert at a city high school. Student-led group discussions and presentations were held after the lecture.
Jomon Hands-On Lecture "Learning About Jomon Period Fishing - Deer Antler Fish Hook Making"	29 June 2024	Hakodate Jomon Culture Center	12	A lecture where participants learn about Jomon era fishing tools by making their own fish hooks from deer antlers.
Saitama Aeon Lake Town mori "Hokkaido Fair" Exhibition	2–7 July 2024, 25 September–1 October 2024	Hakodate City Economic Affairs Department	—	A Jomon promotional booth stationed at the "Hokkaido Fair" in Saitama Aeon Lake Town mori, where novelty items such as pins and clear files were handed out.
Summer Vacation Research Program "Let's Make Stone Tools Out of Obsidian"	1 August 2024	Hakodate City Museum	15	A class where participants learned about prehistoric tool-making and hunting by making stone tools using the same methods as Stone Age and Jomon period people.
Jomon Hands-On Lecture "Learning About Jomon Period Homes (Pit Dwelling Diorama Making)"	3 August 2024	Hakodate Jomon Culture Center	8	A class where participants learn about Jomon life through pit dwelling diorama making (reconstructed framework of a pit dwelling).
Summer Vacation Research Program "Let's Use Deer Antlers to Make Jomon Era Fish Hooks"	6 August 2024	Hakodate City Museum	12	Using deer antlers to make fish hooks like those used in the Jomon period.
7th Annual Jomon Drawing Contest	23–3 September 2024	Hokkaido Shimbun Hakodate Branch (Organiser), Hakodate City, Hakodate City Board of Education, Hokkaido Oshima General Promotion Bureau (Co-organisers)	153	A drawing contest for elementary school students to celebrate the three year anniversary of the World Heritage inscription of the Jomon Prehistoric Sites in Northern Japan.
Jomon Hands-On Lecture "Summer Jomon Dyeing"	24 August 2024	Hakodate Jomon Culture Center	9	A class where participants used dyes made of hardy kiwi leaves or stems to dye.
Hakodate Exam Passer Club - Tomoe Cram School "Jomon Culture of Southern Hokkaido"	30 August 2024	Hakodate City Museum	26	A preparation course for the "Hakodate Exam" focused on the theme of "Jomon Culture of Southern Hokkaido."
Jomon Hands-On Lecture "Jomon Earthenware Making"	7–8 September 2024	Hakodate Jomon Culture Center	12	Making earthenware based on earthenware artifacts unearthed at Hakodate City Jomon sites.

Table 21 Training workshops about the property (related with Indicator VII-1)

Name	Date	Operating body	Number of participants	Summary
Delivery Lecture World Heritage Jomon Prehistoric Sites in Northern Japan	24 September 2024	Hakodate City Planning Department	15	A lecture by a cultural properties expert, as per request by the Hakodate Consumers' Association (Hakodate Consumers' University).
7th Annual Jomon Drawing Contest Awards Ceremony and Exhibition	5–18 October 2024	Hokkaido Shimbun Hakodate Branch (Organiser), Hakodate City, Hakodate City Board of Education, Hokkaido Oshima General Promotion Bureau (Co-organisers)	—	An awards ceremony held at the Tsugaru Strait Ferry Terminal for winners of the drawing contest held in August–September, as well as an exhibition of the winning and competing pieces.
Jomon Prehistoric Sites in Northern Japan' World Heritage Inscription Three Year Anniversary Hakodate Jomon Festival 2024 in Kakinoshima	6 October 2024	Minami-Kayabe Jomon Festival Executive Committee (Organiser), Hakodate City Board of Education (Co-organiser), Hakodate City and others (Supporters)	1,100	An event to celebrate the three year anniversary of World Heritage inscription held at the Kakinoshima Site. Activities included stage events, Jomon experiences, and merchandise sales. At the same time, a World Heritage stamp rally took place, and visitors to the Ofine site were counted.
Jomon Hands-On Lecture “Let's Try Hugging the Hollow Dogu”	6 October 2024	Hakodate Jomon Culture Center	96	A chance to touch a replica of the Hollow Dogu, in order to understand the high level techniques used to make dogu.
Delivery Lecture World Heritage Jomon Prehistoric Sites in Northern Japan	24 October 2024	Hakodate City Planning Department	30	A lecture by a cultural properties expert, as per request by the Hiyoshi-machi Home Care Welfare Committee.
Jomon Hands-On Lecture “Obsidian Arrowhead Making”	9 November 2024	Hakodate Jomon Culture Center	10	A class where participants learned about Jomon period hunting and stone-tool making techniques by carving obsidian to make arrowheads.
Hakodate Collection 2024	1 December 2024	Hakodate City Women's Council (Organiser), Hakodate City (Co-organiser)	—	A Jomon promotional booth stationed at a universal fashion show held at city hall, where novelty items such as pins, clear files and leaflets were handed out.
Jomon Culture Special Research Result Presentation Exhibition	13 December 2024 – 31 March 2025	Hakodate Jomon Culture Center	—	A mini exhibition about special research results held at the Hakodate Jomon Culture Center.
Curator Ramblings ① “This and That About Jomon Period Life and Culture”	15 December 2024	Hakodate City Museum	9	A lecture focused on Hakodate sites that explained about Jomon period life and spiritual culture.
Winter Vacation Limited Time Jomon Hands-On Learning “Jomon Experience・Dogu Making”	11–12 January 2025	Hakodate Jomon Culture Center	15	A class where participants made slab-shaped dogu by shaping clay along the form of a laminated photo of a slab-shaped dogu.
Jomon Hands-On Lecture “Chocolate Stone Tool Making”	8 February 2025	Hakodate Jomon Culture Center	5	A class where participants learned about Jomon period tools by making chocolate shaped using molds taken from real stone tools.
Spring Vacation Limited Time Event “Jomon World Heritage Quiz Rally”	20–30 March 2025	Hakodate Jomon Culture Center	342	An event where participants explore the exhibition to answer a quiz about Jomon World Heritage.
Date City History and Culture Lecture	27 April, 18 May, 22 June, 27 July, 23 August, 28 September and 24 November 2024	Date City Board of Education	166	A lecture with the aim of participant rediscovery of Date City history and culture through the city's historical properties such as the Kitakogane Site.
Date Funkawan Bay Jomon Festival Symposium “Humanity's 'Great Journey' as Understood Through Prehistoric DNA”	19 October 2024	Date Funka-wan Jomon Festival Executive Committee	100	A symposium introducing the value of the Kitakogane Site (and Jomon people).
Date Funkawan Bay Jomon Festival	20 October 2024	Date Funka-wan Jomon Festival Executive Committee	700	A hands-on learning event held at the Kitakogane Site.
Ancient Environment Workshop “Jomon Forest Making”	20 October 2024	Date City Board of Education	12	A workshop where participants observed the trees and grasses of the Jomon forest located within the Kitakogane Site Park.
Special Exhibition “World Heritage Kitakogane Site”	10 December 2024 – 23 March 2025	Date City Board of Education	3,303	An exhibition about the Kitakogane Site and World Heritage held at the Date History and Culture Museum.
Animal Archaeology Seminar & Workshop	15 February 2025	Date City Board of Education	77	A workshop and lecture using artifacts unearthed at the Kitakogane Site and other sites.
“All About Tsugaru's Cultural Properties” Delivery Lecture	29 May – 12 November 2024	Tsugaru City Board of Education	343	Lectures about the Jomon Prehistoric Sites in Northern Japan and related properties (held at 6 elementary and middle schools within the city).

Table 21 Training workshops about the property (related with Indicator VII-1)

Name	Date	Operating body	Number of participants	Summary
Summer Vacation Hands-On Lecture "Mini Earthenware Making Experience"	3 August 2024	Tsugaru City Board of Education	20	A hands-on lecture where participants learned about the value of artifacts through earthenware making (aimed at elementary and middle school students within the city).
Summer Vacation Hands-On Lecture "Jomon Site Junior Guide Experience"	6 August 2024	Tsugaru City Board of Education	3	After learning about the purpose of the site and guide activities, participants followed examples from Tsugaru Jomon Site Guide Staff and experienced being site guides.
Jomon Site Information Center	10 April – 30 November 2024	Tsugaru City Board of Education	—	Installation of information centers at parking lot adjacent to site properties, where panel displays, videos, etc. explain the sites' value.
Delivery Lecture	10 September 2024	Shichinohe Town Board of Education	39	A lecture about Jomon prehistoric sites and the Futatsumori Shell Midden (held at 1 elementary school within the town).
Deer Antler Accessory Making	14 December 2024	Shichinohe Town Board of Education	7	A hands-on lecture where participants made magatama, twisted strings, shijimi clam charms, earthenware magnets, shell photo frames, deer antler accessories, and Jomon clothing.
Kokka Cookie and Dokki Making	13 January 2025	Shichinohe Town Board of Education	26	A teacher was invited to lead the baking of cookies in the shape of the deer antler comb excavated in the Futatsumori Shell Midden.
Futatsumori Site Experience Festival	16 February 2025	Shichinohe Town Board of Education	221	Hands-on courses, guided tours, etc. held at the Futatsumori Site.
Jomon Hands-On Learning 1 "Let's Make Fish Hooks and Use Them to Fish"	11 May 2024	Sannai Maruyama Jomon Culture Center	16	Using deer antlers to make fish hooks, and then attempting to fish using the participant-made hooks.
Jomon Hands-On Learning 2 "Let's Try Excavating"	26 July 2024	Sannai Maruyama Jomon Culture Center	16	Experiencing an excavation within the Sannai Maruyama Site.
Jomon Hands-On Learning 3 "Let's Make Earthenware ①"	17 August 2024	Sannai Maruyama Jomon Culture Center	18	Making Jomon earthenware out of clay.
Jomon Hands-On Learning 4 "Let's Make Shell Accessories"	7 September 2024	Sannai Maruyama Jomon Culture Center	16	Making accessories out of shells.
Jomon Hands-On Learning 5 "Let's Make a Dogu"	5 October 2024	Sannai Maruyama Jomon Culture Center	10	Making a dogu out of clay.
Jomon Hands-On Learning 6 "Let's Make Earthenware ②"	19 October 2024	Sannai Maruyama Jomon Culture Center	Cancelled	The event was cancelled for the public, but staff open field fired previously made earthenware.
Jomon Hands-On Learning 7 "Let's Make Jomon Period Needles"	9 November 2024	Sannai Maruyama Jomon Culture Center	18	Making needles out of boar ribs.
Jomon Hands-On Learning 8 "Let's Make Stone Accessories"	21 December 2024	Sannai Maruyama Jomon Culture Center	18	Making accessories out of stone.
San-maru Jomon Studies Lecture 1 "Fishing and Hunting in Sannai Maruyama"	25 May 2024	Sannai Maruyama Jomon Culture Center	28	A Sannai Maruyama Site Center specialist explained about the fishing and hunting that took place within Sannai Maruyama.
San-maru Jomon Studies Lecture 2 "Fishing and Hunting in Funkawan Bay"	8 June 2024	Sannai Maruyama Jomon Culture Center	30	A staff member of the Date City Board of Education explained about the fishing and hunting that took place within Funkawan Bay.
San-maru Jomon Studies Lecture 3 "Exchange Between Hokkaido and Honshu 1"	28 July 2024	Sannai Maruyama Jomon Culture Center	27	The director of the Sannai Maruyama Site Center explained about exchanges that took place between Hokkaido and Honshu.
San-maru Jomon Studies Lecture 4 "Exchange Between Hokkaido and Honshu 2"	24 August 2024	Sannai Maruyama Jomon Culture Center	27	A special researcher from the Hokkaido Department of the Environment and Life, Culture Bureau explained about exchanges that took place between Hokkaido and Honshu.
San-maru Jomon Studies Lecture 5 "Let's Enjoy Artifacts"	16 November 2024	Sannai Maruyama Jomon Culture Center	26	The vice-director of the Sannai Maruyama Site Center explained about the site's artifacts.

Table 21 Training workshops about the property (related with Indicator VII-1)

Name	Date	Operating body	Number of participants	Summary
Briefing on Special Historic Site Sannai Maruyama Site	8 March 2025	Sannai Maruyama Jomon Culture Center	39	A briefing reporting results of archaeological excavations and the special research promotion project.
Special Exhibition "The Bountiful Sea and Jomon —Mutsu Bay and Sannai Maruyama—"	13 April 2024 – 23 June 2024	Sannai Maruyama Jomon Culture Center	20,328	An exhibition introducing the various species living in Mutsu Bay and the rich lifestyle of the Jomon period through displays of fish bones, shells, fishing tools, earthenware used for salt making, etc.
Special Exhibition "Jomon Tied by the Sea —Tsugaru Strait and Sannai Maruyama—"	12 July 2024 – 23 September 2024	Sannai Maruyama Jomon Culture Center	25,567	An exhibition introducing exchanges and trade across the Tsugaru Strait, and connections between the Aomori Prefecture and Hokkaido, through displays of Jomon artifacts excavated in both regions.
Sannai Maruyama Site Preservation Decision 30 Year Anniversary Exhibition	20 July 2024 – 2 March 2025	Sannai Maruyama Jomon Culture Center	145,677	A panel exhibition introducing the history of the Sannai Maruyama Site from the year it was first decided to be preserved to the present day.
Exhibition "Life of the Jomon People, As Understood From Clothing, Food, and Dwellings"	26 October 2024 – 9 March 2025	Sannai Maruyama Jomon Culture Center	35,619	An exhibition introducing Jomon period clothing, food and dwellings through displays of artifacts excavated at the Sannai Maruyama Site.
Sannai Maruyama Site Preservation Decision 30 Year Anniversary Symposium "The Summer of 1994"	15 September 2024	Sannai Maruyama Jomon Culture Center	44	A keynote lecture, three presentations and a panel discussion held in commemoration of the 30 year anniversary of the decision to preserve the Sannai Maruyama Site.
Jomon Satoyama Hands-On Learning	1 September, 29 September, 5 October and 2 November 2024	Sannai Maruyama Jomon Culture Center	56	A series of 4 community participation-based workshops that involved "Jomon" satoyama plant growing and observing, chestnut collecting, pruning, cutting, etc.
Jomon Village Making Experience	27 July, 23 September, 6 October, 20 October and 3 November 2024	Sannai Maruyama Jomon Culture Center	73	An experience focused on pit dwellings, from their dismantling, the collection and processing of raw materials, and finally to the assembly of the materials into a building. (5 total events)
Excavation #49 Site Guide	1 July 2024 – 13 September 2024	Sannai Maruyama Jomon Culture Center	946	An explanation of the No.49 excavation.
Excavation #49 Site Presentation	14 September 2024 – 16 September 2024	Sannai Maruyama Jomon Culture Center	260	An explanation of the results of the No.49 excavation.
Jomon Spring Festival	20 April 2024 – 21 April 2024	Sannai Maruyama Jomon Culture Center	3,935	An event to deepen participant understanding of the Sannai Maruyama Site and its value, through opportunities to touch unearthed earthenware, experience excavating, etc.
Jomon Summer Festival	20 July 2024 – 21 July 2024	Sannai Maruyama Jomon Culture Center	8,289	An event to deepen participant understanding of the Sannai Maruyama Site and its value, through opportunities to touch unearthed earthenware, experience excavating, etc.
San-maru JOMON Day	14 September 2024 – 16 September 2024	Sannai Maruyama Jomon Culture Center	7,314	An event to deepen participant understanding of the Sannai Maruyama Site and its value, through opportunities to touch unearthed earthenware, experience how cooking was done at the time, etc.
Jomon Winter Festival	1 February 2025 – 2 February 2025	Sannai Maruyama Jomon Culture Center	2,754	An event to deepen participant understanding of the Sannai Maruyama Site and its value, through opportunities to touch unearthed earthenware, etc.
World Heritage Inscription Three Year Anniversary Lecture	27 July 2024	Ichinohe Town Board of Education	30	A lecture held by Chiba University professor Akinori Abe.
World Heritage Inscription Three Year Anniversary Special Exhibition "Deciphering the Goshono Site"	19 October 2024 – 24 November 2024	Ichinohe Town Board of Education	1,716	An exhibition introducing the value and charm of the Goshono Site from 3 perspectives (analysis of the site structure and artifacts, a comparison to other sites in the area, and a reconstruction of a pit house with an earthen roof), based on results of excavations and research.
Goshono Jomon WEEK 2024	19–27 October 2024	Iwate Prefecture Northern Regional Development Bureau	3,537	World Heritage inscription three year anniversary exhibition, special exhibition gallery talks, Iwate World Heritage Festival, Iwate Goshono Site Open School, You Need to Touch Crafts to Understand Them, Happy Walk 2024, Joboji laquer panel exhibition, Jomon school lunch, hands-on indigo dyeing, town resident seminar Kozuya course "Iwate's Jomon Research Began In Kozuya!", nighttime park opening, Goshono Site night tour, guided expansions of reconstructed pit dwellings, a relaxing Saturday "Jomon Walk" hosted by IBC Radio's Hiroki Kamiyama, Fall Jomon Satoyama Observation Meeting, and a journalist experience at the Goshono Jomon Museum!
Exciting Cultural Property Seminar	17 August 2024 – 22 March 2025 (5 sessions in total)	Ichinohe Jomon Satoyama Club, Ichinohe Town Board of Education	97	A lecture focused on Jomon period sites, etc. located in Iwate and Akita prefectures.
FY2024 Research Results Briefing	22 February 2025	Ichinohe Town Board of Education	112	A presentation of results from research about cultural properties located within the Goshono Site or Ichinohe Town.
Children's Day Jomon Play Festa in Toyako	5 May 2024	Toyako Town Board of Education	76	Magatama making, pit dwelling diorama making, etc. experiences held with the goal of promoting learning about the Jomon era while having fun.

Table 21 Training workshops about the property (related with Indicator VII-1)

Name	Date	Operating body	Number of participants	Summary
Archaeology Lectures in Collaboration with Town Schools	May–November 2024	Toyako Town Board of Education	154	Lectures, hands-on learning programs, and extracurriculars held at schools within town.
Hands-On Jomon Earthenware Making	8 June 2024	Toyako Town Board of Education, Jomon City Summit in Toyako Committee, Aputa Furenai Association, TOYAKO Jomon Guides Association	27	Learning about Jomon period crafts techniques through making one's own Jomon earthenware.
Volunteer Guide Course	16 June 2024	Toyako Town Board of Education, TOYAKO Jomon Guides Association	7	A course held to educate site guides.
Jomon Lecture Series	14 July 2024 25 August 2024 29 March 2025	Toyako Town Board of Education, Jomon City Summit in Toyako Committee, Aputa Furenai Association, TOYAKO Jomon Guides Association	112	A lecture series that focused on Jomon people's exchanges, Jomon people's lives as can be understood from shell middens, and World Heritage and its interpretation in Thailand.
Toyako Jomon Festival	15 July 2024	Toyako Town Board of Education, Jomon City Summit in Toyako Committee, Aputa Furenai Association, TOYAKO Jomon Guides Association	230	An event to deepen participant understanding about the Irie Takasago Shell Midden through Jomon experiences that anyone can enjoy.
Summer Vacation Jomon Experience	27 July – 4 August 2024	Toyako Town Board of Education	21	Free magatama and Jomon card making courses as support for elementary and middle school students who want to self-study over summer break.
Night Museum	12 August 2024	Toyako Town Board of Education, Jomon City Summit in Toyako Committee, Aputa Furenai Association, TOYAKO Jomon Guides Association	17	Experiencing the nighttime life of Jomon people at a reconstructed pit dwelling.
Jomon Prehistoric Sites in Northern Japan” Panel Exhibition	14 September – 8 October 2024	Toyako Town Board of Education, Jomon City Summit in Toyako Committee, Aputa Furenai Association, TOYAKO Jomon Guides Association	50	A panel exhibition about the Jomon Prehistoric Sites in Northern Japan held in conjunction with the Jomon City Summit.
Jomon City Summit in Toyako	7–8 October 2024	Toyako Town Board of Education, Jomon City Summit in Toyako Committee, Aputa Furenai Association, TOYAKO Jomon Guides Association	411	Opinion exchange and excursions related to city-planning centered on the utilization of Jomon culture.
Cultural Property Fire Prevention Day	25 January 2025	Toyako Town Board of Education, Aputa Furenai Association	25	Evacuations, fire drills, and Jomon experiences (dogu making) held in conjunction with Cultural Heritage Fire Prevention Day.
Hometown Education and Training Course	22 October 2024	Komakino Stone Circle Preservation and Utilization Council (General Incorporated Association)	35	Lecture for new teachers.
Archaeology Classroom “Having Fun Learning About Jomon Period Burials”	26 October 2024	Aomori City	27	Lecture for city residents.
Aomori City Citizens' School Lecture	6 November 2024	Aomori City	13	Lecture for city residents.
Jomon Salmon Comeback	5 April 2024	Kitaakita City	70	Releasing salmon fry into the Yuguruma River, which flows just below the hill where the site is located.
English Guides	28–29 July 2024	Kitaakita City	12	Workshop to train junior high and high school students on giving guided tours of the Isedotai Stone Circles in English.
Isedotai Stone Circles Junior Symposium	1 December 2024	Kitaakita City	60	Activity reports from Isedotai Stone Circle junior guides and looking back on the 10 years since junior guides were first implemented.
FY 2024 Isedotai Jomon Center Lectures	25 January and 15 February 2025	Kitaakita City	136	Lectures held about the changes in dogu throughout the Jomon period, and about the tourism utilization of Jomon sites.

Table 21 Training workshops about the property (related with Indicator VII-1)

Name	Date	Operating body	Number of participants	Summary
Introductory Workshop for New Guides	21 April 2024 – 6 October 2024 (2 sessions in total)	Oyu Stone Circles Museum	3	Lecture to train new guides for archaeological sites.
Skill Development Workshop for Guides	31 October 2024 – 20 March 2025 (4 sessions in total)	Oyu Stone Circles Museum	44	Lectures to train existing guides of archaeological sites to improve their skills.
Guide Professional Workshops	3 March 2025	Oyu Stone Circles Museum	10	Lectures held for site guides, by professional guides.
Oyu Stone Circles Museum Lecture	14 December 2024	Oyu Stone Circles Museum	35	① The Latest in Archaeological Research Based on Chemical Analysis of Stone Materials ② All About the Stone Used for Ground Stones at the Oyu Stone Circles and in Tohoku
Delivery Lecture Series	5 July 2024 – 12 September 2024 (3 sessions in total)	Kazuno City Board of Education	117	Lectures on World Cultural Heritage and the Oyu Stone Circles held by a lecturer from the Oyu Stone Circles Museum. The lectures also included a hands-on Jomon earthenware experience.
Public Lecture "About the Excavations and Archaeological Site Development of the Kiusu Earthwork Burial Circles"	30 November 2024	Chitose City Board of Education	34	An explanation about the Kiusu Earthwork Burial Circles' #8 survey and development, by a Chitose City Board of Education staff member in charge of the site's National Historic Site inscription.
Kiusu Earthwork Burial Circles Guided Tour	12 May, 26 May, 9 June, 15 June, 27 July, 24 August, 8 September, 13 October, 26 October and 10 November 2024	Chitose City Board of Education	173	Visits to the Kiusu Earthwork Burial Circles and other places, such as the Chitose City Buried Cultural Properties Center, and other historic sites and museums within and outside of the city, guided by the staff of the Chitose City Buried Cultural Properties Center or volunteer guides. (10 times in total)
Hands-On Class "Let's Make a Magatama!"	14 July 2024, 11 August 2024, 10 November 2024, 12 January 2025, 9 February 2025, 9 March 2025	Chitose City Board of Education	120	A class where participants use materials such as talc and amber to make their own magatama. (6 times in total)
Hands-On Class "Let's Make Jomon Earthenware!"	14 September 2024, 19 October 2024	Chitose City Board of Education	16	A course where participants used clay to make Jomon earthenware and then open field fired their pieces. (2 part course)
Hands-On Class "Let's Make Stone Tools!"	8 December 2024	Chitose City Board of Education	10	A course where participants used obsidian to make stone tools (arrowheads).
Hands-On Class "Let's Learn About the Jomon Forest!"	29 June 2024	Chitose City Board of Education	8	Making tree nameplates at the Bibikai Shell Midden.
Hands-On Class "Jomon Festival"	28 September 2024	Chitose City Board of Education	277	An event for participants to experience Jomon cultural knowledge and technology through magatama making, miniature dogu making, stone tool making, fire making, acorn cookie baking, etc.
Lectures about Jomon for Children	① 16 July 2024, ② 25 September 2024, ③ 11 October 2024	Hirosaki City	36	Program for Susono Elementary School 6th graders. The program included: ① a delivery lecture, ② a site field trip, and ③ a pottery-making experience.
Elementary School Site Field Trip	May–November 2024	Hirosaki City	344	Field trips held for 5th and 6th graders from elementary schools within the city.
Omori-Katsuyama Jomon Festival	6 August 2024	Hirosaki City	126	Tours of the site, quiz rallies, etc.
Winter Solstice Monitor Tour	22 December 2024	Hirosaki City	12	A tour held on winter solstice during which participants could watch the evening sun set behind Mt. Iwaki.

Table 21 Training workshops about the property (related with Indicator VII-1)

Name	Date	Operating body	Number of participants	Summary
Korekawa Jomon Museum Archaeology Lecture "Deciphering Jomon Period Plant Use"	11 May 2024, 15 June 2024, 6 July 2024	Korekawa Archaeological Institution: Korekawa Jomon Museum	155	① The Secrets of Jomon Period Lacquerware as Understood through X-Ray CT Scans, ② Weaving Plants - About Akita Prefecture Woven Artifacts - , ③ Korekawa Jomon People's Plant Use as Understood Through New Technologies
Korekawa Jomon Museum Archaeology Lecture "Dogu in the Second-Half of the Jomon Period"	14 December 2024, 18 January 2025, 8 February 2025	Korekawa Archaeological Institution: Korekawa Jomon Museum	136	① The Background and Evolution That Led to the Crouched Dogu, ② "The Masked Goddess" and City-Planning Utilizing Ropes, ③ About Hakodate's Dogu -Focusing on the Hollow Dogu-
Special Exhibition Archaeology Lecture	31 August 2024	Korekawa Archaeological Institution: Korekawa Jomon Museum	75	Describing the Jomon period.
Exhibition Archaeology Lecture	26 October 2024	Korekawa Archaeological Institution: Korekawa Jomon Museum	58	The special world of the Jomon earthenware excavated from Kazahari Site #1.
Lecture	6 September 2024	Hachinohe City Oumei University	76	Jomon period and the Korekawa Site.
The Open University of Japan's Second Semester In-Person Course, "Jomon Archaeology of the Korekawa Site"	16-17 November 2024	The Open University	29	"Jomon Earthenware Making," "Jomon Period Lacquer Culture," "World Heritage List inscription and the Jomon Prehistoric Sites in Northern Japan."
Delivery Lecture	11 July 2024	Hachinohe Municipal Konan Primary School	31	World Heritage Korekawa Stone Age Site
FY2024 Buried Cultural Properties Preservation Administration Workshop	19 September 2024	Agency for Cultural Affairs	670	Korekawa Stone Age Site
Hachinohe Regional Society Study Club Lecture	25 September 2024	Hachinohe Regional Society Research Group	20	Jomon Period Lifestyle and Food Culture in the Hachinohe Region
Hirakawa Cultural Property Lecture	12 October 2024	Hirakawa City Board of Education	14	World Heritage Korekawa Stone Age Site Jomon Beauty and Plant Use
Special Exhibition Commemorative Lecture	12 October 2024	Tokamachi City Museum	24	Jomon Lacquerware Village - Korekawa Stone Age Site -
History Lecture	21 November 2024	Hachinohe Municipal Negishi Community Centre	17	Korekawa Stone Age Site and Kazahari Site #1
History Lecture	15-16 March 2025	Hachinohe City Korekawa Archaeological Institution	36	Hands-on workshop where participants wove craft tape following the model of rantai woven lacquerware excavated from the Nakai Site.
Total			332,159	

Table 22 Guidance facilities (related with Indicator VII-2)

Name of component part		Name of facility	Year of establishment (year/month)	Note
001	Odai Yamamoto Site	Odai Yamamoto Jomon Museum	2024/4	Exhibition graphics are available in English (via QR code)
002	Kakinoshima Site	Hakodate Jomon Culture Center	2011/10	Hakodate Jomon Culture Center (1 October 2011) Some information boards include English translations.
003	Kitakogane Site	Kitakogane Site Information Center	2001/6	
004	Tagoyano Site	Tsugaru City Jomon Dwelling Museum Kamegaoka Archaeology Collections	1987/3	21 April 2023: Reopening
005	Futatsumori Site	Futatsumori Shell Midden Museum	2021/4	Futatsumori Shell Midden Museum (opened in April 2021)
006	Sannai Maruyama Site	Sannai Maruyama Jomon Culture Center	2019/4	30 November 2002: Opening of Sannai Maruyama Jomon Culture Center
007	Ofune Site	Hakodate Jomon Culture Center	2011/10	Hakodate Jomon Culture Center (1 October 2011) Some information boards include English translations.
008	Goshono Site	Goshono Jomon Museum	2002/4	Gosono Jomon Museum (opened on 27 April 2002)
009	Irie Site	Irie Takasago Museum	1998/4	Irie Takasago Museum (established on 27 April 1998) English-language information panels (installed on 21 July 2021)
010	Komakino Stone Circle	Aomori City Komakino Stone Circle Preservation Museum	2015/4	
011	Isedotai Stone Circles	Isedotai Jomon Museum	2016/4	
012	Oyu Stone Circles	Oyu Stone Circles Museum	2002/4	Oyu Stone Circles Museum (established in April 2002)
013	Kiusu Earthwork Burial Circles	Kiusu Earthwork Burial Circles Historic Site Guidance Center	2010/4	Chitose City Buried Cultural Properties Centre: Established on 1 April 2010; 60% of signage is in multiple languages
014	Omori Katsuyama Stone Circle	Susono District Physical Education and Cultural Exchange Center	—	Part of the Susono District Physical Culture Exchange Center is used (established in November 2003; exhibition refurbishment carried out in February 2018; renovation work on the Interpretation facility to be carried out in 2024–2025)
015	Takasago Burial Site	Irie Takasago Museum	1998/4	Irie Takasago Museum (established on 27 April 1998) English-language information panels (installed on 21 July 2021)
016	Kamegaoka Burial Site	Tsugaru City Kizukuri Kamegaoka Archaeological Museum	1979/12	
017	Korekawa Site	Korekawa Archaeological Institution	2011/7	Korekawa Archaeological Institution: Hachinohe City Centre for Buried Cultural Properties (established on 10 July 2011)

Table 23 Information provision by pamphlets (related with Indicator VII-3)

Name/title	Prepared (revised) by	Format/volume	Printed copies	Language	Outline
Guidebook of Jomon Prehistoric Sites in Northern Japan - Whole Area Navigation 2024	Headquarters for World Heritage Jomon Prehistoric Sites	A4, 28 pages	29,500	Japanese	Pamphlet introducing the overviews, highlights, events, etc. of the component parts of the Jomon Prehistoric Sites in Northern Japan.
Pamphlet, “Jomon Prehistoric Sites in Northern Japan” (Japanese)	Headquarters for World Heritage Jomon Prehistoric Sites	A4, 16 pages	38,750	Japanese	Pamphlet introducing the Outstanding Universal Value of the Jomon Prehistoric Sites in Northern Japan and overviews of their component parts.
Pamphlet, “Jomon Prehistoric Sites in Northern Japan” (English)	Headquarters for World Heritage Jomon Prehistoric Sites	A4, 16 pages	10,000	English	Pamphlet introducing the Outstanding Universal Value of the Jomon Prehistoric Sites in Northern Japan and overviews of their component parts.
Pamphlet, “Jomon Prehistoric Sites in Northern Japan” (Chinese (Traditional and Simplified))	Headquarters for World Heritage Jomon Prehistoric Sites	A4, 16 pages	6,500	Chinese	Pamphlet introducing the Outstanding Universal Value of the Jomon Prehistoric Sites in Northern Japan and overviews of their component parts.
Pamphlet, “Jomon Prehistoric Sites in Northern Japan” (Korean)	Headquarters for World Heritage Jomon Prehistoric Sites	A4, 16 pages	2,000	Korean	Pamphlet introducing the Outstanding Universal Value of the Jomon Prehistoric Sites in Northern Japan and overviews of their component parts.
Pamphlet, “Jomon Prehistoric Sites in Northern Japan” (French)	Headquarters for World Heritage Jomon Prehistoric Sites	A4, 16 pages	800	French	Pamphlet introducing the Outstanding Universal Value of the Jomon Prehistoric Sites in Northern Japan and overviews of their component parts.
Jomon Prehistoric Sites in Northern Japan - Handy Pamphlet (Individual Site Edition)	Headquarters for World Heritage Jomon Prehistoric Sites	A4 landscape (2/3 size), 20 pages	17,670	Japanese and English	Pamphlet introducing overviews of the component parts of the Jomon Prehistoric Sites in Northern Japan.
Jomon Prehistoric Sites in Northern Japan - Handy Pamphlet (Combined Edition)	Headquarters for World Heritage Jomon Prehistoric Sites	A4 landscape (2/3 size), 148 pages	1,800	Japanese and English	Pamphlet introducing overviews of the component parts of the Jomon Prehistoric Sites in Northern Japan.
Jomon Prehistoric Sites in Northern Japan - JOMON MAP (Japanese)	Headquarters for World Heritage Jomon Prehistoric Sites	A1, double-sided colour	20,000	Japanese	Pamphlet introducing the locations of the component parts of the Jomon Prehistoric Sites in Northern Japan.
Jomon Prehistoric Sites in Northern Japan - JOMON MAP (English)	Headquarters for World Heritage Jomon Prehistoric Sites	A1, double-sided colour	5,000	English	Pamphlet introducing the locations of the component parts of the Jomon Prehistoric Sites in Northern Japan.
Going to Jomon with Jomorun	Hokkaido Department of the Environment and Life, Culture Bureau, Culture Promotion Division	B5 hardback, 24 pages (including cover)	1,000	Japanese	Booklet introducing the charm of the Jomon Prehistoric Sites in Northern Japan, as well as the reason one would choose it as a educational travel destination.
Jomon Manual	Hokkaido Department of the Environment and Life, Culture Bureau, Culture Promotion Division	A5 format, 18 pages	5,100	Japanese	Small booklet explaining about World Heritage and Jomon culture.

Table 23 Information provision by pamphlets (related with Indicator VII-3)

Name/title	Prepared (revised) by	Format/volume	Printed copies	Language	Outline
Oshima Jomon Guide	Hokkaido Oshima General Subprefectural Bureau	A5 format, 51 pages	400	Japanese	Introducing Oshima's sites, highlights and Jomon related facilities in order to spread knowledge about the charm of Jomon in the Oshima region.
Aomori Jomon Station JomoJomo Pamphlet	Aomori Prefectural Board of Education	A4, double-sided colour	36,700	Japanese	Pamphlet introducing Aomori Prefecture's center for Jomon site related information.
Jomon in Akita	Akita Prefectural Board of Education	A5, 24 pages	8,500	Japanese	Study material (supplementary reader) for 6th graders.
Odai Yamamoto Site Facility Mumon-kan Museum Leaflet	Sotogahama Town Board of Education	A4, double-sided, tri-fold	10,000	Japanese	Leaflet introducing the Odai Yamamoto Site Facility Mumon-kan Museum.
Odai Yamamoto Site Introduction	Odai Yamamoto Site Promotion Team	A3, double-sided, bi-fold	10,000	Japanese	Introduction to the Odai Yamamoto Site
Hakodate City Jomon Site Informational Flyer	Hakodate City Board of Education	210×100 mm, double-sided	10,000	English	Flyer made available at public facilities in Hakodate City, and handed out to site visitors.
Hakodate City Jomon Site Informational Flyer	Hakodate City Board of Education	210×100 mm, double-sided	5,000	Chinese (Simplified)	Flyer made available at public facilities in Hakodate City, and handed out to site visitors.
Hakodate City Jomon Site Informational Flyer	Hakodate City Board of Education	210×100 mm, double-sided	5,000	Chinese (Traditional)	Flyer made available at public facilities in Hakodate City, and handed out to site visitors.
Hakodate City Jomon Site Informational Flyer	Hakodate City Board of Education	210×100 mm, double-sided	3,000	Korean	Flyer made available at public facilities in Hakodate City, and handed out to site visitors.
Kakinoshima Site and Ofune Site Double-Sided Leaflet	Hakodate City Board of Education	A4, double-sided, 4-colour print, tri-fold	1,000	English	Double-sided leaflet handed out to visitors of the Kakinoshima Site and Ofune Site.
Kakinoshima Site and Ofune Site Double-Sided Leaflet	Hakodate City Board of Education	A4, double-sided, 4-colour print, tri-fold	1,000	Chinese (Simplified)	Double-sided leaflet handed out to visitors of the Kakinoshima Site and Ofune Site.
Kakinoshima Site and Ofune Site Double-Sided Leaflet	Hakodate City Board of Education	A4, double-sided, 4-colour print, tri-fold	1,000	Chinese (Traditional)	Double-sided leaflets handed out to visitors of the Kakinoshima Site and Ofune Site.
Kakinoshima Site and Ofune Site Double-Sided Leaflet	Hakodate City Board of Education	A4, double-sided, 4-colour print, tri-fold	1,000	Korean	Double-sided leaflet handed out to visitors of the Kakinoshima Site and Ofune Site.
Kitagokane Site Pamphlet	Date City Board of Education	A3, bi-fold, double-sided colour	30,000	Japanese	Pamphlet explaining the Kitagokane Shell Midden.
"Funkawan Culture" Vol.19	Date City Institute of Funkawan Culture	A4, 16 pages	5,000	Japanese	Magazine with information about the Kitagokane Shell Midden and other cultural properties within the city.

Table 23 Information provision by pamphlets (related with Indicator VII-3)

Name/title	Prepared (revised) by	Format/volume	Printed copies	Language	Outline
Map of Explanatory Boards in the Archaeological Sites	Tsugaru City Board of Education	A4, front and back	5,300	Japanese	Information about the locations of simple explanatory boards and photograph boards placed at archaeological remains that display the component parts. Distributed at the Jomon Site Information Center.
Museum Guide	Tsugaru City Board of Education	A3 spread, 4 pages	8,000	Japanese	Information on the exhibitions at the city museum, which is an official guidance facility for the component parts.
Historic Site, Futatsumori Site	Shichinohe Town Board of Education	A3, folded in four	4,000	Japanese	Pamphlet on the component part and its guidance facility.
Special National Historic Site, Sannai Maruyama Site Leaflet	Sannai Maruyama Jomon Culture Center	Accordion fold, 4 panels (210 mm × 525 mm, finished size 105 mm × 210 mm)	40,500	Japanese, English, Chinese (Traditional and Simplified), Korean	Leaflet introducing the Sannai Maruyama Site and its guidance facility. (Japanese: 170,000 copies; Foreign languages: 23,500 copies)
Worksheet	Sannai Maruyama Jomon Culture Center	A4	Online streaming	Japanese	Worksheet for schools. Downloadable from the Sannai Maruyama Special Historic Site website.
Sannai Maruyama Site Guidebook	Sannai Maruyama Jomon Culture Center	B5, 192 pages	1,000	Japanese	Guidebook about Sannai Maruyama and the artifacts excavated within the site.
Sannai Maruyama News No. 80	Sannai Maruyama Jomon Culture Center	A3, 2 pages	3,000	Japanese	Paper giving updated information about the Sannai Maruyama site.
Sannai Maruyama News No. 81	Sannai Maruyama Jomon Culture Center	A3, 2 pages	3,000	Japanese	Paper giving updated information about the Sannai Maruyama site.
Goshono Jomon Program (April-September)	Goshono Jomon Museum (Ichinohe Culture and Arts NPO)	A4, 4 pages	4,000	Japanese	Leaflet introducing the Jomon experiences one can participate in at the Goshono Jomon Museum.
Goshono Jomon Program (October-March)	Goshono Jomon Museum	A4, 4 pages	4,000	Japanese	Leaflet introducing the Jomon experiences one can participate in at the Goshono Jomon Museum.
Historic Site Irie Takasago Shell Midden Leaflet (additional print)	Toyako Town Board of Education	A4, tri-fold	10,000	Japanese	Leaflet displaying the visitor map of the Irie Takasago Shell Midden.
“Historic Site, Komakino Stone Circle” Leaflet	Komakino Stone Circle Preservation and Utilization Council	A4, 2 sections	8,000	Japanese	Leaflet about the Komakino Stone Circle and its guidance facility.
Isedotai Site Pamphlet	Kitaakita City	A3, bi-fold	0	Japanese	Pamphlet introducing the overview, highlights, access information, etc. of the Isedotai Site.
Isedotai Site Pamphlet	Kitaakita City	A4 tri-fold	0	Japanese	Pamphlet introducing the overview, highlights, access information, etc. of the Isedotai Site.

Table 23 Information provision by pamphlets (related with Indicator VII-3)

Name/title	Prepared (revised) by	Format/volume	Printed copies	Language	Outline
Oyu Stone Circles Center Pamphlet (Japanese)	Oyu Stone Circles Museum	A4 tri-fold	50,000	Japanese	Pamphlet about the Oyu Stone Circles and the Oyu Stone Circle Museum.
Oyu Stone Circles Center Pamphlet (English)	Oyu Stone Circles Museum	A4 tri-fold	11,000	English	Pamphlet about the Oyu Stone Circles and the Oyu Stone Circle Museum.
Special Historic Site, Oyu Stone Circles Guidebook	Oyu Stone Circles Museum	A4 32 pages + cover	300	Japanese	Additional print of a guidebook introducing the Oyu Stone Circles and the Oyu Stone Circle Museum.
Exhibition Catalog	Oyu Stone Circles Museum	A4 49 pages	300	Japanese	Additional print of the exhibition catalog.
"Kiusu Earthwork Burial Circles Tour and Walking Map" Leaflet	Chitose City Board of Education	Unfolded A4, spiral tri-fold	5,000	Japanese	Information about the highlights of the Kiusu Earthwork Burial Circles, etc. ※Additional print of the 2021 version
"Historic Site, Kiusu Earthwork Burial Circles" Leaflet (Children's Version)	Chitose City Board of Education	Unfolded A3, bi-fold	4,000	Japanese	Introducing the Kiusu Earthwork Burial Circles. ※Additional print of the 2020 version
"Sekibō" AR Exhibition Explanatory Card	Chitose City Board of Education	A5 (double-sided printing)	4,500	Japanese	Explaining sekibō (stone rods) unearthed at the Kiusu Earthwork Burial Circles.
Omori Katsuyama Site Leaflet	Hirosaki City Board of Education	A4 double-sided colour, tri-fold	10,000	Japanese	Additional print of already an existing leaflet.
Omori Katsuyama Site Pamphlet	Hirosaki City Board of Education	B5 colour, 12 pages	500	Japanese	Additional print of already an existing pamphlet.
Korekawa Jomonkan Special Exhibition Pamphlet 2024	Korekawa Archaeological Institution	A3 bi-fold, 4 pages	5,000	Japanese	Explanatory pamphlet for the special exhibition, "Research on Weaving/Combining."
Korekawa Jomonkan Autumn Special Exhibition Pamphlet 2024	Korekawa Archaeological Institution	A3 bi-fold, 4 pages	5,000	Japanese	Explanatory pamphlet for the fall seasonal exhibition, "When the Dogu with Palms Pressed Together Was Made."
"The Korekawa Site Became World Heritage!" Social Studies Supplementary Reader	Korekawa Archaeological Institution	A5, 16 pages	2,000	Japanese	Social studies supplementary reader for elementary school children.
Total			454,120		

Table 24 Information provision on websites (related with Indicator VII-3)

Name	Organizer	Outline	URL	Language	Update (times)	Views
Jomon Prehistoric Sites in Northern Japan	Headquarters for World Heritage Jomon Prehistoric Sites	Introduction of the Jomon Prehistoric Sites in Northern Japan.	<a href="https://jomon-japan.jp/">https://jomon-japan.jp/</a>	Japanese, English, Korean, Chinese (Traditional and Simplified)	40	706,060
Jomon of the North Web Portal	Hokkaido Jomon World Heritage Promotion Office	A website that shares information about Hokkaido Jomon sites.	<a href="https://kitano-jomon.jp/">https://kitano-jomon.jp/</a>	Japanese, English, Chinese, Korean, French	26	57,000
Jomon World Heritage Promotion Office	Hokkaido Jomon World Heritage Promotion Office	Sharing information about the activities of the Hokkaido Jomon World Heritage Promotion Office.	<a href="https://www.pref.hokkaido.lg.jp/ks/bns/jomon/">https://www.pref.hokkaido.lg.jp/ks/bns/jomon/</a>	Japanese	24	56,612
Let's Learn About Hokkaido's Jomon Sites~	Hokkaido Board of Education	VR tour data, etc. introducing viewers to Jomon component sites in Hokkaido.	<a href="https://www.dokyoj.pref.hokkaido.lg.jp/hk/bnh/147722.html">https://www.dokyoj.pref.hokkaido.lg.jp/hk/bnh/147722.html</a>	Japanese	1	1,943
Ishikari JOMON CLIP	Hokkaido Ishikari Promotion Bureau	A website that provides information related to Jomon culture in the administrative area of the Ishikari Promotion Office with videos and photos to highlight its attractiveness.	<a href="https://www.ishikari.pref.hokkaido.lg.jp/hk/kks/jomonclip.html">https://www.ishikari.pref.hokkaido.lg.jp/hk/kks/jomonclip.html</a>	Japanese	2	291
Jomon of the Iburi Region	Hokkaido Iburi General Subprefectural Bureau	Introduction to the Kitakogane Shell Midden and Irie Takasago Shell Midden, as well as to events held within the administrative area of the Iburi General Promotion Bureau.	<a href="https://www.iburi.pref.hokkaido.lg.jp/hk/kks/jomon/toppage.html">https://www.iburi.pref.hokkaido.lg.jp/hk/kks/jomon/toppage.html</a>	Japanese	10	925
Oshima Jomon Top Page	Hokkaido Oshima General Subprefectural Bureau	An introduction to Jomon events within the administrative area of the Oshima General Promotional Office.	<a href="https://www.oshima.pref.hokkaido.lg.jp/hk/kks/jomon.html">https://www.oshima.pref.hokkaido.lg.jp/hk/kks/jomon.html</a>	Japanese	—	860
Aomori Cultural Properties	Aomori Prefectural Board of Education	An introduction to cultural properties within the prefecture.	<a href="https://www.pref.aomori.lg.jp/soshiki/kyoiku/e-bunka/culture.html">https://www.pref.aomori.lg.jp/soshiki/kyoiku/e-bunka/culture.html</a>	Japanese	1	3,077
Akita Prefecture Official Homepage "Country of Beauty Akita Net"	Akita Prefecture	News from the Akita Forum.	<a href="https://www.pref.akita.lg.jp/pages/genre/bunka">https://www.pref.akita.lg.jp/pages/genre/bunka</a>	Japanese	2	—
Sotogahama Town	Sotogahama Town	Official website of Sotogahama Town.	<a href="https://www.town.sotogahama.lg.jp">https://www.town.sotogahama.lg.jp</a>	Japanese	30	8,000
Mumon X Page	Odai Yamamoto Site Promotion Team	Delivering up-to-date information.	<a href="https://x.com/jomon_mumon">https://x.com/jomon_mumon</a>	Japanese	2,000	400,000
World Heritage "Jomon Prehistoric Sites in Northern Japan"	Hakodate City Board of Education	A website introducing "Jomon Prehistoric Sites in Northern Japan" located within Hakodate City.	<a href="https://www.city.hakodate.hokkaido.jp/docs/2017122200063/">https://www.city.hakodate.hokkaido.jp/docs/2017122200063/</a>	Japanese	0	3,947
【World Heritage】 Jomon Culture and "Jomon Prehistoric Sites in Northern Japan"	Hakodate City Board of Education	A website introducing an overview of Hakodate Jomon culture and World Heritage.	<a href="https://www.city.hakodate.hokkaido.jp/docs/2017122200100/">https://www.city.hakodate.hokkaido.jp/docs/2017122200100/</a>	Japanese	1	2,258
【World Heritage】 Hakodate City Component Site Kakinoshima Site	Hakodate City Board of Education	A website introducing the "Jomon Prehistoric Sites in Northern Japan" component site, Kakinoshima Site.	<a href="https://www.city.hakodate.hokkaido.jp/docs/2022012400119/">https://www.city.hakodate.hokkaido.jp/docs/2022012400119/</a>	Japanese	1	3,076
【World Heritage】 Hakodate City Component Site Ofune Site	Hakodate City Board of Education	A website introducing the "Jomon Prehistoric Sites in Northern Japan" component site, Ofune Site.	<a href="https://www.city.hakodate.hokkaido.jp/docs/2022012400058/">https://www.city.hakodate.hokkaido.jp/docs/2022012400058/</a>	Japanese	2	3,513
【World Heritage】 Jomon Related Printed Materials (pamphlets, posters, etc.)	Hakodate City Board of Education	A website introducing printed materials related to Jomon sites within Hakodate City.	<a href="https://www.city.hakodate.hokkaido.jp/docs/2020060200033/">https://www.city.hakodate.hokkaido.jp/docs/2020060200033/</a>	Japanese	1	288
【World Heritage】 The Effect of World Heritage Inscription and Promotion on Jomon Prehistoric Sites	Hakodate City Board of Education	A website introducing the ways to produce the best results from World Heritage inscription.	<a href="https://www.city.hakodate.hokkaido.jp/docs/2020070100071/">https://www.city.hakodate.hokkaido.jp/docs/2020070100071/</a>	Japanese	0	32
Hakodate City Jomon Cultural Exchange Center	Hakodate City Board of Education	Webpage about the Jomon Cultural Exchange Center.	<a href="https://www.city.hakodate.hokkaido.jp/docs/2014021000060/">https://www.city.hakodate.hokkaido.jp/docs/2014021000060/</a>	Japanese	0	1,290

Table 24 Information provision on websites (related with Indicator VII-3)

Name	Organizer	Outline	URL	Language	Update (times)	Views
Jomon Culture Special Research Public Recruitment	Hakodate City Board of Education	A website to publish information regarding public recruitment of Jomon culture related special research projects.	<a href="https://www.city.hakodate.hokkaido.jp/docs/2014101600036/">https://www.city.hakodate.hokkaido.jp/docs/2014101600036/</a>	Japanese	0	21
Hakodate City Jomon Prehistoric Site Preservation and Utilization Association	Hakodate City Board of Education	A website introducing an overview of the Hakodate City Jomon Prehistoric Site Preservation and Utilization Association.	<a href="https://www.city.hakodate.hokkaido.jp/docs/2019090300059/">https://www.city.hakodate.hokkaido.jp/docs/2019090300059/</a>	Japanese	3	321
About Jomon Picture Story Play Lending	Hakodate City Board of Education	A website publishing information regarding the lending of picture story plays that introduce Jomon culture to children.	<a href="https://www.city.hakodate.hokkaido.jp/docs/2019120200038/">https://www.city.hakodate.hokkaido.jp/docs/2019120200038/</a>	Japanese	0	48
About the "Hakodate Jomon Digital Learning Book"	Hakodate City Board of Education	A website of digital contents that can be used via tablet computers, etc.	<a href="https://www.city.hakodate.hokkaido.jp/docs/2023042000027/">https://www.city.hakodate.hokkaido.jp/docs/2023042000027/</a>	Japanese	0	218
JOMON WEEK IN SUMMER 2024 World Heritage "Jomon Prehistoric Sites in Northern Japan" Inscription Three Year Anniversary	Hakodate City Board of Education	A website to spread information regarding the event held in commemoration for the third anniversary of World Heritage inscription.	<a href="https://www.city.hakodate.hokkaido.jp/docs/2024071700032/">https://www.city.hakodate.hokkaido.jp/docs/2024071700032/</a>	Japanese	1	350
【Website Closed】 World Heritage "Jomon Prehistoric Sites in Northern Japan" Inscription Three Year Anniversary Commemoration Plan	Hakodate City Board of Education	A website to spread information about a panel exhibition held in commemoration of the 3rd anniversary of World Heritage inscription.	<a href="https://www.city.hakodate.hokkaido.jp/docs/2024061700097/">https://www.city.hakodate.hokkaido.jp/docs/2024061700097/</a>	Japanese	1	259
World Heritage "Jomon Prehistoric Sites in Northern Japan" Inscription Three Year Anniversary Hakodate Jomon Festival 2024 in Kakinoshima	Hakodate City Board of Education	A website to spread information regarding an event held in commemoration of the third anniversary of World Heritage inscription.	<a href="https://www.city.hakodate.hokkaido.jp/docs/2024092700035/">https://www.city.hakodate.hokkaido.jp/docs/2024092700035/</a>	Japanese	1	453
Ofune Site Preservation and Utilization Plan	Hakodate City Board of Education	A website sharing the full and summarized versions of the "Ofune Site Preservation and Utilization Plan," as well as a summary of Planning Executive Committee.	<a href="https://www.city.hakodate.hokkaido.jp/docs/2024061900039/">https://www.city.hakodate.hokkaido.jp/docs/2024061900039/</a>	Japanese	5	211
Ofune Prehistoric Site Jomon Forest Tree Encyclopedia	Hakodate City Board of Education	A website introducing the trees living in the "Jomon Forest" of the Ofune Site.	<a href="https://www.city.hakodate.hokkaido.jp/docs/2023090500067/">https://www.city.hakodate.hokkaido.jp/docs/2023090500067/</a>	Japanese	0	281
Jomon Prehistoric Sites	Hakodate City Minami-Kayabe Branch Office	A website introducing the Jomon culture of the Minami-Kayabe District.	<a href="https://www.city.hakodate.hokkaido.jp/docs/2020012800083/">https://www.city.hakodate.hokkaido.jp/docs/2020012800083/</a>	Japanese	0	407
Hakodate City Jomon Cultural Exchange Center	Hakodate Jomon Culture Center	Webpage introducing the programs and opening status of the Jomon Cultural Exchange Center.	<a href="http://www.hjcc.jp/">http://www.hjcc.jp/</a>	Japanese and English	36	18,901
Hakodate City Jomon Culture Center X (formerly Twitter)	Hakodate Jomon Culture Center	The public account of the Hakodate City Jomon Culture Center, which shares information related to events at the center, as well as other information related to Jomon and the local area.	<a href="https://twitter.com/hako_mai">https://twitter.com/hako_mai</a>	Japanese	53	85,080
Institute of Funkawan Culture	Date City	Official website of the Institute of Funkawan Culture providing information about the Kitakogane Shell Midden, etc.	<a href="https://www.date.city.hokkaido.jp/funkawan/">https://www.date.city.hokkaido.jp/funkawan/</a>	Japanese	10	3,500
Historic Site, World Heritage, Museum	Tsugaru City	Official website of Tsugaru City.	<a href="http://www.city.tsugaru.aomori.jp/soshiki/kyoiku/bunkazai/shiseki">http://www.city.tsugaru.aomori.jp/soshiki/kyoiku/bunkazai/shiseki</a>	Japanese and English	3	—
Tsugaru City JOMON Web Portal	Tsugaru City	A web portal linking visitors to information about the Tagoyano Site, the Kamegaoka Site, related information centers, etc.	<a href="https://jomon-tsugaru.jp/">https://jomon-tsugaru.jp/</a>	Japanese, English, Chinese (Simplified and Traditional), Korean	5	—
TABI*KURA Shichinohe	Shichinohe Tourism and Products Promotion Council	Information on the Futatsumori Shell Midden and its guidance facility.	<a href="https://www.shichinohe-kankou.jp/futatsumorikaizuka/">https://www.shichinohe-kankou.jp/futatsumorikaizuka/</a>	Japanese and English	9	2,845

Table 24 Information provision on websites (related with Indicator VII-3)

Name	Organizer	Outline	URL	Language	Update (times)	Views
Facebook of Shichinohe Town Board of Education World Heritage Management Section	Shichinohe Town Board of Education	Information on the Futatsumori Shell Midden and its guidance facility.	<a href="https://www.facebook.com/%E4%B8%83%E6%88%B8%E7%94%BA%E6%95%99%E8%82%B2%E5%A7%94%E5%93%A1%E4%BC%9A%E4%B8%96%E7%95%8C%E9%81%BA%E7%94%A3%E5%AE%BE%F7%AD%96%E5">https://www.facebook.com/%E4%B8%83%E6%88%B8%E7%94%BA%E6%95%99%E8%82%B2%E5%A7%94%E5%93%A1%E4%BC%9A%E4%B8%96%E7%95%8C%E9%81%BA%E7%94%A3%E5%AE%BE%F7%AD%96%E5</a>	Japanese	44	16,484
Sannai Maruyama Special Historic Site	Sannai Maruyama Jomon Culture Center	Introduction to Sannai Maruyama Site's value, contents, unearthed artifacts, and facility.	<a href="https://sannaimaruyama.pref.aomori.jp">https://sannaimaruyama.pref.aomori.jp</a>	Japanese, English, Chinese, Korean	61	366,324
Goshono Jomon Park	Goshono Jomon Museum (Ichinohe Culture and Arts NPO)	The Goshono Site official website (site overview, event information, access details, etc. are published).	<a href="https://goshono-iseki.com/">https://goshono-iseki.com/</a>	Japanese, English, Korean, Chinese	600	134,506
Goshono Jomon Park X	Goshono Jomon Museum (Ichinohe Culture and Arts NPO)	Sharing news and event information from the Goshono Site, as well as images of the site and surveys taking place at the site.	<a href="https://twitter.com/goshono_Jomon">https://twitter.com/goshono_Jomon</a>	Japanese	309	404,700
Goshono Jomon Park Facebook	Goshono Jomon Museum (Ichinohe Culture and Arts NPO)	Sharing news and event information from the Goshono Site, as well as images of the site and surveys taking place at the site.	<a href="http://www.facebook.com/goshonoiseki/">http://www.facebook.com/goshonoiseki/</a>	Japanese	309	28,958
Goshono Jomon Park Instagram	Goshono Jomon Museum (Ichinohe Culture and Arts NPO)	Sharing photographs of the Goshono Site.	<a href="https://www.instagram.com/goshonoiseki/">https://www.instagram.com/goshonoiseki/</a>	Japanese	315	111,113
Irie Takasago Site	Toyako Town	The public website of the Irie Takasago Site, which shares information about the site, upcoming events, etc.	<a href="http://irie-takasago.net/">http://irie-takasago.net/</a>	Japanese	19	Not counted
Aomori City	Aomori City	Official website of Aomori City (overview of the archaeological site and the guidance facility).	<a href="https://www.city.aomori.aomori.jp/">https://www.city.aomori.aomori.jp/</a>	Japanese	4	1,725
Historic Site, Komakino Stone Circles	Komakino Stone Circle Preservation and Utilization Council	Official website of the Komakino Stone Circles (overview of the archaeological site, events, access, etc.).	<a href="https://komakinosite.jp/">https://komakinosite.jp/</a>	Japanese	21	55,457
Historic Site, Komakino Stone Circle/Jomon no Manabisha, Komakino Kan	Komakino Stone Circle Preservation and Utilization Council	Official Facebook page of the Komakino Stone Circle (overview of the archaeological site, events, access, etc.).	<a href="https://www.facebook.com/komakinosite/">https://www.facebook.com/komakinosite/</a>	Japanese	99	34,531
Historic Site, Isedotai Stone Circles	Kitaakita City	Official website of the Isedotai Stone Circles (overview of the archaeological site, events, access, etc.).	<a href="https://www.city.kitaakita.akita.jp/isedotai">https://www.city.kitaakita.akita.jp/isedotai</a>	Japanese	6	10,703
Kazuno City official website Oyu Stone Circles Center	Kazuno City	Introduction of the Oyu Stone Circles and Oyu Stone Circles Center, including events.	<a href="https://www.city.kazuno.akita.jp/kanko_bunka_sports/bunkazai/7/5593.html">https://www.city.kazuno.akita.jp/kanko_bunka_sports/bunkazai/7/5593.html</a>	Japanese	-	14,652
Kiusu Earthwork Burial Circles	Chitose City	Overview of the historic site (articles, photos, topographical maps), access, and pamphlets (PDF in Japanese, English, traditional Chinese, simplified Chinese, Korean).	<a href="https://www.city.chitose.lg.jp/docs/29954.html">https://www.city.chitose.lg.jp/docs/29954.html</a>	Japanese	14	2,393
Omori Katsuyama Site	Hirosaki City	Introduction of the Omori Katsuyama Site and activities for World Heritage List inscription.	<a href="https://www.city.hirosaki.aomori.jp/gaiyou/bunkazai/kuni/omori_katsuyama/index.html">https://www.city.hirosaki.aomori.jp/gaiyou/bunkazai/kuni/omori_katsuyama/index.html</a>	Japanese	9	1,114
Hachinohe City Buried Cultural Property Center Korekawa Archaeological Institution	Korekawa Archaeological Institution	Official website of the Korekawa Site and Korekawa Archaeological Institution (overview of the archaeological site and the museum, events, access, etc.).	<a href="https://www.korekawa-jomon.jp/">https://www.korekawa-jomon.jp/</a>	Japanese and English	72	145,648
<b>Total</b>					<b>4,150</b>	<b>2,690,375</b>

Table 25 Overview of private sector organizations involved in the preservation and utilization of component parts (related with Indicator VIII-1)

Name	Type of organization	Number of members	Established in	Outline of the organization
The Odai Yamamoto Site Promotion Team (General Incorporated Association)	General Incorporated Association	10	April 2024	Promotional activities, merchandise development, and guided tours for the archaeological site.
Southern Hokkaido History and Culture Promotion Association (General Incorporated Foundation)	General Incorporated Foundation	35	April 2016	This organization is designated as the administrator of the guidance facility, Hakodate City Jomon Cultural Exchange Center. It is the contractor for management of the component Kakinoshima Site and Ofune Site. It also carries out archaeological excavations in the city.
Jomon of North Club	Voluntary Organization	38	April 1998	This organization works to raise public awareness about Jomon culture through activities such as earthenware or magatama making workshops, etc. and the cleaning of archaeological sites. It was awarded the Hokkaido Local Culture Prize in 2017, and the Hakodate City Citizen Contribution Award (for meritorious deeds in the fields of
Southern Hokkaido Jomon Culture Promotion Council	Voluntary Organization	1,215	August 2013	This organization is a branch of the Hakodate-Hokuto-Nanae Economic Organization Council, which is comprised of the chambers of commerce and associations of commerce and industry of the two cities and one town. It hosts events and produces goods to raise awareness about Jomon culture, as well as the installation of hanging banners on buildings in front of railway station buildings. (1,215 members (58 regular/1,157 supporting))
Jomon DOHNAN Project	Voluntary Organization	36	July 2019	Conducting Jomon-related activities such as the development of character merchandise using dogu motifs, donations to local public elementary schools, local business collaboration projects, events, etc.
Okonshibe Association	Voluntary Organization	40	May 2001	Volunteer guides at the Historic Site, Kitakogane Site.
Date Funkawan Jomon Festival Executive Committee	Voluntary Organization	15	May 1997	This organization hosts hands-on learning events at the historic site park.
Tsugaru Jomon Association	Specified Nonprofit Corporation	80	July 2007	This organization hosts events, forums, and workshops about the Tagoyano Shell Midden that provide information about the archaeological site.
Tsugaru Jomon Site Guides	Volunteer Organization Belonging to the Tsugaru City Board of	15	September 2019	This organization hosts guided events at the Tagoyano Shell Midden and its guidance facility.
Futatsumori Site Preservation Cooperation Association	Voluntary Organization	20	April 1997	This organization carries out the fumigation of the reconstructed pit dwellings at the Historic Site, Futatsumori Site, as well as the cleaning of utility facilities and mowing.
Futatsumori Site Volunteer Guide Association	Voluntary Organization	8	April 2021	This organization was established to carry out activities first started by a volunteer guides' organization that had been founded by the local community. It provides volunteer guides to the archaeological site and carries out hands-on activities.
Sannai Maruyama Supporters' Team	General Incorporated Association	87	May 1995	This organization provides reception staff to the Sannai Maruyama Jomon Culture Center, guide staff to the archaeological site, and hosts hands-on crafts workshops, etc.
Sannai Maruyama Jomon Association	NPO	56	August 2003	This organization publishes the "Jomon File" six times a year, providing up-to-date information about the archaeological site, and gives lectures called "Jomon Juku" (lit., Jomon School).
Ichinohe Jomon Satoyama Club	Voluntary Organization	28	April 2024	This organization provides information to visitors of the Goshono Site or other cultural properties within Ichinohe City, cleans cultural properties, and plans educational activities.
Indigo Club	Voluntary Organization	8	July 2024	This organization develops merchandise to be sold at the museum shop and helps with events held at the Goshono Site.
Goshono Protection Boys and Girls Club	Voluntary Organization	43	May 1999	This organization is comprised of Ichinohe Minami Elementary School students in grades 3 to 6. It carries out clean-up activities, promotional activities, study and research on the Goshono Site, etc. It holds a public presentation about the results of its activities every year.
Aputa Furenai Association	Voluntary Organization	20	April 2003	This organization aims to deepen people's understanding of the valuable archaeological sites of Toyako Town, promoting their protection and utilization, and disseminating information about them.
TOYAKO Jomon Guide Association	Voluntary Organization	13	March 2023	This organization aims to deepen the local community's love for their hometown and to increase site visitor satisfaction through guided activities that spread information regarding the World Heritage Irie Takasago Shell
Komakino Stone Circle Preservation and Utilization Council	General Incorporated Association	6	October 2014	This organization works to preserve and utilize the Komakino Site, and to conserve the surrounding area. It manages and operates the Komakino Archaeological Site Protection Center and observation facilities as a designated
Isedotai Stone Circles Working Group	Voluntary Organization	23	April 1997	This organization provides volunteer guides at the archaeological site, and works towards information dissemination, site utilization, etc.
Isedotai Stone Circles Junior Volunteer Guides	Voluntary Organization	44	July 2015	Comprised of elementary, junior high and high school student volunteer guides.

Table 25 Overview of private sector organizations involved in the preservation and utilization of component parts (related with Indicator VIII-1)

Name	Type of organization	Number of members	Established in	Outline of the organization
Oyu SC Association	Voluntary Organization	40	July 2019	This organization provides reception staff and guides at Oyu Stone Circles (including the guidance facility).
Chitose Cultural Property Protection Association	Voluntary Organization	16	November 1979	This organization implements projects for the protection and awareness-raising of cultural properties, carries out research and studies on cultural properties, and publishes an educational bulletin called, "Chitose Culture," etc.
Kiusu Earthwork Burial Circles Protection and Utilization Association	Voluntary Organization	37	June 2014	This organization carries out activities for members to learn about the Kiusu Earthwork Burial Circles and other archaeological sites in the city, and holds activities to support the preservation of the Kiusu Earthwork Burial
Council for the Promotion of the Preservation and Utilization of the Historic Site, Omori	Voluntary Organization	19	July 2013	This organization carries out the maintenance of the archaeological site (such as mowing), organizes events for site presentation and/or utilization, and works towards the preservation and management of the sites.
Hirosaki Jomon Association	Voluntary Organization	100	September 2014	This organization was established to raise awareness about the value and attractiveness of the Omori Katsuyama Site and other Jomon sites in the Tsugaru region. It also organizes guide training workshops for the Omori-
Omori Katsuyama Jomon Site Guides Association	Voluntary Organization	27	January 2022	This organization provides guides for the Omori Katsuyama Site.
Korekawa Cultural Property Protection Association	Voluntary Organization	13	July 1974	This organization carries out patronage projects, such as environmental improvement and conservation activities at the Korekawa Site.
Hachinohe Jomon Preservation Association	Voluntary Organization	146	October 1995	This organization cooperates with projects related to the Korekawa Jomon Museum, supports the Jomon Korekawa volunteers, and organizes events to promote the Korekawa Site.
Jomon Korekawa Volunteers	Voluntary Organization	40	October 1996	This organization provides volunteer guides for the Korekawa Site and the Korekawa Jomon Museum exhibition room, advises about hands-on learning, and carries out internal training to improve skills, among other activities.
Total		2,278		

Table 26 Activities of local people and civic groups (related with Indicator VIII-1)

Title/Name	Date	Organizer	Number of participants	Summary
UNESCO World Cultural Heritage Lecture	24 August 2024	Executive Committee for the Promotion of Utilization of World Cultural Heritage in Hokkaido	116	Lecture for young children, students, and their guardians about World Heritage related programs to boost understanding of the Outstanding Universal Value of the Jomon Prehistoric Sites in Northern Japan.
Jomon Snow Festival	8–9 February 2025	Northern Jomon Council	13,640	A Jomon period-themed event including lectures from specialists, panel exhibitions, workshops and the sale of original merchandise.
Odai Yamamoto Site Facility Mumon-kan Museum Opening Ceremony	26 April 2024	Odai Yamamoto Site Promotion Team	309	Odai Yamamoto Site Facility Mumon-kan Museum opening ceremony, exhibition guided tours, etc.
Mumon Marche	5 May 2024	Odai Yamamoto Site Promotion Team	374	Mini market and site guided tours for site visitors.
Mumon Marche	2 June 2024	Odai Yamamoto Site Promotion Team	160	Mini market and site guided tours for site visitors.
Mumon Marche	7 July 2024	Odai Yamamoto Site Promotion Team	120	Mini market and site guided tours for site visitors.
Mumon Marche	4 August 2024	Odai Yamamoto Site Promotion Team	147	Mini market and site guided tours for site visitors.
Mumon Marche	8 September 2024	Odai Yamamoto Site Promotion Team	307	Site guided tours, workshops, art events, etc.
Mumon Marche	6 October 2024	Odai Yamamoto Site Promotion Team	171	Mini market and site guided tours for site visitors.
Mumon Marche On Tour	27 October 2024	Odai Yamamoto Site Promotion Team, Odai Yamamoto Site Promotion Team, etc.	300	Site promotion and workshops.
Middle School Guides	3 July 2024	Odai Yamamoto Site Promotion Team, etc.	32	Site guided tours hosted by middle schoolers, for middle schoolers.
Booth at the Hakodate Jomon Festival	6 October 2025	Hakodate City	-	Panel exhibition, leaflet distribution, etc. introducing the Odai Yamamoto Site.
New Museum Merchandise Completion Report	26 March 2025	Odai Yamamoto Site Promotion Team	2	Odai Yamamoto Site Facility Mumon-kan museum merchandise development report.
Mannenbashi Elementary School Jomon Class	9 April 2024	Jomon DOHNAN Project	30	Jomon picture-story plays, quizzes, etc. held for Mannenbashi Elementary School 3rd graders.
Cleaning Activities	20 April 2024	Jomon of the North CLUB	10	Volunteer cleaning of the Ofune Site and the surrounding area.
Hokkaido Airport Association General Assembly Lecture	16 May 2024	Hokkaido Airport Association	28	Following a request from the organizers, a cultural properties specialist was invited to hold a lecture about Jomon sites.
Lecture About the Value and Utilization of the World Heritage Jomon Prehistoric Sites in Northern Japan	12 June 2024	Southern Hokkaido Jomon Culture Promotion Council (Hakodate Chamber of Commerce and Industry)	26	A lecture for members of the Southern Hokkaido Jomon Culture Promotion Council held in conjunction with their general assembly.
Mini Stone Ax Making	22 June 2024	Jomon of the North CLUB	7	A hands-on mini stone ax making experience held at the Minami-Kayabe Community Center.
Dohnan JOMON Discovery! in the Hakodate City Tsutaya Bookstore	4 August 2024	Jomon DOHNAN Project	40	Jomon karuta competition, Jomon workshops, merchandise sales, etc.
Earthenware Making	24 August 2024	Jomon of the North CLUB	12	A hands-on earthenware making experience held at the Minami-Kayabe Community Center.
Jomon Culture Lecture	27 August 2024	Japanese Modern History Research Club	10	Following a request from the organizers to learn about the World Heritage Ofune Site, a cultural properties specialist was invited to hold a lecture.
Entrance Exhibition	30 August 2024 – 31 March 2025	Hakodate Minami-Kayabe Junior High School	-	Artifacts unearthed from the Kakinoshima Site and Ofune Site were displayed at the school's entrance in order to increase student interest and understanding of local Jomon sites.
Aomori-Hakodate Exchange Festival in Kanemori Red Brick Warehouse	14–16 September 2024	Jomon DOHNAN Project	100	Jomon workshops, Jomon panel exhibitions, etc.
Open Field Earthenware Firing	12 October 2024	Jomon of the North CLUB	9	Open field firing of earthenware made during a previously held earthenware making workshop at the Ofune Site.
Autumn Tree-Planting Project	26 October 2024	Minami-Kayabe Forest and Sea Association	36	20 Japanese chestnut trees were donated and planted at the Historical Site, Kakinoshima Site.

Table 26 Activities of local people and civic groups (related with Indicator VIII-1)

Title/Name	Date	Organizer	Number of participants	Summary
Aomori-Southern Hokkaido Jomon Market in Omiya Station	9–10 November 2024	Jomon DOHNNAN Project	-	Jomon workshops, Jomon panel exhibitions, etc.
Jomon Site Lecture	15 November 2024	Kikonai Junior High School, Kikonai Town	23	Following a request from the organizers, a cultural properties specialist was invited to hold a lecture about Jomon sites.
Jomon Learning ~ Jomon Site PR Project ~	19 November 2024	Hakodate Minami-Kayabe Junior High School	82	Following a request from the organizers, a cultural properties specialist was invited to hold a lecture about Jomon sites during the students' General Learning
Enjoy Jomon Sweets-Making Class	30 November 2024	Jomon DOHNNAN Project	10	An event where participants made sweets with Jomon and chestnut motifs.
Jomon Karuta Competition	16 March 2025	Jomon DOHNNAN Project	50	A competition using karuta made using poems written by local children.
Jomon Merchandise Distribution	27 March 2025	Jomon DOHNNAN Project	3	Distribution of an estimated 2,400 clear file folders with an image of Oshima Site's Kakku to elementary school 1st graders of the Oshima and Hiyama
Historic Site Guides	1 April–30 November 2024	Okonshibe Association	6,010	On-site guides and/or instructors for experiential learning were provided a total of 131 times.
Lecture at Kizukuri High School	6 June 2024	NPO Tsugaru Jomon Association	140	Lecture by specialist staff of the Tsugaru City Board of Education about the Jomon Prehistoric Sites in Northern Japan.
JOMON Kamegaoka and Tagoyano Sites' Festival 2024	7 September 2024	NPO Tsugaru Jomon Association	400	Stage events, food and craft exhibits, shell making, fire starting, etc. to learn about and enjoy the archaeological sites.
Visitor Guides	13 April 2024 – 30 November 2024	Tsugaru Jomon Site Guides	5,609	Guided tours for visitors to the site held everyday during the period.
Bus Tours	30 November 2024	NPO Tsugaru Jomon Association	16	A bus tour of the Tagoyano Shell Midden, the Maruyama Site, the Ishigami Site, the Morita History and Folklore Museum, and the Shiura History and Folklore Museum, with explanations provided by a curator.
Volunteer Guide Training Course, “Let's Dig Deep! Jomon Site Study Course”	14 December 2024	NPO Tsugaru Jomon Association	50	An explanation of the site and guidance facility's development plans and schedule, given by a curator to the local community.
Oral History Classroom	20 December 2024	NPO Tsugaru Jomon Association	29	Association member Tetsuya Hamayama gave a talk about the history and Jomon culture of the Dekishima region from a variety of perspectives, which was followed by member opinion exchange.
JOMON Kamegaoka Culture Forum 2025	24 February 2025	NPO Tsugaru Jomon Association	120	Discussions of conservation activities of the sites, including a keynote speech by Hokkaido Prefecture Special Researcher Chiharu Abe, sharing of conservation efforts by the Tsugaru City, sharing of activities held by Kizukuri
JOMON Oku-Tsugaru Exchange and Trade Symposium 2025	2 March 2025	NPO Tsugaru Jomon Association	70	Discussions of conservation activities of the sites and development of site guidance facilities, including a keynote speech by Nakadomari Town Museum Director Jun Saito, reports of site utilization projects from the Tsugaru City Board of Education, etc.
Maintenance and Management Activities for the Futatsumori Site	19 April 2024 – 30 November 2024	Futatsumori Site Preservation Cooperative Association	16	Fumigation of pit houses in Futatsumori Shell Midden Historic Site Park and cleaning of facilities for visitors' convenience.
Futatsumori Site Guides	1 April 2024 – 31 March 2025	Futatsumori Site Volunteer Guide Group	1,043	Futatsumori Site and Museum guides. (site is closed from December to March for the winter season)
Futatsumori Site Junior Guides	1 April 2024 – 31 March 2025	Futatsumori Site Volunteer Guide Group	211	Guided tours of the Futatsumori Shell Midden Museum held by elementary and middle schoolers on the first Sunday and third Saturday of every month.
Let's Solve the Mysteries of the Futatsumori Site!	1 April 2024 – 31 March 2025	Futatsumori Site Volunteer Guide Group	480	A mystery solving game centered around the Futatsumori Shell Midden Museum's exhibition.
Futatsumori Site Museum Hands-On Workshops	1 April 2024 – 31 March 2025	Futatsumori Site Volunteer Guide Group	24	Magatama, plastic sheet, etc. hands-on crafts workshop.
Picture Book Reading	7 April 2024 – 2 March 2025	Futatsumori Site Volunteer Guide Group	79	Reading aloud of Jomon Era related picture books the first Sunday of every month.

Table 26 Activities of local people and civic groups (related with Indicator VIII-1)

Title/Name	Date	Organizer	Number of participants	Summary
Futatsumori Site Volunteer Guide Initial Training Session	14 and 21 April 2024	Futatsumori Site Volunteer Guide Group	12	Training course for new guides.
Sher-inu Pompom Craft Workshop	28 April 2024	Futatsumori Site Volunteer Guide Group	20	Workshop to make pompoms in the shape of Sher-inu, external teacher invited to lead workshop.
Shichinohe Roadside Station Gratitude Festival PR Booth	17 and 18 May 2024, 26 and 27 October 2024	Futatsumori Site Volunteer Guide Group	-	A booth at the Shichinohe Roadside Station Gratitude Festival to promote the Futatsumori Shell Midden.
Lacquer Polishing Experience	19 May 2024	Futatsumori Site Volunteer Guide Group	22	Laquer polishing class, external teacher invited to lead workshop.
Futatsumori Site Cleaning Activities	1 June 2024	Shichinohe Town Tobacco Sales Cooperative	14	Trash pick-up at the Futatsumori Site.
Bug Spray	22 June 2024	Futatsumori Site Volunteer Guide Group	31	Workshop to make bug spray out of plant-based ingredients, external teacher invited to lead workshop.
World Heritage Inscription Three Year Anniversary Activities	27–29 July 2024	Futatsumori Site Volunteer Guide Group	25	Futatsumori Park and Museum tours held by the guide association.
Futatsumori Site Museum Photo Rally	1 August 2024 – 31 March 2025	Futatsumori Site Volunteer Guide Group	-	Photography and sketches made of artifacts displayed in the Futatsumori Site Museum.
Hospitality Activities	11–12 August 2024, 28 December 2024	Futatsumori Site Volunteer Guide Group	-	Promotional activities for the Futatsumori Shell Midden at Shichinohe-Towada Station.
Plastic Sheet Craft Workshop and Photo Rally	13 September 2024	Futatsumori Lovers' Club	-	Promotional activities for the Futatsumori Shell Midden at Shichinohe-Towada Station.
Handprint Art Workshop	21 September 2024	Futatsumori Site Volunteer Guide Group	46	A workshop for children where participants could make art out of their handprints.
Futatsumori Souvenir Development and Sale	12 January 2024–	Futatsumori Site Volunteer Guide Group	-	Futatsumori Site themed brownies developed in collaboration between a local bakery and the guide association.
Science Cafe	19 October 2024	Gennen Technology Center	150	The Futatsumori Site Volunteer Guide Group was invited to the Gennen Technology Center's event, where they held miniature earthenware making.
Jomon Earth Protector's Club	23 November 2024	Hapitano NPO	44	Becoming Jomon Plan
Jomon Card Fan Meeting	21 December 2024	Futatsumori Site Volunteer Guide Group	12	Meeting where participants could show-off their favorite Jomon cards, and exchange cards with other participants.
Deer Antler Accessory Making	25 January 2025	Futatsumori Lovers' Club	16	A workshop where participants used kits made by Towada Technical High School students to make their own deer antler accessories.
Sher-inu Coloring Book	1–28 February 2025	Futatsumori Site Volunteer Guide Group	26	Display of drawings of Sher-inu by children from the town's Children's Activity Centers.
Junior Guide Presentations	16 March 2025	Futatsumori Site Volunteer Guide Group	28	Presentation and social meeting hosted by junior guides.
Icing Cookie Making	20 March 2025	Futatsumori Site Volunteer Guide Group	57	Making of icing cookies with motifs from the site.
Archaeological Site Guides	1 April 2024 – 31 March 2025	Sannai-Maruyama Supporting Group (Inc.)	44,645	Guided tours of the archaeological site to explain the site's value and characteristics.
Hands-On Learning	1 April 2024 – 31 March 2025	Sannai-Maruyama Supporting Group (Inc.)	10,772	Miniature dogu making, etc. hands-on learning workshops held in the guidance facility.
Goshono Jomon Park Clean-Up Day	20 April and 9 November 2024	Ichinohe Town Board of Education	370	Clean-up of the Goshono Site with the participation of volunteer groups, private companies, and the general public. (Held once in spring and once in autumn)
Hand-Made Program	1 April 2024 – 31 March 2025	Ichinohe Town Board of Education	901	Hands-on program where participants make items from the Jomon period such as earthenware and magatama, and try out Jomon weaving.
Marutto Satoyama Program	19 May 2024 – 7 February 2025 (10 sessions in total)	Ichinohe Town Board of Education	65	Hands-on program where participants learn how the natural environment was used during the Jomon period. Activities include tree bark weaving, rope

Table 26 Activities of local people and civic groups (related with Indicator VIII-1)

Title/Name	Date	Organizer	Number of participants	Summary
Goshono Learning Program	25 May 2024 – 19 March 2025 (13 sessions in total)	Ichinohe Town Board of Education	109	Programs using the Goshono Site's park, such as Jomon pottery cooking experiences, stuffed animal sleepovers, star-gazing, archeologist experiences,
Site Guide	1 April 2024 – 31 March 2025	Ichinohe Jomon Satoyama Club	2,591	Guided tours of the Goshono Site.
Hands-On Jomon Earthenware Making	8 June 2024	Toyako Town Board of Education, Jomon City Summit in Toyako Executive Committee, Aputa Frenai Association, TOYAKO Jomon Guide	27	Learning about Jomon period crafts techniques through making one's own Jomon earthenware.
Volunteer Guide Course	16 June 2024	Toyako Town Board of Education, TOYAKO Jomon Guide Association	7	A course held to educate site guides.
Jomon Lecture Series	14 July 2024 25 August 2024 29 March 2025	Toyako Town Board of Education, Jomon City Summit in Toyako Executive Committee, Aputa Frenai Association, TOYAKO Jomon Guide	112	A lecture series that focused on Jomon people's exchanges, Jomon people's lives as can be understood from shell middens, and World Heritage and its interpretation in Thailand.
Toyako Jomon Festival	15 July 2024	Toyako Town Board of Education, Jomon City Summit in Toyako Executive Committee, Aputa Frenai Association, TOYAKO Jomon Guide	230	An event to deepen participant understanding about the Irie Takasago Shell Midden through Jomon experiences that anyone can enjoy.
Night Museum	12 August 2024	Toyako Town Board of Education, Jomon City Summit in Toyako Executive Committee, Aputa Frenai Association, TOYAKO Jomon Guide	17	Experiencing the nighttime life of Jomon people at a reconstructed pit dwelling.
Aputa Frenai Association's Site Preservation Activities	23 September 2024	Aputa Frenai Association	10	Cleaning and mowing of the Takasago Shell Midden Park.
"Jomon Prehistoric Sites in Northern Japan" Panel Exhibition	14 September – 8 October 2024	Toyako Town Board of Education, Jomon City Summit in Toyako Executive Committee, Aputa Frenai Association, TOYAKO Jomon Guide	50	A panel exhibition about the Jomon Prehistoric Sites in Northern Japan held in conjunction with the Jomon City Summit.
Jomon City Summit in Toyako	7–8 October 2024	Toyako Town Board of Education, Jomon City Summit in Toyako Executive Committee, Aputa Frenai Association, TOYAKO Jomon Guide	411	Opinion exchange and excursions related to city-planning centered on the utilization of Jomon culture.
Cultural Property Fire Prevention Day Dogu Making Experience	25 January 2025	Toyako Town Board of Education, Aputa Frenai Association	25	Evacuations, fire drills, and Jomon experiences (dogu making) held in conjunction with Cultural Heritage Fire Prevention Day.
Saturday Guides	Every Saturday from 29 April to 25 November 2024	TOYAKO Jomon Guide Association	7	Free guided tours of the Irie Takasago Shell Midden.
Jomon no Manabisha, Komakino Kan 9th Anniversary Special Day	27 April 2024	Komakino Stone Circle Preservation and Utilization Council	398	Events such as workshops, etc.
World Heritage Inscription Three Year Anniversary Event "Komakino Jomon Festival"	28 July 2024	Komakino Stone Circle Preservation and Utilization Council	365	Events such as workshops, etc.
Komakino Jomon Workshop	26 October 2024	Komakino Stone Circle Preservation and Utilization Council	20	Events such as workshops, etc.
Parent-Child Experience! Jomon Cooking	2 March 2025	Komakino Stone Circle Preservation and Utilization Council	25	Hands-on classes.
Archaeological Site Guides	1 April 2024 – 31 March 2025	Komakino Stone Circle Preservation and Utilization Council	1,992	Explanation of Komakino Stone Circles to visitors (the number of guided groups).

Table 26 Activities of local people and civic groups (related with Indicator VIII-1)

Title/Name	Date	Organizer	Number of participants	Summary
23rd Kitaakita City Jomon Festival	14 September 2024	Kitaakita Jomon Festival Executive Committee	2,045	Jomon hands-on events held around sites and guidance facilities.
Prehistoric Site Guides	1 April 2024 – 31 March 2025	Isedotai Stone Circles Working Group	610	Site guided tours led by the Isedotai Site Working Group.
Prehistoric Site Guides	27–29 April 2024, 3–6 May, 3, 4, 10–15, 17 and 18 August	Isedotai Stone Circles Junior Volunteer Guides	-	Site guided tours led by junior volunteer guides between elementary to high school age.
Stone Circles Summer Solstice Festival 2023	21 June 2024	Oyu SC Association	300	Lectures, choir performances and other entertainment, and sunset viewing event held at the Oyu Stone Circle Site (approx. 300 people).
Kiusu Earthwork Burial Circles Maintenance Activities	27 May, 8 June, 23 July, 29 August, 2 September, 7 October, 18 November 2024	Central Union Association (local residents' neighborhood association)	-	Weeding and mowing of the entire property (5/27, 6/8, 7/23, 8/29), spot cleaning within the site (9/2, 10/7, 11/18), mowing of grass around the visitor parking lot (5/27, 7/23, 8/29).
Kiusu Earthwork Burial Circles Cleaning Activities	13 April 2024	Kiusu Earthwork Burial Circles Protection and Utilization Association	29	Trash pick-up within the site.
Kiusu Earthwork Burial Circles Guides	26 April – 23 November 2024	Kiusu Earthwork Burial Circles Protection and Utilization Group, Chitose City Buried Cultural Properties	1,051	Guided tours of Kiusu Earthwork Burial Circles for visitors. (Project done in cooperation with local residents over 212 days. 34 registered guides. 3,438 visitors went on tours with guides.)
Chitose Jomon Forum Winter 2024 “Chitose's World Heritage ~Connecting the Kiusu Earthwork Burial Circles and Hokkaido~”	22 December 2024	Kiusu Earthwork Burial Circles Protection and Utilization Group, Chitose City Buried Cultural Properties Center	110	Training sessions for volunteer guides and the general public (as part of the Citizen Collaboration Promotion Project). Lectures about earthwork burial circles, and talks about earthwork burial circles and stone circles by staff from the Hokkaido Buried Cultural Properties Center staff and Fukagawa and Chitose Cities' Buried Cultural Properties specialists.
Site Utilization Event	4 May 2024, 5 May 2024, 6 July 2024	Kiusu Earthwork Burial Circles Protection and Utilization Association	40	Plant quizzes, plastic sheet dogu making, accessory making, etc. at the component site. (As part of the Citizen Collaboration Promotion Project. Out of the visitors to the site, 80 participated in events. Also hosted in July to commemorate World Heritage inscription with up to 40 participants).
Omori Katsuyama Site Guide Association Member Skills Training Course	29 June 2024	Hirosaki Jomon Association	28	Training course for guide association members to improve their skills. (Hosted in collaboration with the Omori Katsuyama Stone Circle Jomon site Guide
Hokkaido World Heritage Component Site Tour	10–12 July 2024	Hirosaki Jomon Association	24	A tour of the World Heritage component sites in Toyako Town and Date City.
Jomon Hands-On Workshops for Children	① 29 July 2024 ② 30 July 2024	Hirosaki Jomon Association	68	① Magatama making, ② Jomon earthenware/dogu making.
World Heritage Inscribed Site Tour	29 September 2024	Hirosaki Jomon Association	24	Tour of the Odai Yamamoto Site.
Jomon Lecture	① 7 October 2024, ② 14 October 2024, ③ 21 October	Hirosaki Jomon Association	84	Held in collaboration with the Omori Katsuyama Stone Circle Jomon site Guide Association.
Delivery Lecture	④ 23 October 2024 ⑤ 12 December 2024	Hirosaki Jomon Association	67	Playing with clay, and magatama making.
Member Upskill Training	⑥ 24 May 2024 ⑦ 19 January 2025	Omori Katsuyama Stone Circle Jomon Site Guide Association	28	Training course for guide association members to improve their skills and knowledge.
FY2024 Aomori Prefecture Archaeology Club Fall Conference "Kamegaoka Site's Past and Future"	16 November 2024	Aomori Prefecture Archaeology Club	100	Discussions about the distribution of the site's components and the site's character, in comparison to the Omori Katsuyama Stone Circles and other Aomori Prefecture prehistoric sites from the same period.
Archaeological Site and Exhibit Interpretation	1 April 2024 – 31 March 2025	Jomon Korekawa Volunteer	229	Interpretation of the Korekawa Site and its unearthed artifacts.
Jomon Hands-On Learning	1 April 2024 – 31 March 2025	Jomon Korekawa Volunteer	669	Sunday Jomon experience corner, etc.
Korekawa Site Cleaning Day	25 October 2024	Korekawa Archaeological Institution	19	Cleaning and removal of mud around the Korekawa site.

Table 26 Activities of local people and civic groups (related with Indicator VIII-1)

Title/Name	Date	Organizer	Number of participants	Summary
Support Staff Training	18 May, 25 May, 8 June, 21 June, 22 June and 29 June 2024; 11 January, 25 January, 1 February, 15 February, 21 February and 22 February 2025	Korekawa Archaeological Institution	225	Training of support staff (volunteers) to be able to explain exhibits and hold hands-on classes.
Total			99,853	

Table 27 Outline of custodial bodies involved in the preservation and utilization of component parts (related with Indicator VIII-1)

Name	Status of custodial body and name of the component part(s) in custody	Number of personnel in FY 2024	Outline of the organization as of FY 2024
Sotogahama Town	Owner and manager of Odai Yamamoto Site	【Number of personnel engaged in management and conservation of the component part(s)】 1 director (holding another post), 2 curators, 1 staff member (holding another post)	The Board of Education (World Heritage Section) is responsible for the preservation and management of the component part.
Hakodate City	Owner and manager of Kakinoshima Site and Ofune Site	【Number of personnel engaged in management and conservation of the component part(s)】 1 director, 2 technical staff members, 3 administrative officers	The Board of Education (Cultural Property Division) is responsible for the preservation and management of the component parts.
Date City	Owner and manager of Kitakogane Site	【Number of personnel engaged in management and conservation of the component part(s)】 1 director, 1 technical staff member, 3 administrative officers	The Board of Education (Lifelong Learning Division) is responsible for the preservation and management of the component part.
Tsugaru City	Owner and manager of Tagoyano Site and Kamegaoka Burial Site	【Number of personnel engaged in management and conservation of the component part(s)】 1 director, 4 technical staff members (One person also serves as head of department), 2 administrative officers	A Local government (377 staff members). The Board of Education (Cultural Property Division) is responsible for the preservation and management of the component parts.
Shichinohe Town	Owner and manager of Futatsumori Site	【Number of personnel engaged in management and conservation of the component part(s)】 1 director, 1 technical staff member, 2 administrative officers	A Local government (151 staff members). The Board of Education (Lifelong Learning Division) is responsible for the preservation and management of the component part.
Aomori Prefecture	Owner and manager of Sannai Maruyama Site	【Number of personnel engaged in management and conservation of the component part(s)】 1 director, 1 deputy director, 9 technical staff members, 5 administrative officers *Excluding staffs of the World Cultural Heritage Division	The Sannai Maruyama Jomon Culture Center, affiliated with Aomori Prefectural Board of Education, is responsible for the preservation and management of the component part.
Ichinohe Town	Owner and manager of Goshono Site	【Number of personnel engaged in management and conservation of the component part(s)】 1 director, 2 technical staff members, 4 administrative officers	Ichinohe Town Board of Education (World Heritage Section) is responsible for the preservation and management of the component part.
Toyako Town	Owner and manager of Irie Site and Takasago Burial Site	【Number of personnel engaged in management and conservation of the component part(s)】 1 director, 2 technical staff members	The Board of Education (Social Education Division) is responsible for the preservation and management of the component part.
Aomori City	Owner and manager of Komakino Stone Circle	【Number of personnel engaged in management and conservation of the component part(s)】 1 director, 3 technical staff members, 3 administrative officers	The Board of Education (Cultural Property Section) is responsible for the preservation and management of the component part.
Kitaakita City	Owner and manager of Isedotai Stone Circles	【Number of personnel engaged in management and conservation of the component part(s)】 1 director, 2 technical staff members, 1 administrative officer	The Board of Education (Culture and Sport Division, Department of Tourism, Culture and Sport) is responsible for the preservation and management of the component part.
Kazuno City	Owner and manager of Oyu Stone Circles	【Number of personnel engaged in management and conservation of the component part(s)】 1 director, 2 technical staff members, 2 administrative officers	The Oyu Stone Circles Museum, affiliated with the Board of Education, is responsible for the preservation and management of the component part.
Chitose City	Owner and manager of Kiusu Earthwork Burial Circles	【Number of personnel engaged in management and conservation of the component part(s)】 1 directors (administrative, holding another post), 6 technical staff members, 1 administrative officer	A local government (1,102 staff). The Board of Education (Centre for Buried Cultural Properties and Senior Officer in charge of Nationally Designated Historic Sites) is responsible for the preservation and management of the component part.
Hirosaki City	Owner and manager of Omori Katsuyama Stone Circle	【Number of personnel engaged in management and conservation of the component part(s)】 1 director, 2 technical staff members, 3 administrative officers, 1 civil engineer (fiscal year appointee)	The Board of Education (Cultural Property Division) is responsible for the preservation and management of the component part.
Hachinohe City	Owner and manager of Korekawa Site	【Number of personnel engaged in management and conservation of the component part(s)】 1 director, 1 deputy director, 6 technical staff members, 2 administrative officers	The Board of Education (Korekawa Archaeological Institution) is responsible for the preservation and management of the component part.

#### 4 Special note in FY2024

Jomon sites World Heritage Headquarters		• In addition to the survey of Japanese visitors, the visitor trend survey also included a survey of international visitors.
Hokkaido		None
Aomori Prefecture		• On 26 April 2024, “Aomori Jomon Station JOMOJOMO,” an information hub for Aomori Prefecture's Jomon sites, opened its doors. • On 23 September 2024, a ceremony was held to celebrate the 100,000th visitor to “Aomori Jomon Station JOMOJOMO.”
Iwate Prefecture		None
Akita Prefecture		None
001	Odai Yamamoto Site	• On 26 April 2024, the “Odai Yamamoto Jomon Museum: Mu-monkan” opened.
002	Kakinoshima Site	None
003	Kitakogane Site	None
004	Tagoyano Site	• The basic design for the improvement and utilization of the Historic Site was completed in March 2025. • In December 2024, a consortium comprising GPI, JERA and Tohoku Electric Power was selected as the operator for the Aomori Prefecture Sea of Japan (southern side) offshore wind power project.
005	Futatsumori Site	• An open-air firing area and pit dwellings are being constructed on the grounds of the Futatsumori Shell Midden Museum, and these are scheduled to be used as an ‘Experience Area’ from the 2025 financial year. • The car park at the Futatsumori Shell Midden Museum has been expanded and is used during events.
006	Sannai Maruyama Site	• On 5 November 2024, a ceremony was held to mark the Sannai Maruyama Site reaching 9.5 million visitors. • On 28 March 2025, the Aomori Prefecture Ordinance on the Coexistence of Nature, Local Communities and Renewable Energy was promulgated, designating the Special Historic Site area, property area and buffer zone of the Sannai Maruyama Site as a ‘Protected Area’ (an area where facilities for converting renewable energy into electricity cannot be installed). The ordinance came into force on 1 July 2025.
007	Ofune Site	• A ‘Plan for the Preservation and Utilization of the Ofune Site’ has been formulated.
008	Goshono Site	• Since its opening in 2002, Gosono Jomon Park, including the Goshono Jomon Museum, has been managed and operated by Ichinohe Town. For the three-year period from 2021 to 2023, management and operation were carried out by the Ichinohe Culture and Arts NPO, a specified non-profit organisation designated by Ichinohe Town, and from 2024 onwards, management and operation returned to direct administration by Ichinohe Town.
009	Irie Site	None
010	Komakino Stone Circle	None
011	Isedotai Stone Circles	• In accordance with the ‘Basic Plan for the Second Phase of Improvement and Utilization of the Isedotai Stone Circles’, formulated in November 2023, paving works on the pedestrian paths were carried out between August 2024 and March 2025. • Prior to the works, permission from the national government to alter the site’s current state was obtained in July. The paving works are scheduled to be carried out over a two-year period up to the 2025 financial year, and permission for the alteration of the site’s current state has also been granted for a two-year period.
012	Oyu Stone Circles	None
013	Kiusu Earthwork Burial Circles	• As part of the improvement and utilization project for the Kiusu Earthwork Burial Circles, a section of the pedestrian paths and access roads (within the component parts and buffer zone), as well as an Interpretation facility (in the buffer zone), have been constructed (scheduled to open in the 2025 financial year).
014	Omori Katsuyama Stone Circle	None
015	Takasago Burial Site	None
016	Kamegaoka Burial Site	• The basic design for the improvement and utilization of the Historic Site was completed in March 2025. • In December 2024, a consortium comprising GPI, JERA and Tohoku Electric Power was selected as the operator for the Aomori Prefecture Sea of Japan (southern side) offshore wind power project.
017	Korekawa Site	• On 2 April 2024, a magnitude 6.0 earthquake occurred with its origin in the northern coastal region of Iwate Prefecture. The seismic intensity in Hachinohe City was 5-lower. While there was no impact on the component part, damage was sustained to one Important Cultural Property housed in the Interpretation facility, as well as to facility equipment and other infrastructure.

## 5 Summary

### 5.1 Indicators concerning the Outstanding Universal Value, integrity, and authenticity of the property.

- No negative impact on the value and attributes of the property has been identified or foreseen.

### 5.2 Indicators concerning the protection and management of the component parts.

- The number of permitted alterations to the existing state at the component parts has increased to 41, from 34 in FY2023, mainly for the purposes of protection and presentation of Historic Sites and without any acts having negative impact on the value of the component parts.
  - Two instances of damage occurred at the Oyu Stone Circles and one at the Kiusu Earthwork Burial Circles, but there was no impact on the underground archaeological remains.
- The number of heritage impact assessments of activities within the component parts (i.e., the number of deliberations to decide on whether or not detailed analysis should be carried out) has increased to 44, from 40 in FY2023, however there is no evidence of any conduct that would adversely affect the value of the property.
- Although there is an increase in temperature and frequency of heavy rainfall in the long term, the environment and vegetation surrounding the component parts, such as temperature, humidity, precipitation and groundwater levels, have not changed significantly compared to FY2023. No negative impact of natural disasters on component parts has been identified or foreseen, although some damage due to heavy rain has been observed.
- The number of specialist staff responsible for research and study, etc. on the component parts of the World Heritage List remain at 66, unchanged from the 2023 financial year, ensuring that the research and investigation framework is maintained.

### 5.3 Indicators concerning the factors that affect the property.

- The total number of applications that have been submitted to request permissions of private sector development projects in the buffer zone has increased to 40, from 21 in FY2023. All regulatory approval procedures required by law have been carried out properly, and there are no actions that could adversely affect the value of the property.
- The number of heritage impact assessments of activities in and around the buffer zone (i.e., the number of deliberations to decide on whether or not detailed analysis should be carried out) has decreased to 46, from 55 in FY2023. There have been no development activities that would have negative impact on the value of the property.
- There has been no air pollution, vegetation change, and natural disasters that would significantly affect the value of the component parts.
- The number of visitors to the component parts was approximately 411,000, a decrease compared to the approximately 431,000 recorded in the 2023 financial year. Whilst visitor numbers have increased at some component parts, they have fallen at the majority of them.
- The number of information boards (signs) that guide visitors to the component parts has increased to 394, which is around 5.3% increase as compared to 374 in FY2023.

### 5.4 Indicators concerning the transmission of the Outstanding Universal Value.

- The number of participants in workshops and other events on property significantly increased to approximately 332,000 compared with approximately 202,000, in FY2023. Training workshops and other events are actively organized by local authorities and local residents.
- The number of accesses to the website was approximately 2.69 million, a significant decrease compared to 3.35 million in FY2023. The number of website updates has also fallen to 4,150, down from 4,356 in the 2023 financial year, and there is a need to actively disseminate information via digital media.
- Although the number of members of private organizations involved in the preservation and utilization of component parts stands at 2,278 (1,063 individuals and 1,215 organizations)—a decrease from the 2,310 recorded in the 2023 financial year (1,107 individuals and 1,203 organizations)—the active involvement of local residents in the preservation and utilization of component parts remains strong.